

670 MHz < Fo < 1000 MHz

Band Pass

Slopes 10 MHz

Bandwidth 30 MHz

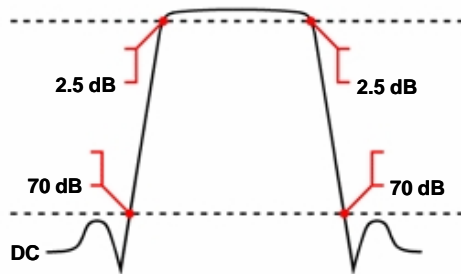
WBCGV12-___

Attenuation 70 dB

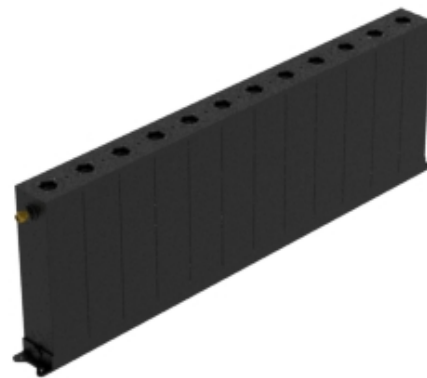
Specifications

Passband:	___ (Fo) ± 15 MHz = ___ to ___ MHz
Passband Insertion Loss:	1.5 dB max. at Fo (2.5 dB max. at corners)
Passband Return Loss:	14 dB min. (VSWR 1.5:1 max.)
Stopband:	DC to ___ MHz and ___ to ___ MHz
Stopband Attenuation:	70 dB min.
Operating Temperature:	15 °C to 45 °C
Power Handling:	will be quoted (<i>Please see our warranty in this regard</i>)
Dimensions (L x W x H):	max. 365 x 30 x 125 mm (plus connectors and flanges)
Approx. Weight:	2.15 kg
Mounting Provision:	10 mm flanges on both ends with 3.3 mm holes
Connector 1:	- Please choose -
Connector 2:	- Please choose -

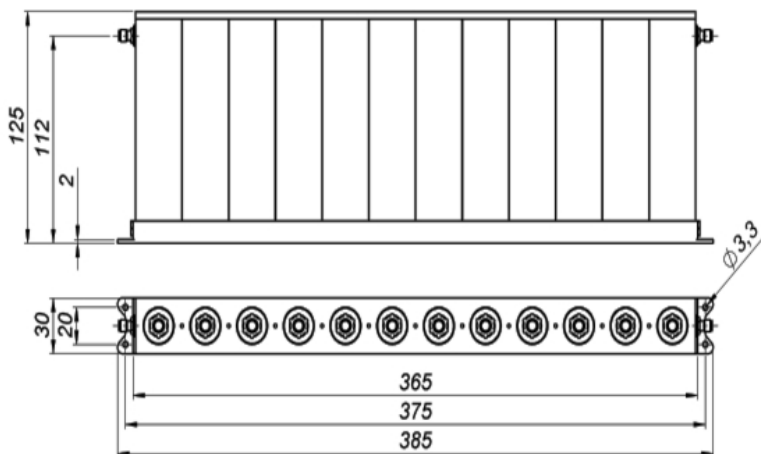
Typical Performance



12 Section Cavity Design



©2013 Wainwright Instruments. All rights reserved.



Connector Options

- SMA Female
- SMA Male
- N Female
- N Male
- BNC Female
- BNC Male

Euro Prices

(USD Prices will be quoted for US-based customers only)

1 - 4 pcs:	€ 1458
5 - 9 pcs:	€ 1349
10 - 24 pcs:	€ 1248

Delivery Terms

FCA Andechs (free carrier) according to **Incoterms 2010**
 In Deutschland liefern wir frachtfrei gemäß CPT **Incoterms 2010** (unversichert).
 Regarding payment terms and warranty see [Terms and Conditions](#).
Delivery time: normally 3 to 4 weeks - depending on quantity ordered and on our work load.

Customer is responsible for observing all applicable export laws in regard to filter application and location of end user



Wainwright Instruments GmbH
 www.wainwright-filters.com

Tel: +49 8152 918230
 Fax: +49 8152 918255
 info@wainwright-filters.com