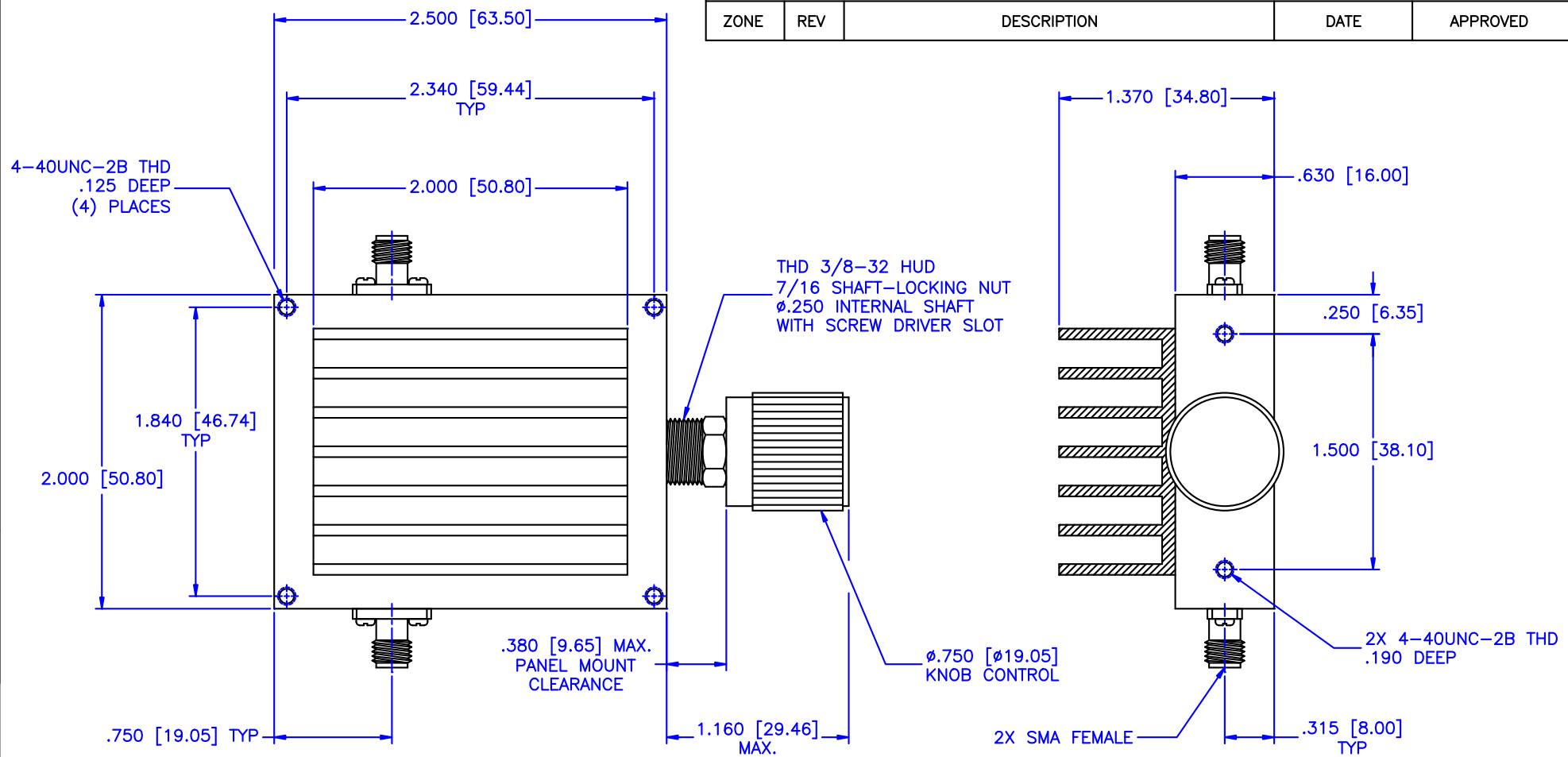


REVISIONS				
ZONE	REV	DESCRIPTION	DATE	APPROVED



SPECIFICATION

Frequency Range: 0.5-1.5 GHz
 Attenuation: 6dB
 Insertion Loss: 0.5 Max.
 VSWR: 1.50:1 Max.
 RF Power: 50W Average, 5kW Peak

MATERIAL:		MCLI MICROWAVE COMMUNICATIONS LABORATORIES INC. 7255 30TH AVE. N. SAINT PETERSBURG, FL 33710 TEL: (727) 344-6254 FAX: (727) 381-6116 http://WWW.MCLI.COM	SCALE:	N/A
			SHEET:	N/A
DRAWN:		UNLESS OTHERWISE SPECIFIED: TOLERANCES IN (INCHES) OR [mm] (MILLIMETERS) FRACTIONS: ± 1/64 DECIMALS: ± .015 ANGLE: ± 1/2°	DRAWING TITLE: CONTINUOUSLY VARIABLE ATTENUATOR, HIGH POWER	
DATE:		PROPRIETARY NOTICE: THE INFORMATION IN THIS DRAWING IS PROPRIETARY AND SHALL NOT BE USED OR DISCLOSED WITHOUT WRITTEN PERMISSION FROM MICROWAVE COMMUNICATIONS LABORATORIES INC. (MCLI)	PART NO. HA50-1-6	
DRAWN: Paiboon Luekhamhan		DATE: 02-10-2011	CAGE CODE: 0D2L5	SIZE: A
APPROVED: T. Nguyen		DATE: 02-10-2011	REV: N/A	DWG NO. 85490
		THIRD ANGLE PROJECTION	DO NOT SCALE THE DRAWING	