



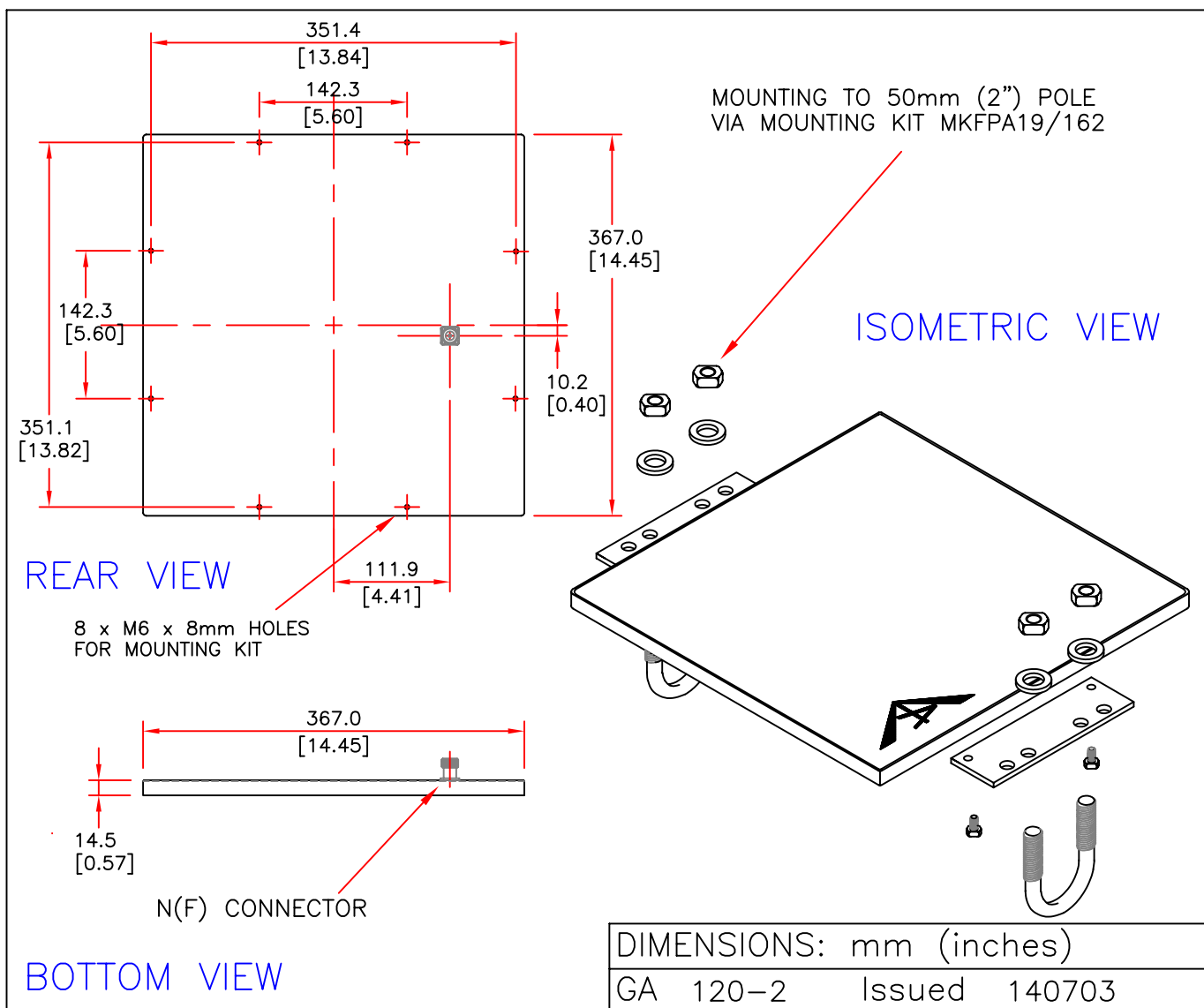
EUROPEAN ANTENNAS



FLAT PANEL ANTENNA

MODEL: FPA19-25R/120

FREQUENCY: 2.40 – 2.70 GHz	GAIN: 19 dBi
POLARISATION: RH Circular	BEAMWIDTH: 18° x 18°
AXIAL RATIO: 2 – 3 dB (Typical)	VSWR: 1.5:1(max) into 50 Ohms
POWER RATING: 20 W	FRONT TO BACK: 30 dB
TEMPERATURE: -20°C to +50°C	MASS: 2 Kg
FINISH: White Gloss/Plated Al.	WIND LOADING: 21.9Kg/48.1lbs @100mph



EUROPEAN ANTENNAS LTD.

TEL: +44 (0)1638 731888

LAMBDA HOUSE, CHEVELEY,
NEWMARKET, SUFFOLK, CB8 9RG,
UNITED KINGDOM

FAX: +44 (0)1638 721999

European Antennas Ltd has a policy of continuous development and therefore stress that the data contained on this sheet should be used for guidance only.