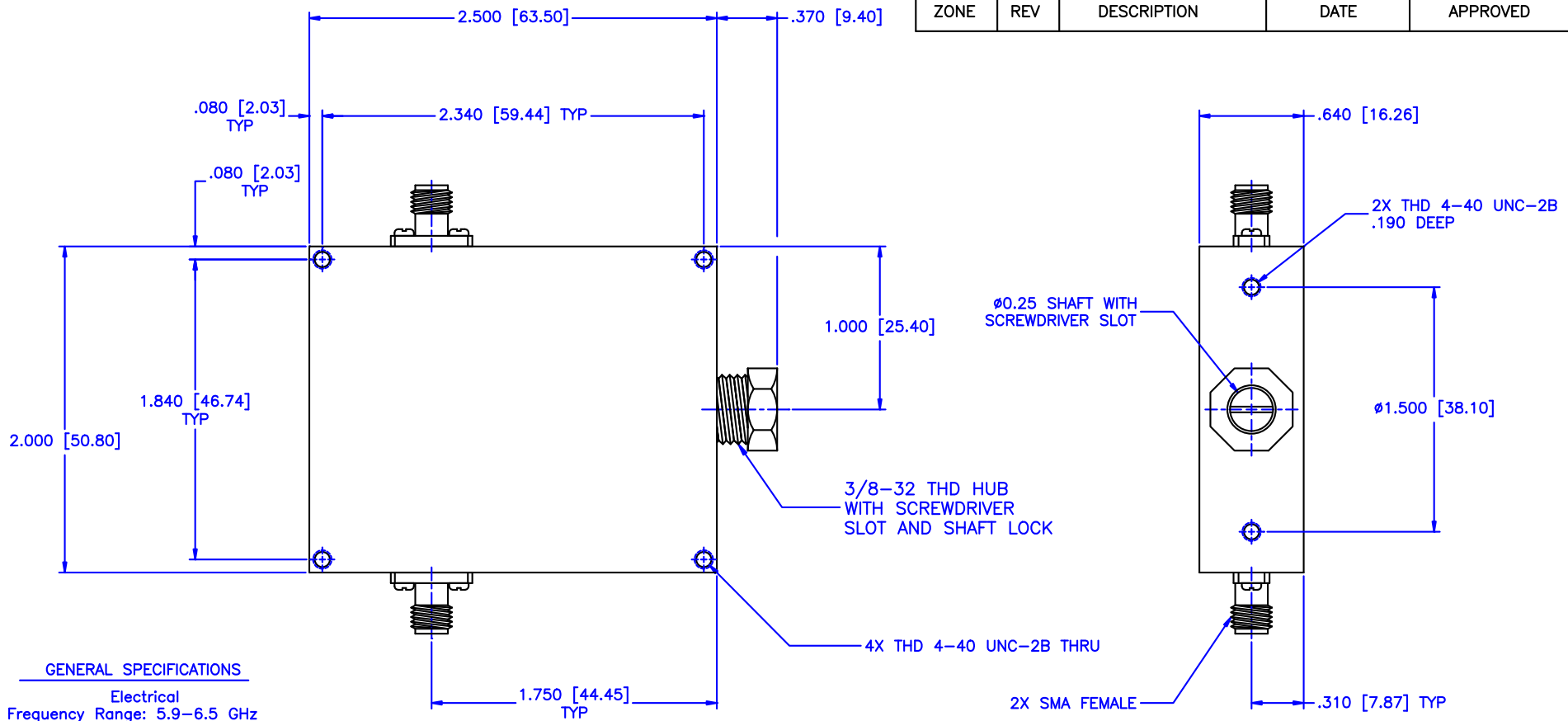


REVISIONS				
ZONE	REV	DESCRIPTION	DATE	APPROVED



**GENERAL SPECIFICATIONS**

**Electrical**  
 Frequency Range: 5.9-6.5 GHz  
 Attenuation: 20dB  
 Flatness: ±0.5dB  
 VSWR: 1.50:1 Max.  
 Insertion Loss per Frequency Band  
 to 18 GHz: 0.5dB max.  
 to 26 GHz: 0.75dB max.  
 to 40 GHz: 1.50dB max.  
 RF Power: 7W average, 3kW peak

**Mechanical**  
 Body: Aluminum  
 Connectors: Stainless Steel  
 Finish: Unique corrosion resistant 316 stainless steel epoxy coating IAW MIL-F-14072  
 Weight: 5.2oz / 150gm

**Environmental**  
 Operating Temperature: -55°C to +110 °C  
 Shock: 15 G's, 11ms, 1/2 sine  
 Vibration: 3 G's overall  
 Altitude: 40,000ft. Survival 25,000ft Operating

MATERIAL:			MICROWAVE COMMUNICATIONS LABORATORIES INC. 7255 30TH AVE. N. SAINT PETERSBURG, FL 33710 TEL: (727) 344-6254 FAX: (727) 381-6116 http://WWW.MCLI.COM		SCALE:	N/A
			UNLESS OTHERWISE SPECIFIED: TOLERANCES IN (INCHES) OR [mm] (MILLIMETERS) FRACTIONS: ± 1/64 DECIMALS: ±.01 ±.005 ANGLE: ±1/2°	DRAWING TITLE:		SHEET:
			CONTINUOUSLY VARIABLE ATTENUATOR			
			PART NO.		CA4-20	
DRAWN:	DATE:	PROPRIETARY NOTICE: THE INFORMATION IN THIS DRAWING IS PROPRIETARY AND SHALL NOT BE USED OR DISCLOSED WITHOUT WRITTEN PERMISSION FROM MICROWAVE COMMUNICATIONS LABORATORIES INC. (MCLI)	CAGE CODE:	SIZE:	REV:	DWG NO.
APPROVED:	DATE:		0D2L5	A	N/A	80638
		THIRD ANGLE PROJECTION	DO NOT SCALE THE DRAWING			