

Model 1568 & 1568-1 Precision Coaxial Panel Adapters

dc to 26.5 GHz

Ruggedized SMA Connectors (female to female)



Features

- /// **High Repeatability.**
- /// **Rugged Injection Molded Connectors.**
- /// **Bulkhead Mounting** - Conveniently mounts on any panel using a D-hole shown below. Extra heavy construction for long life even with mistreatment makes this adapter suitable for instrument and subsystem front panel applications.

Specifications

NOMINAL IMPEDANCE: 50 Ω

FREQUENCY RANGE: dc to 26.5 GHz

MAXIMUM SWR:

Frequency (GHz)	SWR
dc - 18	1.15
18 - 26.5	1.20

INSERTION LOSS & REPEATABILITY (dB):

Frequency (GHz)	Ins Loss	Repeatability
dc - 12.4	< 0.30	0.01
12.4 - 18	< 0.40	0.02
18.0 to 26.5	< 0.50	0.02

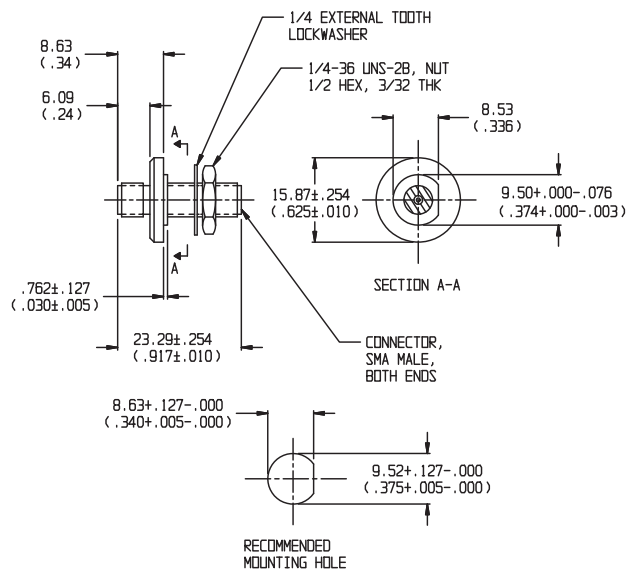
TEMPERATURE RANGE: -55°C to +100°C

CONSTRUCTION: Inner and outer conductors: heat treated beryllium copper, gold plated. Mounting hardware provided (Hex nut and lockwasher) Add -1 to model number for the optional stainless steel body.

CONNECTORS: SMA connectors per MIL-STD-348 interface dimensions - mate nondestructively with MIL-C-39012 connectors.

WEIGHT: 56.7 g (2 oz) maximum

PHYSICAL DIMENSIONS:



NOTE: All dimensions are given in mm (inches) and are maximum, unless otherwise specified.