

Low Pass Filter

PLP-70-75+

75Ω DC to 60 MHz



CASE STYLE: A01
PRICE: \$15.20 ea. QTY (1-9)

Maximum Ratings

Operating Temperature	-55°C to 100°C
Storage Temperature	-55°C to 100°C
RF Power Input	0.5W max.
Permanent damage may occur if any of these limits are exceeded.	

Pin Connections

INPUT	1
OUTPUT	8
GROUND	2,3,4,5,6,7
CASE GROUND	2,3,4,5,6,7

Features

- rugged welded case, hermetic
- other standard and custom PLP models available with wide selection of fco

Application

- test equipment
- lab use
- transmitters / receivers
- military / hi-rel applications

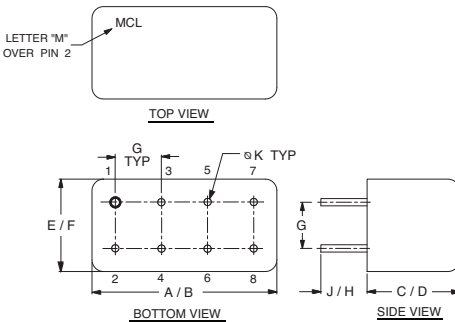
+RoHS Compliant

The +Suffix identifies RoHS Compliance. See our web site for RoHS Compliance methodologies and qualifications

Low Pass Filter Electrical Specifications

PASSBAND (MHz)	fco, MHz Nom.	STOPBAND (MHz)		VSWR (:1)	
		(Loss > 20dB)	(Loss > 40dB)	Passband Typ.	Stopband Typ.
DC - 60	67	90 - 117	117 - 300	1.7	18

Outline Drawing

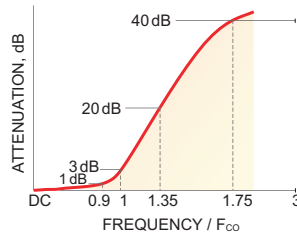


Outline Dimensions (inch/mm)

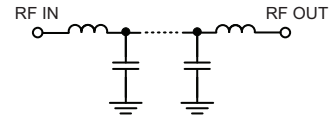
A	B	C	D	E	F
.770	.800	.385	.400	.370	.400
19.56	20.32	9.78	10.16	9.40	10.16

G	H	J	K	wt
.200	.20	.14	.031	grams
5.08	5.08	3.56	0.79	5.2

typical frequency response

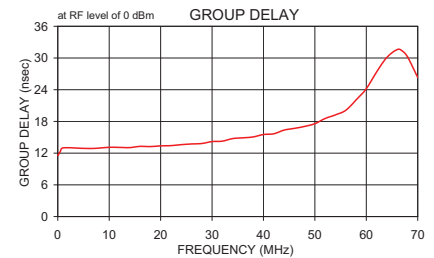
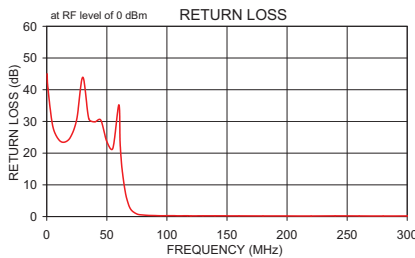
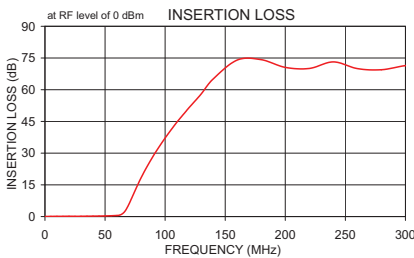


functional schematic



Typical Performance Data

Frequency (MHz)	Insertion Loss (dB)		Return Loss (dB)	Frequency (MHz)	Group Delay (nsec)
	\bar{x}	σ			
0.3	0.03	0.01	45.0	0.03	11.61
20.0	0.14	0.01	25.2	0.10	11.65
30.0	0.15	0.02	43.9	0.50	12.30
40.0	0.21	0.01	29.9	1.00	13.01
50.0	0.30	0.04	23.7	5.00	12.91
60.0	0.51	0.01	35.2	10.00	13.10
65.0	1.57	0.07	8.6	14.00	13.05
67.0	2.88	0.12	5.1	18.00	13.25
70.0	5.97	0.25	2.3	20.00	13.38
73.0	9.70	0.38	1.2	24.00	13.60
78.0	15.96	0.49	0.6	28.00	13.83
90.0	28.56	0.59	0.3	30.00	14.18
100.0	37.15	0.60	0.3	34.00	14.75
117.0	49.54	0.82	0.3	40.00	15.52
130.0	57.97	1.05	0.3	44.00	16.36
150.0	72.42	5.81	0.2	50.00	17.58
200.0	70.56	4.01	0.2	54.00	19.24
230.0	72.86	4.55	0.2	60.00	24.20
250.0	71.15	4.01	0.2	64.00	30.11
280.0	69.45	3.26	0.2	67.00	31.33
300.0	71.40	3.31	0.2	70.00	26.32



For detailed performance specs & shopping online see web site

P.O. Box 350166, Brooklyn, New York 11235-0003 (718) 934-4500 Fax (718) 332-4661 The Design Engineers Search Engine Provides ACTUAL Data Instantly at minicircuits.com

Notes: 1. Performance and quality attributes and conditions not expressly stated in this specification sheet are intended to be excluded and do not form a part of this specification sheet. 2. Electrical specifications and performance data contained herein are based on Mini-Circuit's applicable established test performance criteria and measurement instructions. 3. The parts covered by this specification sheet are subject to Mini-Circuits standard limited warranty and terms and conditions (collectively, "Standard Terms"); Purchasers of this part are entitled to the rights and benefits contained therein. For a full statement of the Standard Terms and the exclusive rights and remedies thereunder, please visit Mini-Circuits' website at www.minicircuits.com/MCLStore/terms.jsp.

REV. OR
M108739
EDR-7645/1U
PLP-70-75+
URJ/RAV
121015
Page 1 of 1