

Low Pass Filter

LPF-B0R6+

50Ω DC to 0.6 MHz

Maximum Ratings

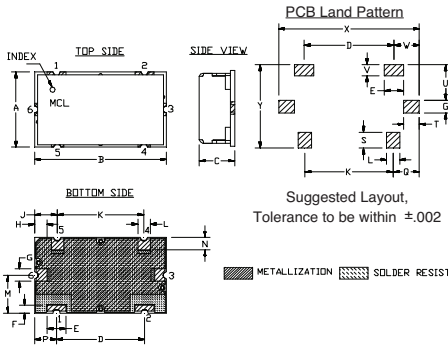
Operating Temperature	-40°C to 85°C
Storage Temperature	-55°C to 100°C
RF Power Input	0.25W Max

Permanent damage may occur if any of these limits are exceeded.

Pin Connections

INPUT	1
OUTPUT	2
GROUND	3, 4, 5, 6

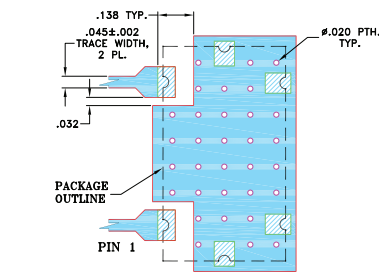
Outline Drawing



Outline Dimensions (inch mm)

A	B	C	D	E	F	G	H	J	K	L	M
.472"	.826"	.220"	.561"	.118"	.047"	.078"	.076"	.142"	.543"	.078"	.236"
11.99	20.98	5.59	14.00	3.00	1.19	1.98	1.92	3.61	13.79	1.98	5.99
N	P	Q	S	T	U	V	W	X	Y	wt	
.079"	.138"	.162"	.098"	.096"	.217"	.067"	.157"	.866"	.512"	grams	
2.01	3.51	4.11	2.49	2.44	5.51	1.70	3.99	22.00	13.00	6.0	

Demo Board MCL P/N: TB-400+ Suggested PCB Layout (PL-247)

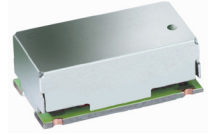


Features

- high rejection
- good VSWR, 1.2:1 typ. @ passband
- shielded case
- aqueous washable

Applications

- CDMA
- cellular infrastructure
- wireless communications
- receivers / transmitters



CASE STYLE: HZ1198
PRICE: \$9.35 ea. QTY (1-9)

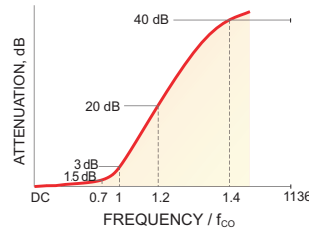
+ RoHS compliant in accordance with EU Directive (2002/95/EC)

The +Suffix has been added in order to identify RoHS Compliance. See our web site for RoHS Compliance methodologies and qualifications.

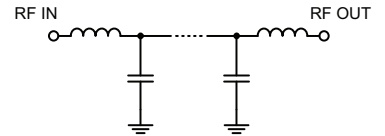
Low Pass Filter Electrical Specifications (T_{AMB} = 25°C)

PASSBAND (MHz)	f _{co} , MHz Nom.	STOPBAND (MHz)		VSWR (:1)	
		(Loss > 20dB)	(Loss > 40dB)	Passband Typ.	Stopband Typ.
DC - 0.6	0.88	1.08 - 1.23	1.23 - 1000	1.2	20

Typical Frequency Response

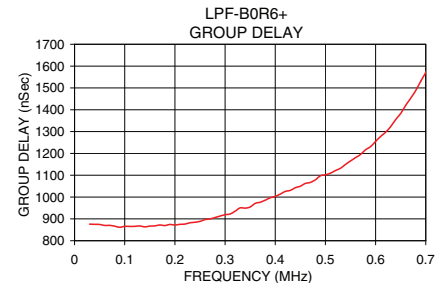
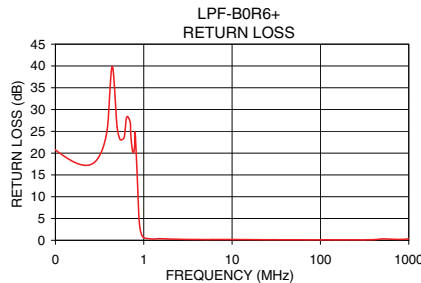
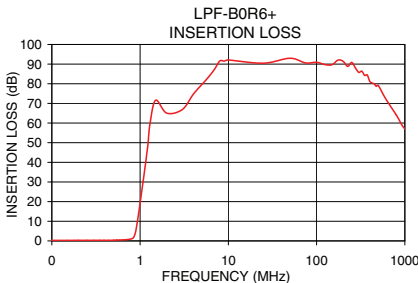


Functional Schematic



Typical Performance Data at 25°C

Frequency (MHz)	Insertion Loss (dB)		Return Loss (dB)	Frequency (MHz)	Group Delay (nSec.)
	\bar{x}	σ			
0.03	0.23	0.02	28.54	0.03	876.11
0.10	0.26	0.01	20.75	0.05	874.48
0.30	0.31	0.01	18.68	0.10	865.80
0.50	0.38	0.02	25.91	0.20	872.14
0.60	0.49	0.02	23.62	0.25	888.36
0.76	0.85	0.04	20.08	0.28	906.52
0.84	1.63	0.19	15.80	0.30	919.11
0.88	3.73	0.60	5.57	0.34	949.41
0.91	6.91	0.85	2.61	0.36	971.15
0.96	13.72	0.98	0.99	0.40	1002.90
1.04	24.76	0.98	0.50	0.44	1042.92
1.08	30.00	1.00	0.43	0.48	1079.05
1.23	49.62	1.30	0.32	0.52	1121.51
5.00	79.57	2.45	0.17	0.55	1165.29
10.00	92.09	3.23	0.18	0.58	1216.64
100.00	90.93	2.58	0.11	0.60	1254.93
500.00	79.12	5.12	0.33	0.65	1383.05
1000.00	57.11	3.23	0.41	0.70	1571.05



For detailed performance specs & shopping online see web site

P.O. Box 350166, Brooklyn, New York 11235-0003 (718) 934-4500 Fax (718) 332-4661 The Design Engineers Search Engine Provides ACTUAL Data Instantly at minicircuits.com

Notes: 1. Performance and quality attributes and conditions not expressly stated in this specification sheet are intended to be excluded and do not form a part of this specification sheet. 2. Electrical specifications and performance data contained herein are based on Mini-Circuit's applicable established test performance criteria and measurement instructions. 3. The parts covered by this specification sheet are subject to Mini-Circuits standard limited warranty and terms and conditions (collectively, "Standard Terms"); Purchasers of this part are entitled to the rights and benefits contained therein. For a full statement of the Standard Terms and the exclusive rights and remedies thereunder, please visit Mini-Circuits' website at www.minicircuits.com/MCLStore/terms.jsp.

REV. OR
M119635
EDR-9418U
LPF-B0R6+
URJ/RAV
110818
Page 1 of 1