

HJ-59001 16-WAY 0° POWER DIVIDERS

TECHNICAL FEATURE

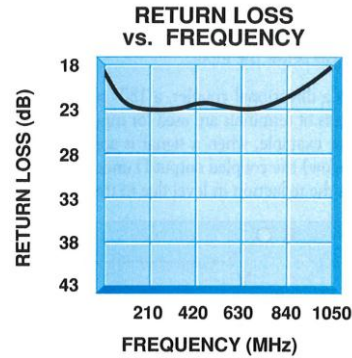
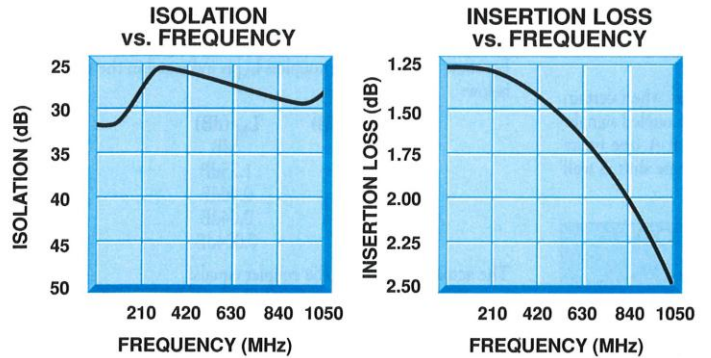
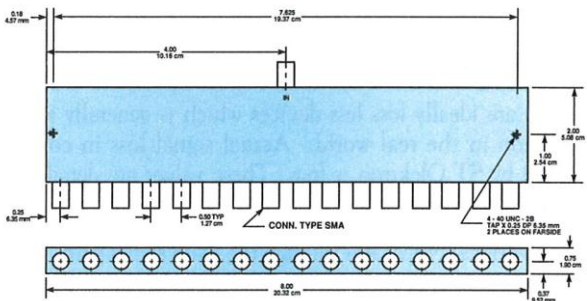
FEATURES

- 20 to 1000 MHz

PERFORMANCE

Frequency Range.....	20 - 1000 MHz
Isolation.....	25 dB min
Insertion Loss	2.5 dB max
VSWR.....	1.5:1 max
Phase Balance	±5° max
Amplitude Balance	±0.3 dB max
Impedance.....	50 Ohms
Power Handling	3 Watts max
Operating Temperature Range.....	-54 to +85° C

MECHANICAL OUTLINE



FUNCTIONAL SCHEMATIC

