



Surface Mount LVC MOS Clock Oscillator Series

CONNOR WINFIELD



2111 Comprehensive Drive
Aurora, Illinois 60505
Phone: 630-851-4722
Fax: 630-851-5040
www.conwin.com
US Headquarters:
630-851-4722
European Headquarters:
+353-61-472221

Description:

The Connor Winfield Xxxx - Series is a 5.0x7.0mm Surface Mount, LVC MOS, Fixed Frequency Crystal Controlled Oscillator (XO) designed for applications requiring tight frequency stability, wide temperature range and low jitter. Operating at 2.5V or 3.3V supply voltage, the Xxxx - Series provides an LVC MOS Output with enable / disable function. The surface mount package is designed for high-density mounting and is optimum for mass production.



Features:

Model Xxxx - Series

5.0 x7.0mm Surface Mount Package
2.5V or 3.3V Operation
LVC MOS Output Logic
Frequency Stabilities Available:
X14x / X24x / X34x / X44x: +/-20ppm
X11x / X21x / X31x / X41x: +/-25ppm
X12x / X22x / X32x / X42x: +/-50ppm
X13x / X23x / X33x / X43x: +/-100ppm
Temperature Ranges Available:
X1xx Series: 0 to 70°C
X2xx Series: -40 to 85°C
X3xx Series: 0 to 85°C
X4xx Series: -20 to 70°C
Low Jitter <0.2 ps RMS
Tri-State Enable/Disable
Tape and Reel Packaging RoHS
RoHS Compliant / Lead (Pb) Free

Absolute Maximum Ratings

Parameter	Minimum	Nominal	Maximum	Units	Notes
Storage Temperature	-55	-	125	°C	
Supply Voltage (Vcc)	-0.5	-	5.0	Vdc	
Input Voltage (OE)	-0.5	-	Vcc + 0.5	Vdc	

Absolute Ratings: Stresses beyond those listed under "absolute maximum ratings" may cause permanent damage to the device. These are stress ratings only. The functional operation of the device at those or any other conditions beyond those indicated under "recommended operating conditions" is not implied. Exposure to conditions outside the "recommended operating conditions" for any extended period of time may adversely impact device reliability and result in failures not covered by warranty.

Operating Specifications

Parameter	Minimum	Nominal	Maximum	Units	Notes
Output Frequency (Fo)					
Models Xx4x, Xx1x Series	20	-	200	MHz	1
Models Xx2x, Xx3x Series	20	-	225	MHz	
Total Frequency Tolerance	(See Ordering Information or Model Matrix for full part number, page 3)				
Model Xx4x	-20	-	20	ppm	2
Model Xx1x	-25	-	25	ppm	2
Model Xx2x	-50	-	50	ppm	2
Model Xx3x	-100	-	100	ppm	2
Operating Temperature Range					
Model X1xx	0	-	70	°C	
Model X2xx	-40	-	85	°C	
Model X3xx	0	-	85	°C	
Model X4xx	-20	-	70	°C	
Supply Voltage (Vcc)					
Model Xxx2,	2.375	2.5	2.625	Vdc	
Model Xxx3	3.135	3.3	3.465	Vdc	
Supply Current (Icc)					
40 to 79.999 MHz	-	-	15	mA	
80 to 89.999 MHz	-	-	26	mA	
90 to 124.999 MHz	-	-	36	mA	
125 to 164.999 MHz	-	-	46	mA	
165 to 225 MHz	-	-	61	mA	
Jitter:					
Period Jitter	-	3.0	5.0	ps RMS	
Integrated Phase Jitter (BW = 12 KHz to 20 MHz)					
Fo = 156.25 MHz	-	0.15	0.20	ps RMS	
Jitter Peak to Peak (BW = 10 Hz to 20 MHz)	-	-	25	ps RMS	
SSB Phase Noise (Fo = 156.25 MHz)					
@ 10 Hz offset	-	-60	-	dBc/Hz	
@ 100 Hz offset	-	-90	-	dBc/Hz	
@ 1 KHz offset	-	-120	-	dBc/Hz	
@ 10 KHz offset	-	-135	-	dBc/Hz	
@ 100 KHz offset	-	-142	-	dBc/Hz	
@ 1 MHz offset	-	-148	-	dBc/Hz	
@ 10 MHz offset	-	-154	-	dBc/Hz	
Start-Up Time	-	-	-	2	ms

Specifications subject to change without notification. See Connor-Winfield's website for latest revision. Not intended for life support applications.
All dimensions in inches. © Copyright 2013 The Connor-Winfield Corporation



Bulletin **Sm118**
Page **1 of 4**
Revision **11**
Date **22 Nov 2013**

OE Input Characteristics

Parameter	Minimum	Nominal	Maximum	Units	Notes
Enable Voltage (High) (Vih)	70%Vcc	-	-	Vdc	3
Disable Voltage (Low) (Vil)	-	-	30%Vcc	Vdc	3
Enable Time	-	-	2	ms	
Disable Time	-	-	200	ns	
Output Disable Current (Standby Current) (Icc)	-	-	10	uA	

CMOS Output Characteristics

Parameter	Minimum	Nominal	Maximum	Units	Notes
Load	-	15	-	pF	
3.3 Vdc Models					
Output Voltage: High (Voh)	Vcc-0.4	-	-	V	
Output Voltage: Low (Vol)	-	-	0.4	V	
Output Current: High (Ioh)	-	-8	-	mA	
Output Current: Low (Iol)	-	-	8	mA	
Duty Cycle at 50% of Vcc	45	50	55	%	
Rise / Fall Time: 10% to 90%	-	1	2	ns	

Notes:

- 1) Maximum output frequency for the +/-20 ppm and the +/-25 ppm models is 200 MHz.
- 2) Inclusive of calibration @ 25°C, frequency vs. temperature stability, supply voltage change, load change, shock and vibration, 10 years aging.
- 3) When the oscillator is disabled, the outputs are at High Impedance. Output is enabled with no connection on pad 1.

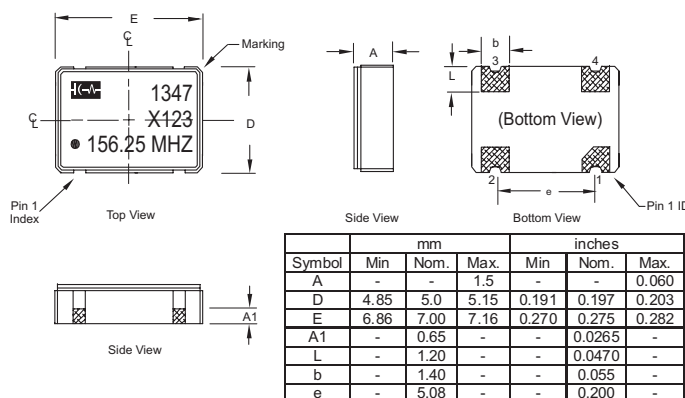
Package Characteristics

Package	Ceramic Surface Mount Package
Moisture Sensitivity Level	MSL-1
Termination Finish	0.7um Gold (Au) over 2.5um Nickel (Ni)

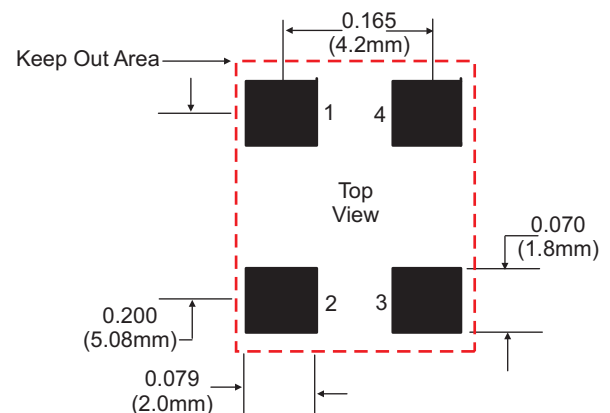
Environmental Characteristics

Shock	500 G's 1ms, Halfsine, 3 shocks per direction, per MIL-STD 202G, Method 213B Test Condition D.
Sinusoidal Vibration	0.06" D.A. or 10G's Peak, 10 to 500 Hz, per MIL-STD-202G, Method 204D, Test Condition A.
Random Vibration	5.35 G's rms. 20 to 2000 Hz per MIL-STD-202G, Method 214, Test Condition 1A, 15 minutes each axis.
Moisture	10 cycles, 95% RH, Per MIL-STD-202G, Method 112.
Marking Permanency	Per MIL-STD-202G, Method 215J.
Solder Process	RoHS compliant, lead free. See solder profile on page 3.

Package Outline



Suggested Pad Layout



Pad Connections

- 1: Enable / Disable (OE)
- 2: Ground (Cover)
- 3: Output
- 4: Supply Voltage (Vcc)

Enable / Disable Function (OE)

Function (Pad 1)
High (Vih) or Open
Low (Vil)

Output
Enabled
Disabled
(High Impedance)

Bulletin	Sm118
Page	2 of 4
Revision	11
Date	22 Nov 2013

Ordering Information

X	1	2	3	- 156.25M
Type LVCMOS Clock Series 5x7 mm	Temperature Range 1 = 0 to 70°C 2 = -40 to 85°C 3 = 0 to 85°C 4 = -20 to 70°C	Frequency Stability 4 = ±20 ppm 1 = ±25 ppm 2 = ±50 ppm 3 = ±100 ppm	Supply Voltage 2 = 2.5 Vdc 3 = 3.3 Vdc	Output Frequency Frequency Format -xxx.xM Min -xxx.xxxxxM Max *Amount of numbers after the decimal point. M = MHz

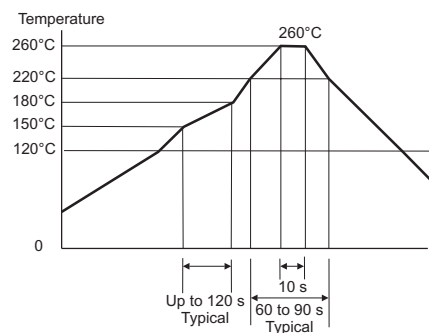
Example Part Numbers:

X123-156.25M = LVCMOS Output, 0 to 70, +/-50 ppm, 3.3 Vdc, E/D Pad 1, Output Frequency 156.25 MHz
X412-100.0M = LVCMOS Output, -20 to 70, +/-25 ppm, 2.5 Vdc, E/D Pad 1, Output Frequency 100.0 MHz

Model Matrix

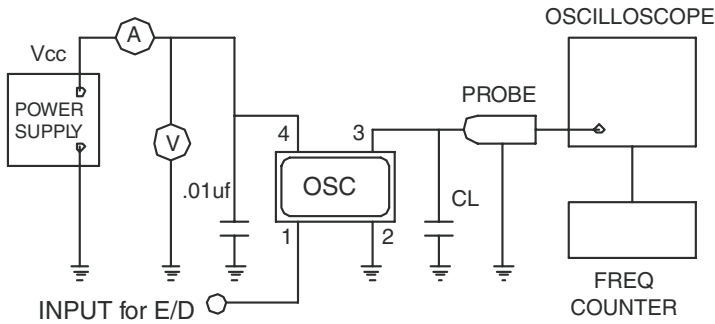
Frequency Tolerance ±20 ppm	Frequency Tolerance ±25 ppm	Frequency Tolerance ±50 ppm	Frequency Tolerance ±100 ppm	Supply Voltage	Temperature Range
X142	X112	X122	X132	2.5Vdc	0 to 70°C
X242	X212	X222	X232	2.5Vdc	-40 to 85°C
X342	X312	X322	X332	2.5Vdc	0 to 85°C
X442	X412	X422	X432	2.5Vdc	-20 to 70°C
X143	X113	X123	X133	3.3Vdc	0 to 70°C
X243	X213	X223	X233	3.3Vdc	-40 to 85°C
X343	X313	X323	X333	3.3Vdc	0 to 85°C
X443	X413	X423	X433	3.3Vdc	-20 to 70°C

Solder Profile

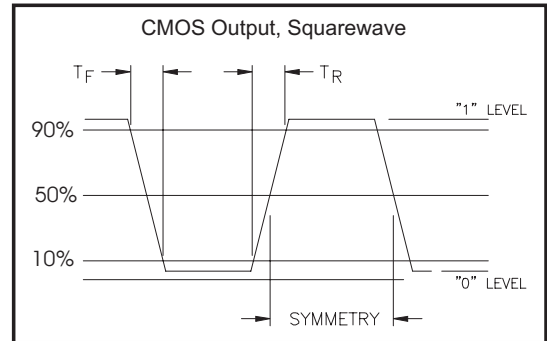


Meets IPC/JEDEC J-STD-020C

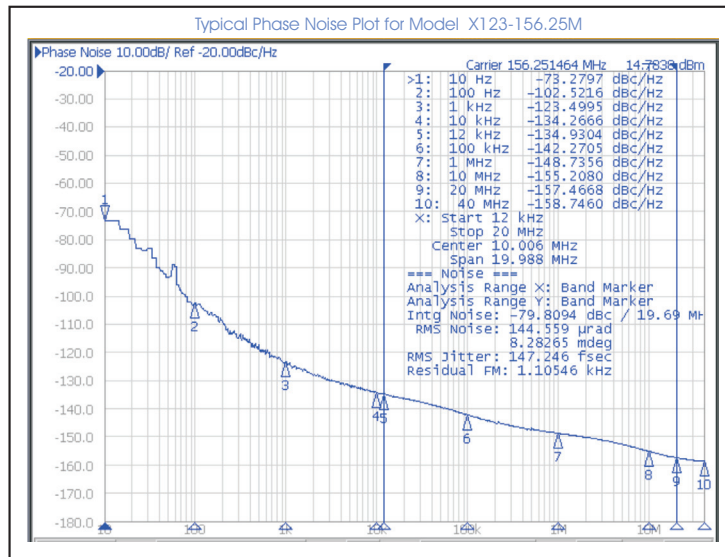
Test Circuit



CMOS Output Waveform



Phase Noise Plot



Tape and Reel Dimensions

