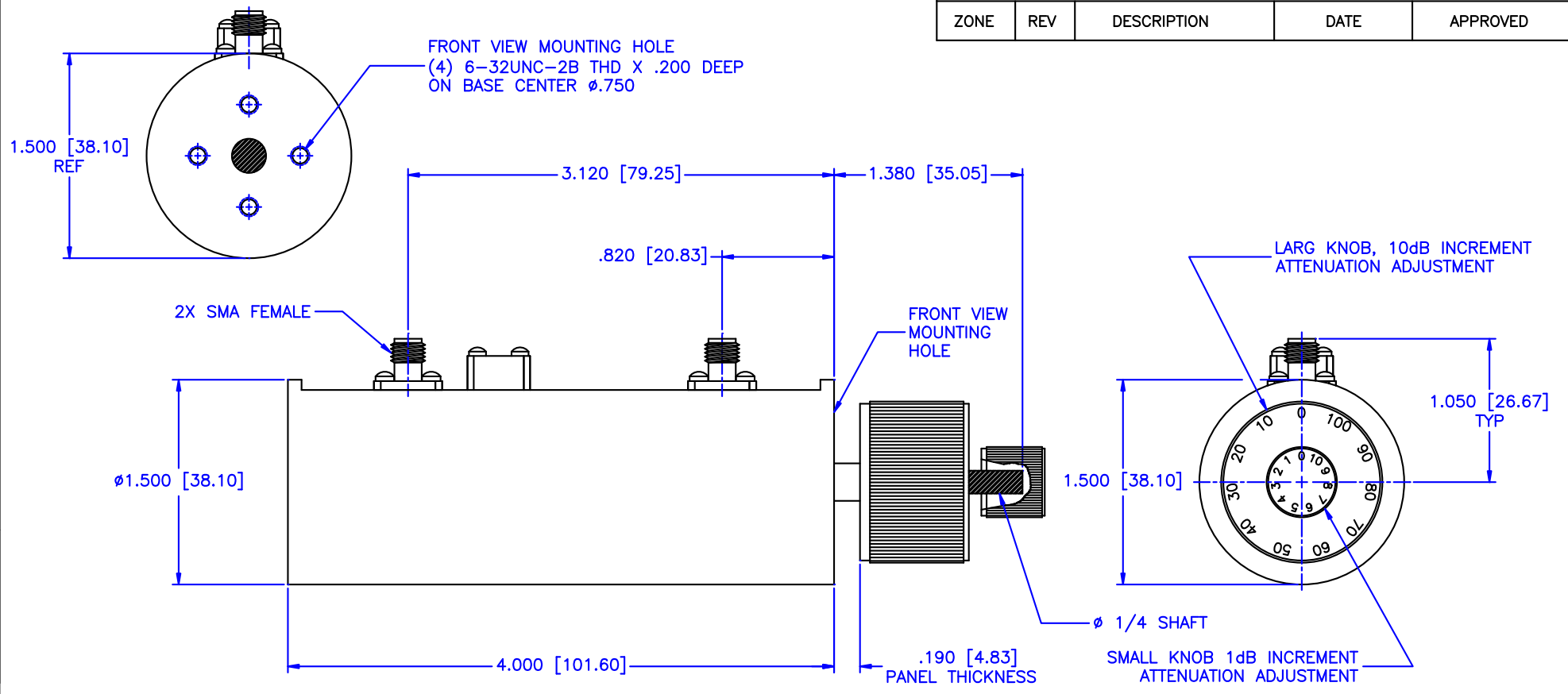


REVISIONS				
ZONE	REV	DESCRIPTION	DATE	APPROVED



Specifications:

Frequency Range: DC-2.5 GHz
 Attenuation Range: 0-50dB (In 1dB Steps)
 Attenuation Accuracy: ±0.4dB or 3%
 Insertion Loss: 1dB Max.
 VSWR: 1.50:1 Max.
 RF Input Power: 2W Average, 1kW Peak

Environmental:

Temperature range: -20°C to +85°C
 Shock: 15 G's, 11mS, 1/2 sine
 Vibration: 3 G's overall
 Altitude: 40,000 ft. Survival 25,000ft Operating

MATERIAL:		MICROWAVE COMMUNICATIONS LABORATORIES INC. 7255 30TH AVE. N. SAINT PETERSBURG, FL 33710 TEL: (727) 344-6254 FAX: (727) 381-6116 http://WWW.MCLI.COM		SCALE:	N/A
		UNLESS OTHERWISE SPECIFIED: TOLERANCES IN (INCHES) OR [mm] (MILLIMETERS) FRACTIONS: ± 1/64 DECIMALS: ±.01 ±.005 ANGLE: ±1/2°		SHEET:	N/A
DRAWN:	DATE:	DRAWING TITLE:		PART NO.	
Pai boon Luekhamhan	02-07-2011	DUAL CONCENTRIC ROTARY STEP ATTENUATOR		CVA26-050/DD	
APPROVED:	DATE:	PROPRIETARY NOTICE:	CAGE CODE:	SIZE:	REV:
T. Nguyen	02-07-2011	THE INFORMATION IN THIS DRAWING IS PROPRIETARY AND SHALL NOT BE USED OR DISCLOSED WITHOUT WRITTEN PERMISSION FROM MICROWAVE COMMUNICATIONS LABORATORIES INC. (MCLI)	OD2L5	A	N/A
THIRD ANGLE PROJECTION		DO NOT SCALE THE DRAWING		DWG NO.	
				85369	