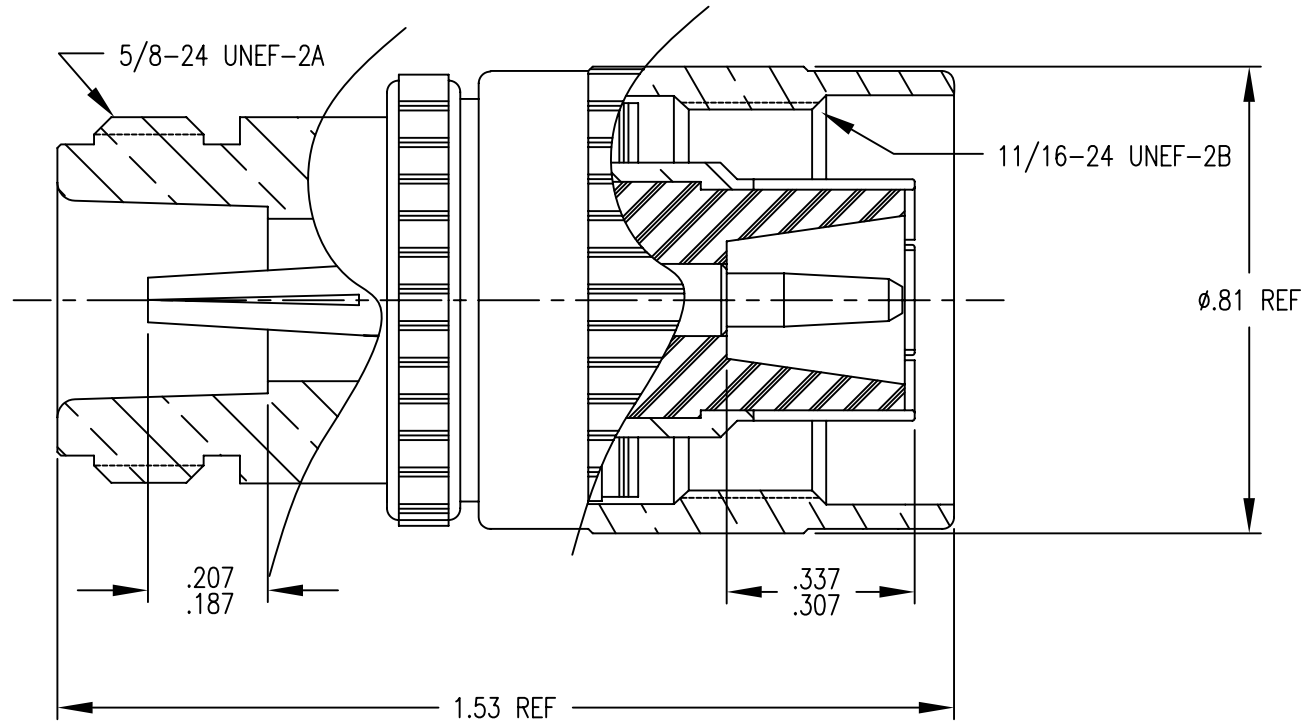


- 1.0 PERFORMANCE
 1.1 FREQUENCY RANGE: DC - 11 GHz
 1.2 VOLTAGE RATING: 1000V RMS (sea level)
 1.3 NOMINAL IMPEDANCE: 50 OHMS
 1.4 DWV: 2500V RMS @ 60Hz (sea level)
 1.4 TEMPERATURE RANGE: -65°C TO +165°C
 2.0 MATERIALS
 2.1 DIELECTRIC: TEFLON, ASTM-D-1710
 2.2 CENTER CONTACT: BeCu ASTM-B-196

- 2.3 LOCKING RING: PHOSPHOR BRONZE, ASTM-B-159, ALLOY 510
 2.4 ALL OTHER METAL PARTS: BRASS, ASTM-B-16
 2.5 GASKET: SILICON RUBBER, ZZ-R-765, GR. 50, RED
 3.0 FINISHES
 3.1 CENTER CONTACT: SILVER PLATED
 3.2 ALL OTHER METAL PARTS: NICKEL PLATED
 4.0 MECHANICAL
 4.1 INTERFACES IN ACCORDANCE WITH MIL-STD-348



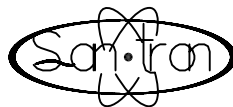
A	ORIGINAL	9/10/02	<input checked="" type="checkbox"/>	<input checked="" type="checkbox"/>	<input checked="" type="checkbox"/>
Rev.	Revisions	Date	Dwn.	Appd.	
	RECOM. STOCK SIZE	FT/M PCS	QTY REQD		

PROPRIETARY
 THIS DRAWING CONTAINS CONFIDENTIAL INFORMATION PROPRIETARY TO SAN*TRON INC. IT MUST NOT BE REPRODUCED OR DISCLOSED TO OTHERS OR USED IN ANY OTHER WAY, IN WHOLE OR PART EXCEPT AS AUTHORIZED IN WRITING BY SAN*TRON INCORPORATED.

REMOVE ALL BURRS AND SHARP EDGES .005 MAX.
 UNLESS OTHERWISE STATED ALL DIMENSIONS ARE IN INCHES AND APPLY AFTER PLATING

UNSPECIFIED TOL.	DWN	FSH	9/10/02
DEC. ± .005	CHKD	FSH	9/10/02
FRAC. ± 1/64	APPR	FSH	9/10/02
ANG. ± 1/2°			

CONCENTRICITY .004 TIR 63/ ✓
 ALL MACHINED SURFACES



SAN • TRON, INC.
 4 NEWBURYPORT TPK, IPSWICH, MA 01938

TITLE ADAPTER N JACK : SC PLUG

MATERIAL: SEE NOTE 2.0	FINISH: SEE NOTE 3.0
FSCM NO. 50896	DWG NO. OL-0910-25-1
SCALE 3:1	REV. A