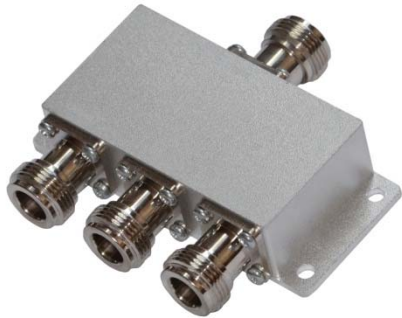




## 1MHz-500MHz 3-Way 50Ω Power Divider



### Wide Band Power Divider

Very small package, Excellent phase and amplitude balance

Bi-Directional as divider and combiner \*

Low Insertion loss and high isolation

Standard: MIL E-5400, MIL E-16400

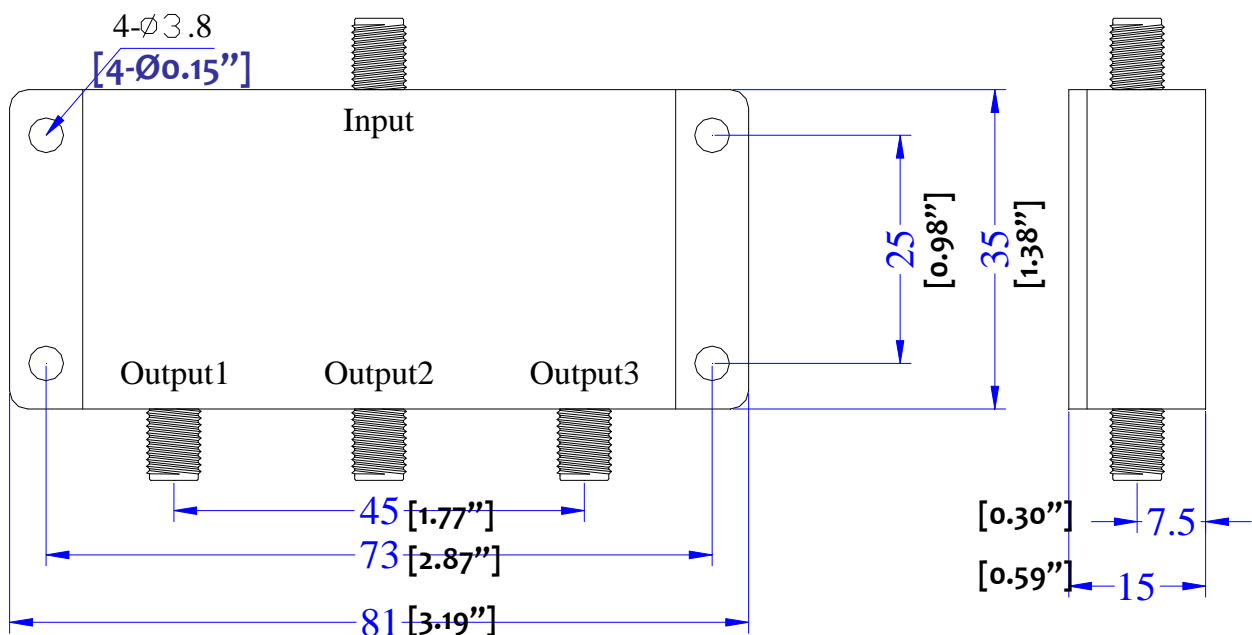
10W forward power handling capability

\* 2W maximum input when work as combiner.

Frequency Range (MHz)	Insertion Loss (dB)		Isolation (dB)			Phase Unbalance (degree)			Amplitude Unbalance (dB)		
	L	U	L	M	U	L	M	U	L	M	U
	1-500	1.5	1.5	20	20	20	2	3	4	0.2	0.3

#### Notes:

1. Case material: Aluminum alloy with Nickel-plating.
2. Connector: N/SMA/BNC/TNC...
3. Temperature -40° C ~ +85° C





# RF-LAMBDA

The power beyond expectations

## RFLT3W0005GN

1MHz-500MHz 3-Way Power Divider

