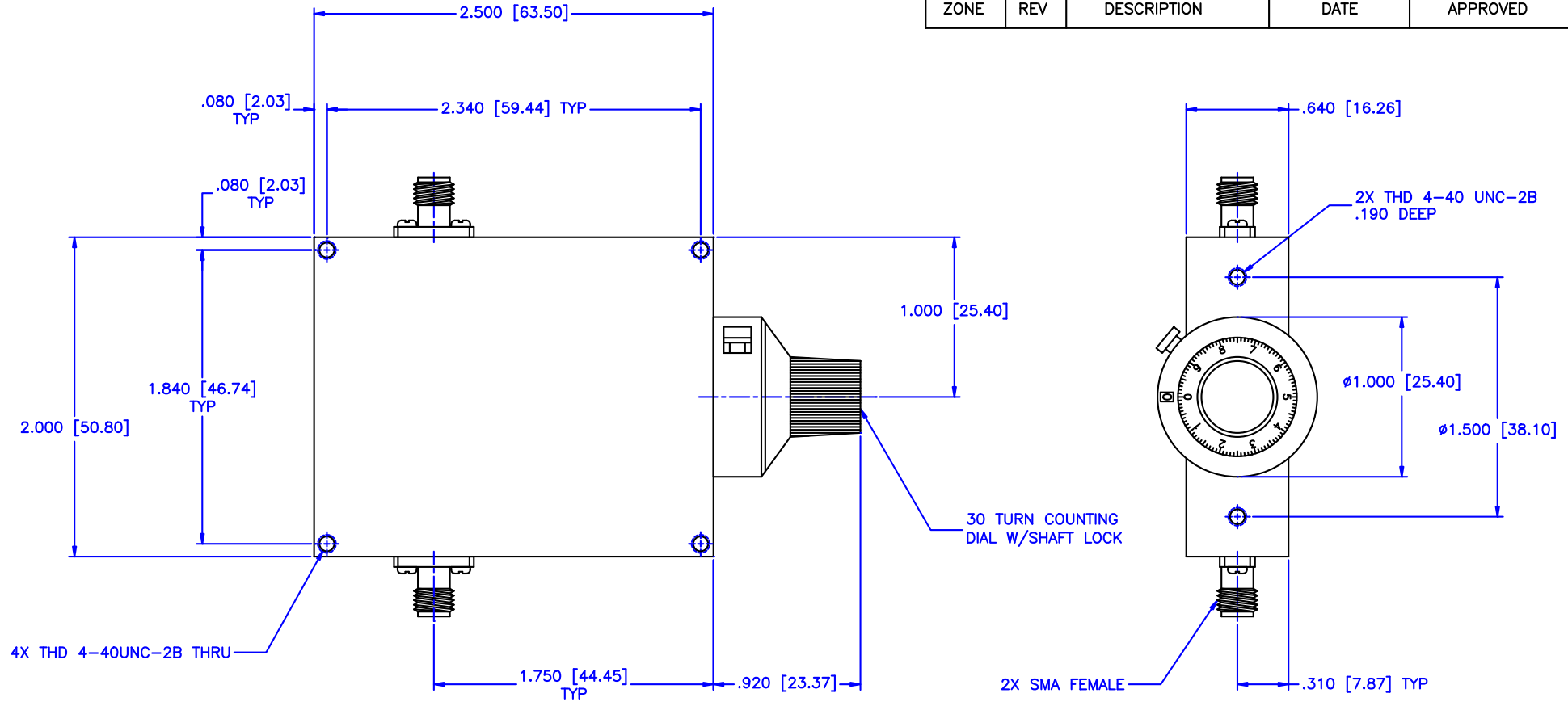


REVISIONS				
ZONE	REV	DESCRIPTION	DATE	APPROVED



SPECIFICATION:

Frequency Range: 2-4.2 GHz
 Attenuation: 30dB
 Insertion Loss: 0.5 Max.
 VSWR: 1.50:1 Max.
 RF Power: 7 W Average, 3kW Peak

Environmental:

Temperature range: -55°C to +110°C
 Shock: 15 G's, 11ms, 1/2 sine
 Vibration: 3 G's overall
 Altitude: 40,000 ft. Survival
 25,000ft Operating

MATERIAL:		MCLI MICROWAVE COMMUNICATIONS LABORATORIES INC. 7255 30TH AVE. N. SAINT PETERSBURG, FL 33710 TEL: (727) 344-6254 FAX: (727) 381-6116 http://WWW.MCLI.COM	SCALE:		N/A
			DRAWING TITLE:		CONTINUOUSLY VARIABLE ATTENUATOR WITH DIAL
		PART NO.		CVA5-30/D	
DRAWN: Paiboon Luekhamhan		DATE: 11-18-2001		CAGE CODE: OD2L5	
APPROVED: T. Nguyen		DATE: 11-18-2001		SIZE: A	
		PROPRIETARY NOTICE: THE INFORMATION IN THIS DRAWING IS PROPRIETARY AND SHALL NOT BE USED OR DISCLOSED WITHOUT WRITTEN PERMISSION FROM MICROWAVE COMMUNICATIONS LABORATORIES INC. (MCLI)		REV: N/A	
		THIRD ANGLE PROJECTION 		DWG NO. 85406	
				DO NOT SCALE THE DRAWING	