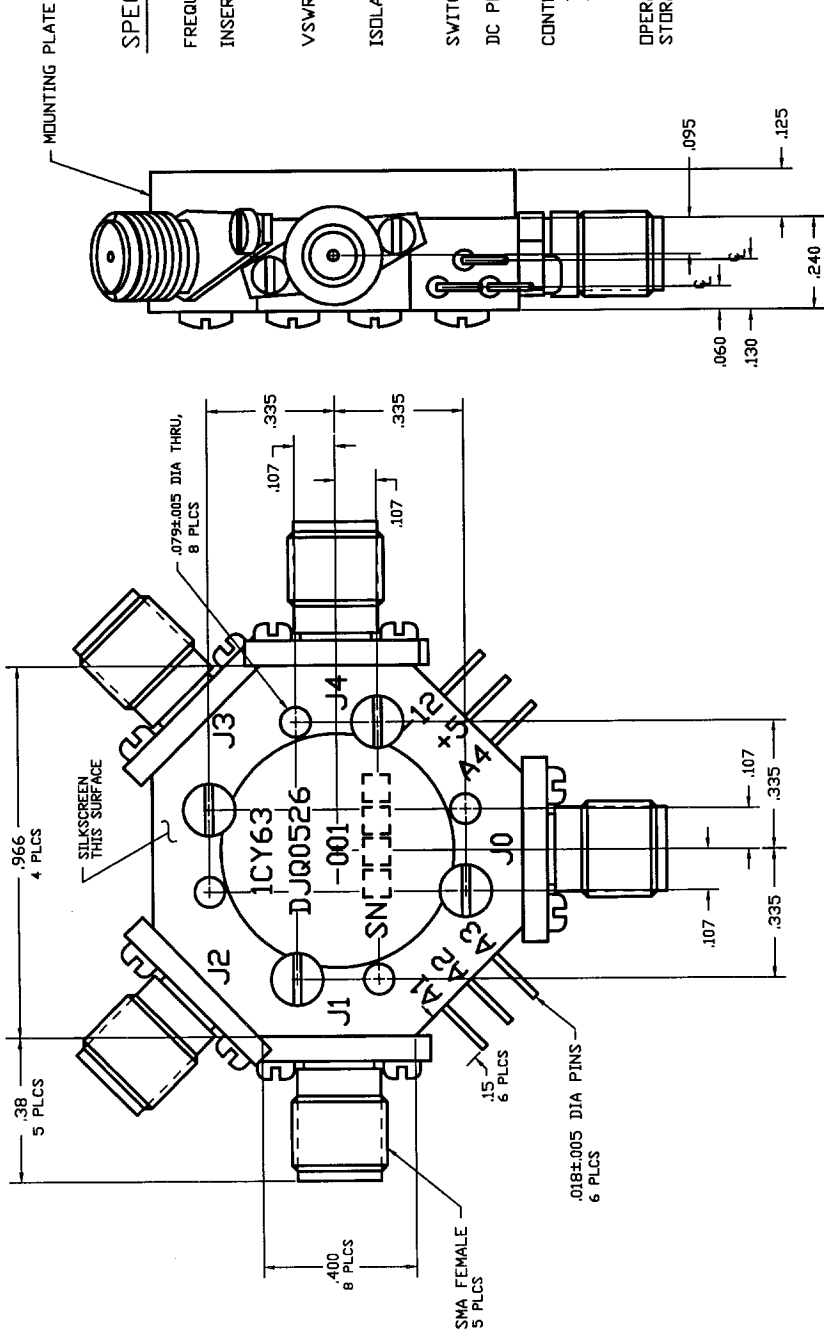


REV.	DESCRIPTION	DATE	APPROVED
NC	INITIAL RELEASE		



### SPECIFICATIONS:

FREQUENCY:	0.5-26.5 GHz
INSERTION LOSS:	0.5-8.0 GHz: 2.2 dB MAX 8.0-18.0 GHz: 3.1 dB MAX 18.0-26.5 GHz: 4.1 dB MAX
VSWR(50 OHM):	0.5-20.0 GHz: 2.0:1 MAX 20.0-26.5 GHz: 2.3:1 MAX
ISOLATION:	0.5-20.0 GHz: 65 dB MIN. 20.0-26.5 GHz: 60 dB MIN.
SWITCHING SPEED:	75nSEC MAX
DC POWER:	+5V @ 125mA MAX -12V @ 50mA MAX
CONTROL:	TTL LOW - INSERTION LOSS TTL HIGH - ISOLATION
OPERATING TEMP. RANGE:	-55° TO +100°C
STORAGE TEMP. RANGE:	-55° TO +100°C

SIERRA MICROWAVE TECHNOLOGY		OUTLINE FOR DJQ0526-001		REV.	
FRACTIONS DECIMALS ANGLES .XX± .02 ± .XXX± .010		APPROVALS		DATE	
MATERIAL		DRAWN			
FINISH		CHECKED			
NEXT ASSY		ISSUED			
603-0044-001	DJQ0526-001	SIZE		FSCM NO.	
		B		1CY63	
USED ON		DWG. NO.		605-0277-001	
APPLICATION		SCALE			