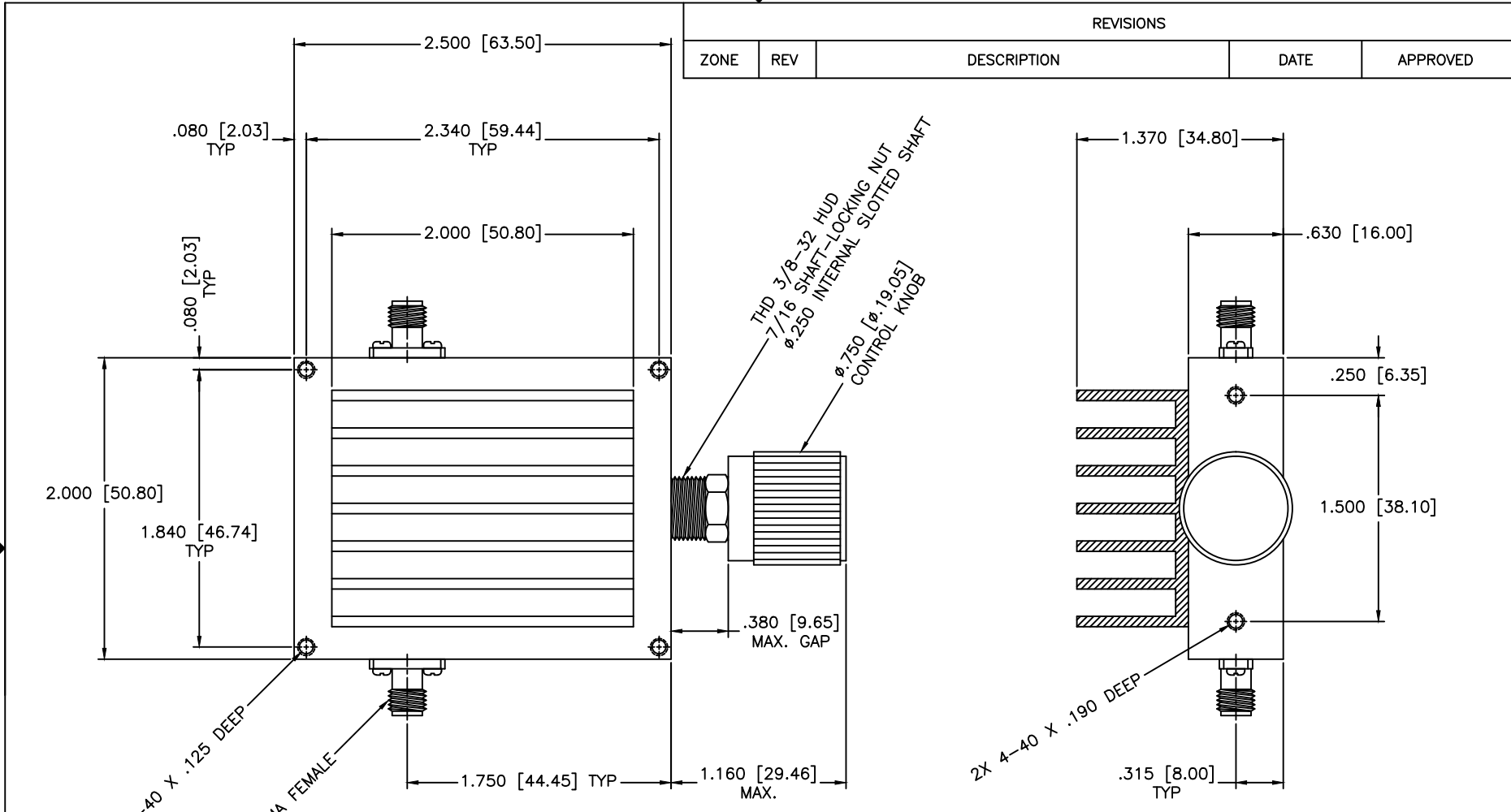


REVISIONS				
ZONE	REV	DESCRIPTION	DATE	APPROVED



**SPECIFICATION**

Frequency Range: 7.9–12.7 GHz  
Attenuation: 10dB  
Insertion Loss: 0.5 Max.  
VSWR: 1.50:1 Max.  
RF Power: 30W Average, 5kW Peak

MATERIAL:	
DRAWN:	DATE:
Paiboon Luekhamhan	02-10-2011
APPROVED:	DATE:
T. Nguyen	02-10-2011

**MCLI** MICROWAVE COMMUNICATIONS LABORATORIES INC.  
7255 30TH AVE. N. SAINT PETERSBURG, FL 33710  
TEL: (727) 344-6254 FAX: (727) 381-6116  
http://WWW.MCLI.COM

UNLESS OTHERWISE SPECIFIED:  
TOLERANCES  
IN (INCHES) OR [mm] (MILLIMETERS)  
FRACTIONS: ± 1/64  
DECIMALS: ±.015  
ANGLE: ±1/2°

THIRD ANGLE PROJECTION

SCALE:	N/A
SHEET:	N/A
DRAWING TITLE:	
CONTINUOUSLY VARIABLE ATTENUATOR, HIGH POWER	
PART NO.	
HA30-7-10	
CAGE CODE:	SIZE:
OD2L5	A
REV:	DWG NO.
N/A	85487
DO NOT SCALE THE DRAWING	