



ISSUE 1; August 2014 - RoHS 2011/65/EU

Description

- PLL based, one time only factory programmable for a fast lead time
A SMD crystal oscillator in a hermetically sealed ceramic package with a metal lid
See IQXO-690 for our standard crystal oscillator alternative

Frequency Parameters

- Frequency 1.0MHz to 200.0MHz
- Frequency Stability ± 25.00 ppm
- Ageing: ± 5 ppm max in 1st year @ 25°C

Electrical Parameters

- Supply Voltage 3.3V ± 0.3 V

Operating Temperature Ranges

- -40 to 85°C

Output Details

- Output Compatibility LVPECL
- Drive Capability 50Ω terminated to Vs-2.0V
- Output Voltage VoH: Vs - 1.025V
Output Voltage VoL: Vs - 1.620V

Output Control

- Tri-state Operation (CMOS):
Logic '1' to pin 1 enables oscillator output
Logic '0' to pin 1 disables oscillator output; when disabled the oscillator output goes to the high impedance state
No connection to pin 1 enables oscillator output

Noise Parameters

- Period Jitter: 10ps rms max

Environmental Parameters

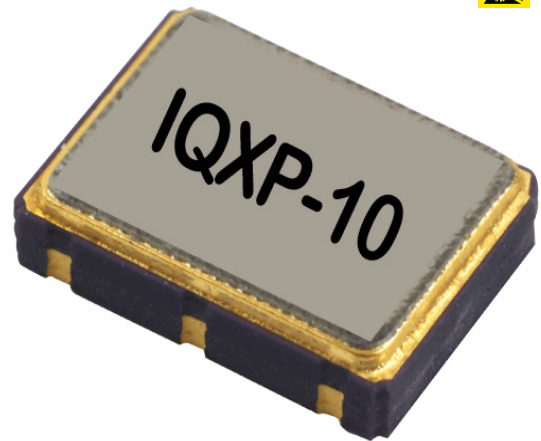
- Storage Temperature Range: -55 to 125°C

Ordering Information

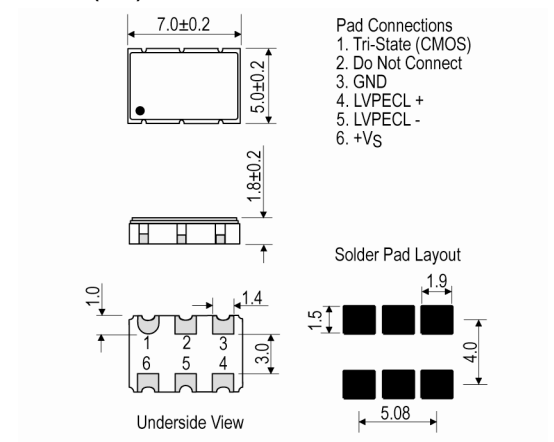
- Frequency*
Model*
Output Compatibility
Frequency Stability (over operating temperature range)*
Operating Temperature Range*
Supply Voltage
(*minimum required)
- Example
100.0MHz IQXP-10
LVPECL ± 25 ppm -40 to 85C 3.3V

Compliance

- RoHS Status Compliant
- REACH Status Compliant
- MSL Rating (JDEC-STD-033): Not Applicable



Outline (mm)



Sales Office Contact Details:

UK: +44 (0)1460 270200

France: +33 (0)5 34 50 91 18

Email: info@iqdfrequencyproducts.com

Germany: +49 (0) 30 408 192 300

USA: +1 408.273.4530

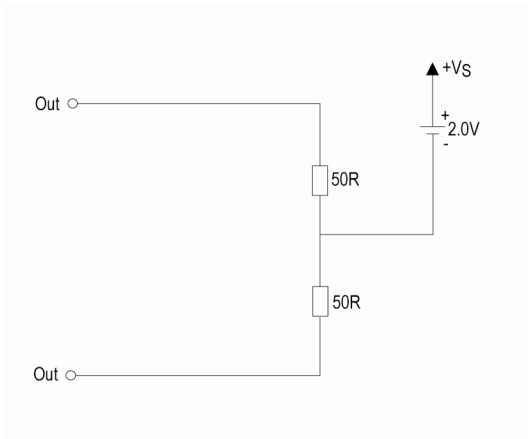
Web: www.iqdfrequencyproducts.com



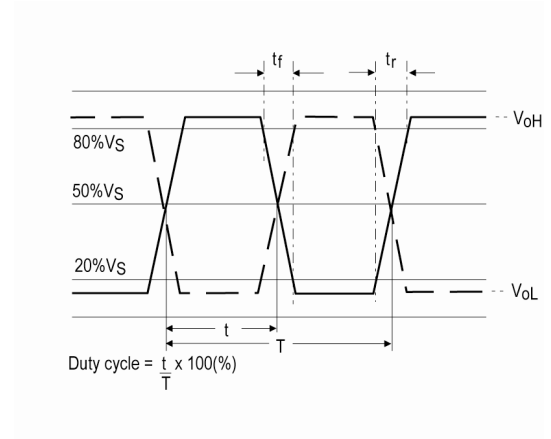
Packaging Details

- Pack Style: Reel Tape & reel in accordance with EIA-481-D
Pack Size: 1,000
- Pack Style: Cutt In tape, cut from a reel
Pack Size: 1
- Pack Style: Bulk Loose in bulk pack
Pack Size: 1

Test Circuit



Wave Form



Electrical Specification - maximum limiting values 3.3V ±0.3V

Frequency Min	Frequency Max	Temperature Range	Stability (min)	Current Draw	Rise and Fall Time	Duty Cycle
		°C	ppm	mA	ns	%
1.0MHz	200.0MHz	-40 to 85	±25.0	100	1.5	45/55

*This document was correct at the time of printing; please contact your local sales office for the latest version.
[Click to view latest version on our website.](#)*

Sales Office Contact Details:

UK: +44 (0)1460 270200
Germany: +49 (0) 30 408 192 300

France: +33 (0)5 34 50 91 18
USA: +1 408.273.4530

Email: info@iqdfrequencyproducts.com
Web: www.iqdfrequencyproducts.com