

NOTES:

1. MATERIALS AND FINISHES:

- MCX BODY - BRASS, GOLD PLATED (.000010" MIN.) OVER NICKEL
- ADAPTER BODY - STAINLESS STEEL, PASSIVATED
- CONTACT - BERYLLIUM COPPER, GOLD PLATED (.000030" MIN.) OVER NICKEL
- INSULATOR - PTFE

2. ELECTRICAL:

- A. IMPEDANCE: 50 OHM
- B. FREQUENCY RANGE: DC TO 6.0 GHz
- C. VSWR(RETURN LOSS): 1.100 (-26.4 dB) FROM DC-1.0 GHz  
1.200 (-20.8 dB) FROM 1.0-3.0 GHz  
1.300 (-17.7 dB) FROM 3.0-6.0 GHz
- D. D.W.V.: 500 VRMS, MIN.

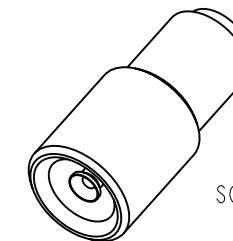
3. MECHANICAL:

- A. DURABILITY: 100 CYCLES MIN.
- B. TEMPERATURE RANGE: -65° C TO +165° C

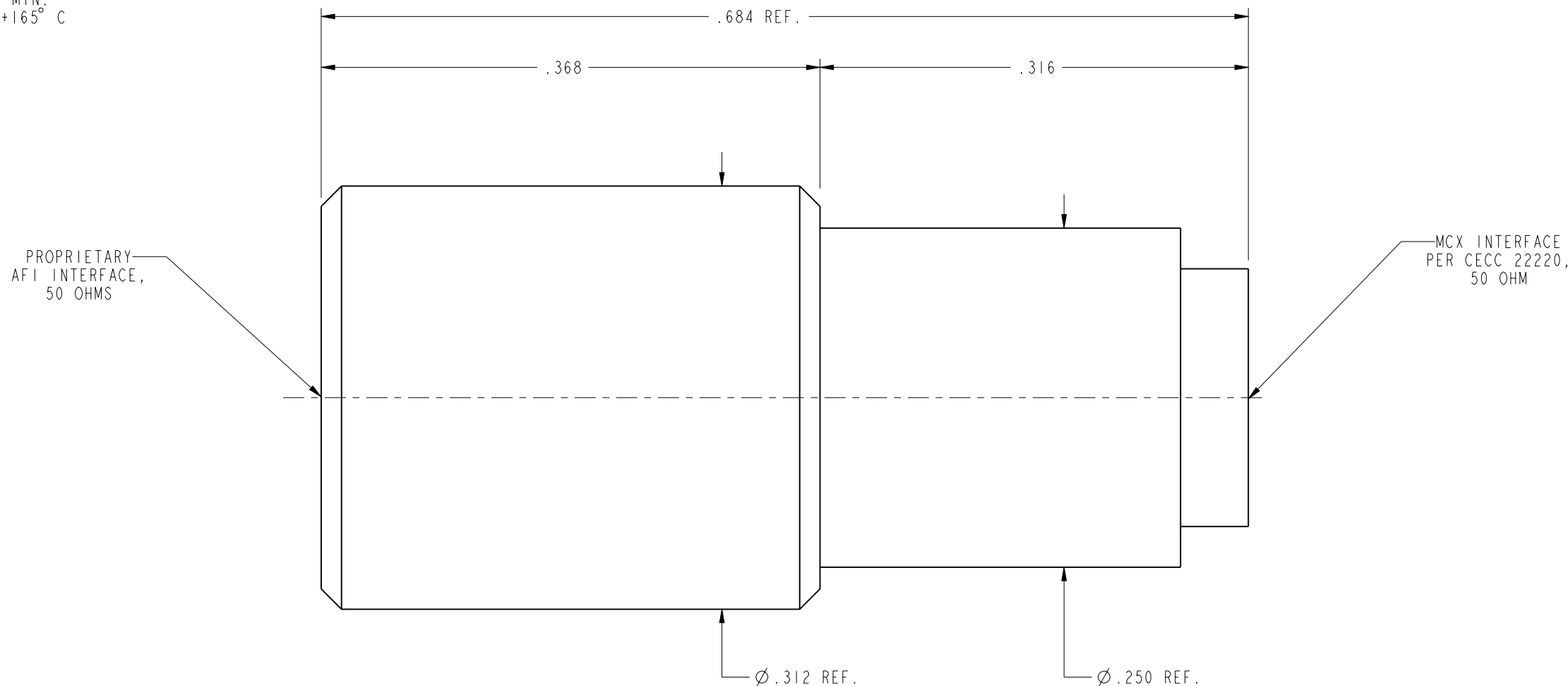
4. PACKAGING:

- A. QUANTITY: SINGLE PACK
- B. MARKING: AMPHENOL  
920-145A-51S  
DATE CODE (YYWW)

920-145A-51S		REVISIONS			
DRAWING NO.	REV	DESCRIPTION	DATE	ECO	APPR
THIRD ANGLE PROJ.	A	RELEASE TO MFG.	12/12/03	44729	BCG



SCALE 2.000



**CUSTOMER OUTLINE DRAWING**  
ALL OTHER SHEETS ARE FOR INTERNAL USE ONLY

UNLESS OTHERWISE SPECIFIED, DIMENSIONS ARE IN INCHES AND TOLERANCES ARE: 2 PLACE DECIMAL ±.015 (0,381 mm) 3 PLACE DECIMAL ±.005 (0,127 mm) ANGLES ± 1°	MATERIAL	DRAWN B.C. GLEISSNER	DATE 03-Dec-03	TITLE AFI-50 TO MCX-50, FEMALE-FEMALE ADAPTER	Amphenol RF Danbury, CT, USA Tainan, Taiwan Shenzhen, China www.amphenolrf.com	
	REFERENCE 615X-1941-100	ENGINEER B.C. GLEISSNER	DATE 13-Jun-03			
NOTICE - These drawings, specifications, or other data (1) are, and remain the property of Amphenol Corp. (2) must be returned upon request; and (3) are confidential and not to be disclosed to any person other than those to whom they are given by Amphenol Corp. The furnishing of these drawings, specifications, or other data by Amphenol Corp., or to any other person to anyone for any purpose is not to be regarded by implication or otherwise in any manner licensing, granting rights or permitting such holder or any other person to manufacture, use or sell any product, process or design, patented or otherwise, that may in any way be related to or disclosed by said drawings, specifications, or other data.	EAR# 837 GEN# ASSYF22_AFI	APPROVED O. BARTHELMES	DATE 12/12/03	SCALE: 10.0:1	SHEET 2 OF 2	
		CAD FILE I:\AFI\920-145A-51S	CODE ID 74868	DWG SIZE B	DRAWING NO. 920-145A-51S	REV A