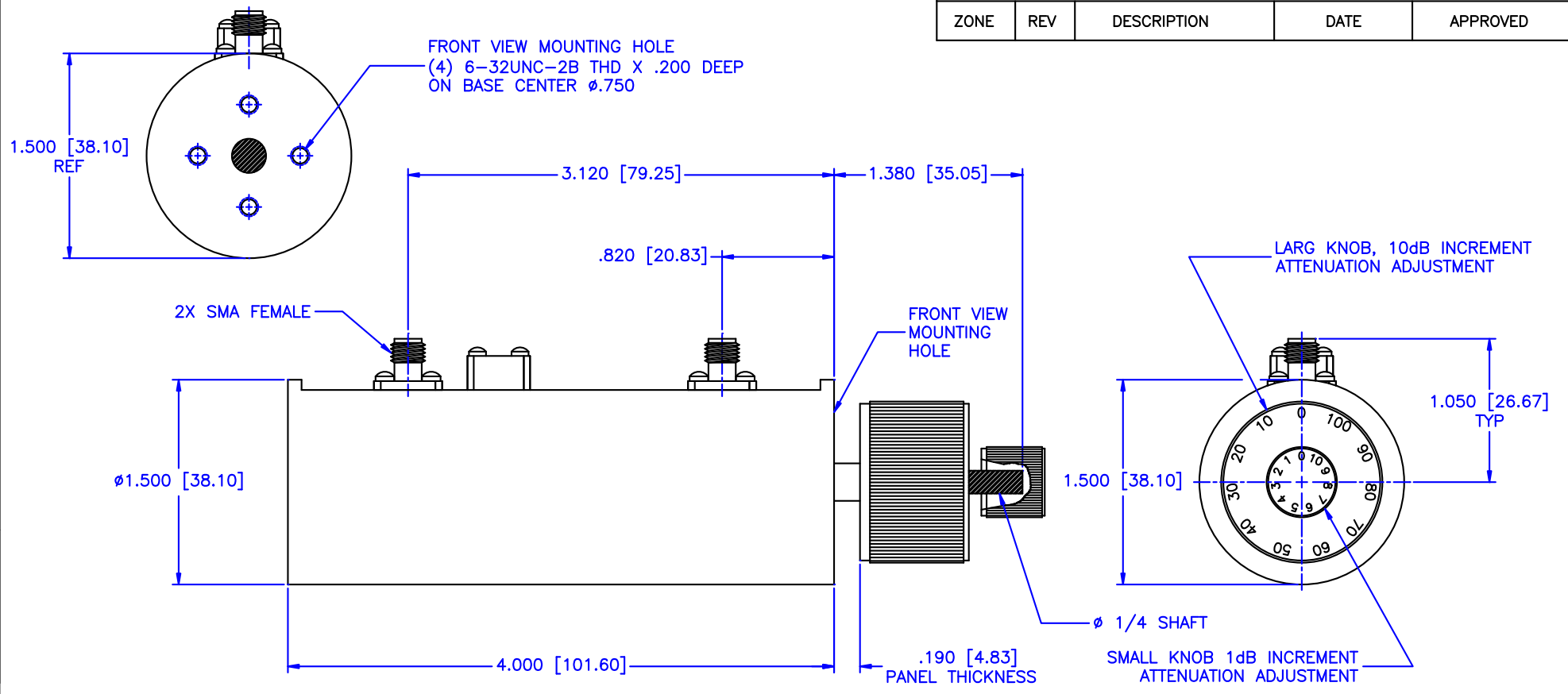


REVISIONS				
ZONE	REV	DESCRIPTION	DATE	APPROVED



Specifications:

Frequency Range: 406-406.1 MHz
 Attenuation Range: 30dB
 Attenuation Accuracy: ±0.4dB or 3%
 Insertion Loss: 0.5/1 Max.
 VSWR: 1.80:1
 RF Input Power: 2W Average, 1kW Peak

Environmental:

Temperature range: -20°C to +85°C
 Shock: 15 G's, 11mS, 1/2 sine
 Vibration: 3 G's overall
 Altitude: 40,000 ft. Survival 25,000ft Operating

MATERIAL:		MICROWAVE COMMUNICATIONS LABORATORIES INC. 7255 30TH AVE. N. SAINT PETERSBURG, FL 33710 TEL: (727) 344-6254 FAX: (727) 381-6116 http://WWW.MCLI.COM		SCALE:	N/A
		UNLESS OTHERWISE SPECIFIED: TOLERANCES IN (INCHES) OR [mm] (MILLIMETERS) FRACTIONS: ± 1/64 DECIMALS: ±.01 ±.005 ANGLE: ±1/2°		SHEET:	N/A
DRAWN: Paiboon Luekhamhan		DATE: 02-07-2011		DRAWING TITLE: DUAL CONCENTRIC ROTARY STEP ATTENUATOR	
APPROVED: T. Nguyen		DATE: 02-07-2011		PART NO. CVA34-30	
THIRD ANGLE PROJECTION		CAGE CODE:	SIZE: A	REV: N/A	DWG NO.
		0D2L5	DO NOT SCALE THE DRAWING		85367