

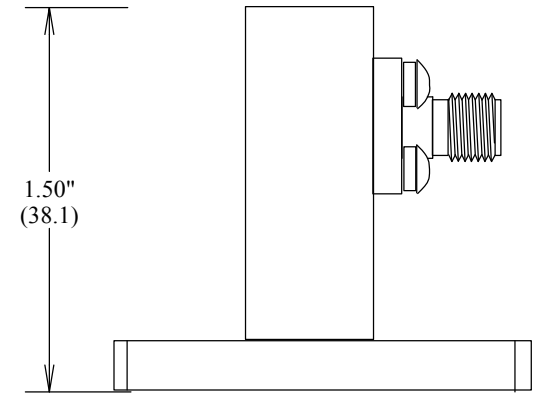
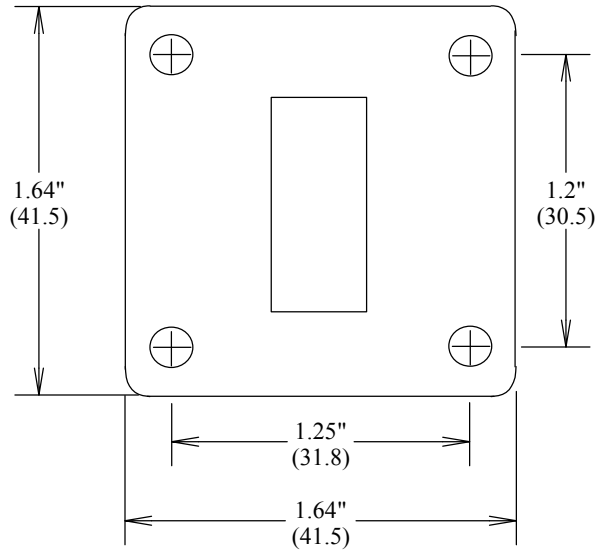
ADAPTER WR90 SMA/F

SMW90AC

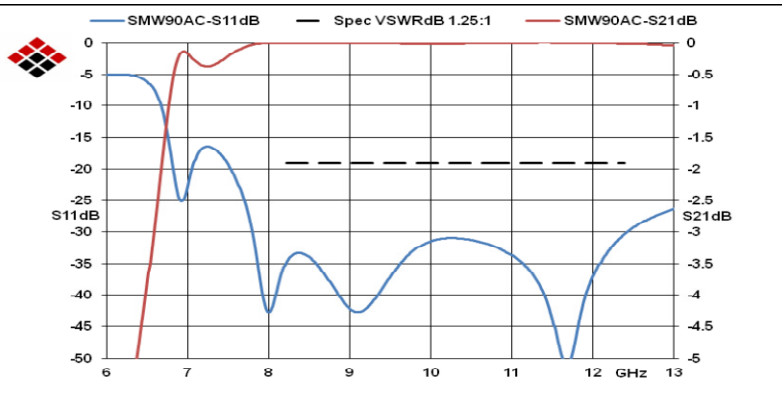
SPECIFICATIONS

FREQUENCY: 8.2-12.4 GHZ
 VSWR: 1.25:1 MAX
 POWER CW: 150 WATTS
 MATERIAL BODY: AI
 MATERIAL CONNECTOR: PASSIVATED
 STAINLESS STEEL
 INTERFACE: MIL-STD-348A
 TEMPERATURE RANGE: -55°C to +120°C

ROHS COMPLIANT



MEASUREMENTS BELOW ARE TYPICAL



FAIRVIEW MICROWAVE INC.

ALLEN, TX 75013 WWW.FAIRVIEWMICROWAVE.COM

TITLE

ADAPTER WR90 SMA/F

SIZE	CAGE CODE	DWG NO	REV
A	3FKR5	SMW90AC	--
SCALE			SHEET

ALL DIMENSIONS IN inches(MM) Typical