



CONNOR-WINFIELD CORPORATION

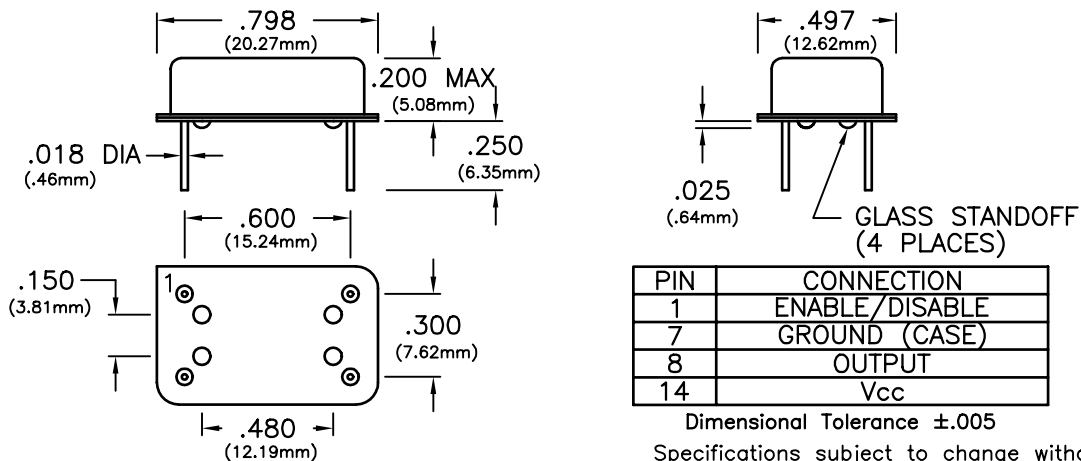
AURORA, IL. 60505

PHONE (630) 851-4722

FAX (630) 851-5040

HCMOS/TTL COMPATIBLE TRI-STATE OUTPUT

SPECIFICATIONS	HC13R8R	HC14R8R	HC15R8R	HC16R8R	
Frequency Range	1MHz to 100MHz				
Frequency Stability	±25ppm	±50ppm	±100ppm	±100ppm	
	(Inclusive of calibration tolerance at 25°C, operating temperature range, input voltage change, load change, aging, shock and vibration)				
Temperature Range	0°C to +70°C	0°C to +70°C	0°C to +70°C	-40°C to +85°C	
Output	Waveform	HCMOS or TTL Compatible Squarewave			
	Load	HCMOS-50pF , TTL-10TTL			
	Voltage	Voh	4.5V Minimum		
		Vol	0.5V Maximum		
	Current	Ioh	-16mA		
		Iol	16mA		
	Duty Cycle	1 to 80MHz	45/55% Maximum Measured at 50% level		
80 to 100MHz		40/60% Maximum Measured at 50% level			
Rise/Fall Time	5nS Maximum				
Input	Output E/D Time	100nS Typical			
	Enable (Vih)	2.2V Minimum			
	Disable (Vil)	0.8V Maximum			
	Oscillator output is enabled with no connection on pin 1				
Start Up Time	10mS Maximum				
Supply Voltage	+5Vdc ±10%				
Supply Current	1 to 25M	25mA Maximum			
	25 to 50M	40mA Maximum			
	50 to 100M	85mA Maximum			
Package	All metal, hermetically sealed, welded package				



BULLETIN #: HC007
PAGE 1 OF 2

REV: 08
DATE: 3/4/97

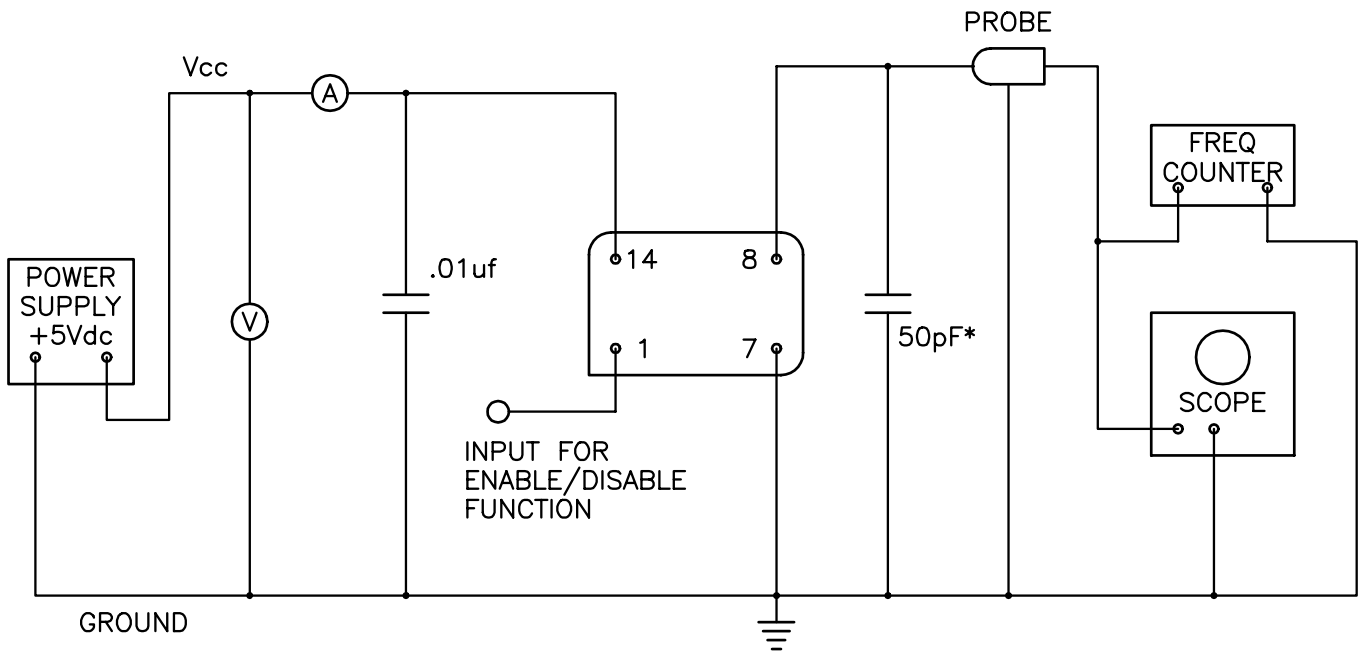
ISSUED BY: _____



CONNOR-WINFIELD CORPORATION

AURORA, IL. 60505
PHONE (630) 851-4722
FAX (630) 851-5040

TEST CIRCUIT



* - TOTAL LOAD CAPACITANCE

Specifications subject to change without notice

BULLETIN #: HC007
PAGE 2 OF 2

REV: 08
DATE: 3/4/97

ISSUED BY: _____