

Passband 1: 450.4 to 457.6 MHz

Diplexer (BP/BP)

Passband 1 Isolation: 55 dB

Passband 2: 460.4 to 467.6 MHz

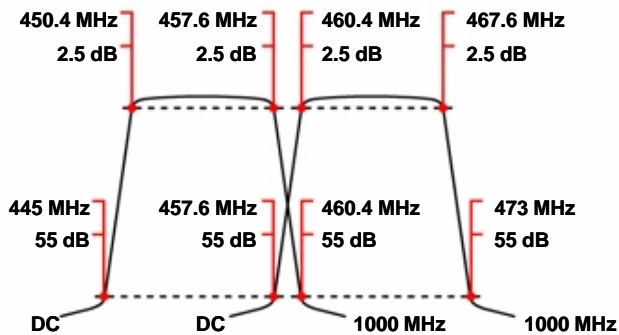
WDCD10+10-450.4-457.6/460.4-467.6-55

Passband 2 Isolation: 55 dB

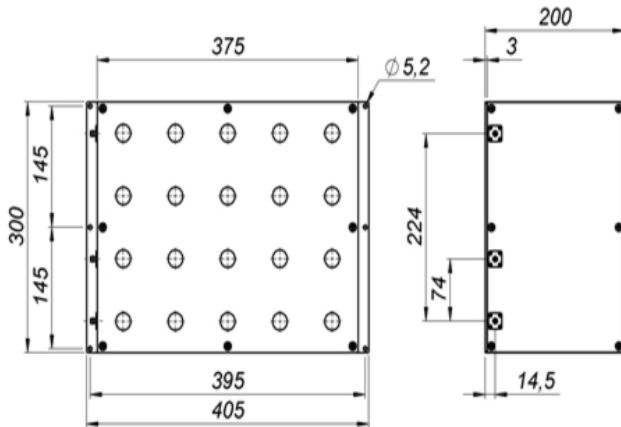
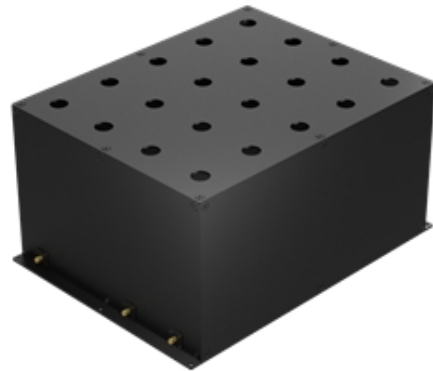
Specifications

| | Band 1 (Bandpass) | Band 2 (Bandpass) |
|--------------------------|---|-------------------------|
| Passbands: | 450.4 to 457.6 MHz | 460.4 to 467.6 MHz |
| Passband Insertion Loss: | 2.5 dB max. | 2.5 dB max. |
| Passband Return Loss: | 14 dB min. | 14 dB min. |
| Stopbands: | DC-445 & 460.4-1000 MHz | DC-457.6 & 473-1000 MHz |
| Stopband Attenuation: | 55 & 55 dB min. | 55 & 55 dB min. |
| Operating Temperature: | 15 °C to 45 °C | |
| Power Handling: | max. 100 W CW into a 2:1 VSWR (<i>Please see our warranty in this regard</i>) | |
| Dimensions (L x W x H): | 375 x 300 x 200 mm (plus connectors and flanges) | |
| Approx. Weight: | 25.5 kg | |
| Mounting Provision: | 15 mm flanges on both ends with 4.3 mm holes | |
| Connector Common: | - Please choose - | |
| Connector Band 1: | - Please choose - | |
| Connector Band 2: | - Please choose - | |

Typical Performance



10+10 Section Cavity Design



©2015 Wainwright Instruments. All rights reserved.

Euro Prices

(USD Prices will be quoted for US-based customers only)

| | |
|--------------|--------|
| 1 - 4 pcs: | € 4038 |
| 5 - 9 pcs: | € 3836 |
| 10 - 24 pcs: | € 3644 |

Delivery Terms

FCA Andechs (free carrier) according to **Incoterms 2010**
 In Deutschland liefern wir frachtfrei gemäß CPT **Incoterms 2010** (unversichert).
 Regarding payment terms and warranty see [Terms and Conditions](#).
Delivery time: normally 3 to 4 weeks - depending on quantity ordered and on our work load.

Customer is responsible for observing all applicable export laws in regard to filter application and location of end user



Wainwright Instruments GmbH
 www.wainwright-filters.com

Tel: +49 8152 918230
 Fax: +49 8152 918255
 info@wainwright-filters.com