

Features

- Frequency Range: 10~300MHz
- High Gain: 75.0dB(typ)
- Output Limiting Level:12.0dBm(Typical)
- Standard Hermetic Package
- Operating Temperature Range: -55°C~+85°C

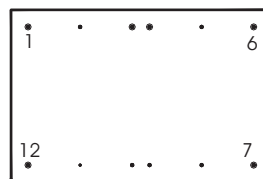
Electrical (50 Ω, V_{CC}=+12V, -55°C ≤ T_A ≤ +85°C)

Parameter	Symbol	Unit	Guaranteed	Typical
Frequency range	f _L ~f _H	MHz	10~300	10~300
Gain	G _p	dB	70.0	75.0
Gain Flatness	ΔG _p	dB	±0.5	±0.3
Noise figure	F _n	dB	5.0 ^Δ	3.5
Output Limiting level	P _o	dBm	10.0	12.0
VSWR	VSWR	—	2.0:1	1.3:1
Phase Variation	ΔPH	°	±5	±3
Limiting	—	dB	-60~0	-62~0
Supply current	I _{CC}	mA	300	240

Note: “ Δ ” T_A=24 ± 1°C.

Maximum Ratings

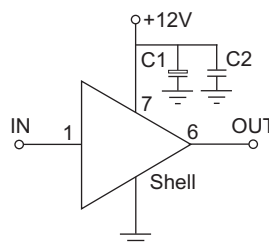
Power supply: +13.0V_{DC}
 RF input: +10dBm
 Storage Temp: +150°C



HD-28A-1

Application Notes

1. Typical application shown as right, C₁=3.3~22 μF, C₂=1000~3300pF.
2. pin function:
 1.input 6.output 7.power supply
 other:GND



Typical Curves

