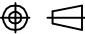


# SPECIFICATIONS

**PRODUCTION  
RELEASE**

NOTE:  
THIS DRAWING INCORPORATES  
THIRD ANGLE PROJECTION.



INTERPRET IAW ANSI Y14.5-1992

REVISIONS

LTR	DESCRIPTION	DATE	APPROVED
C	RELEASED	07/21/2011	D. SAUNDERS

**ELECTRICAL**

FREQUENCY RANGE DC - 3GHz, 6GHz & 8GHz

VSWR  
 DC - 4 GHz \_\_\_\_\_ 1.20:1 MAX  
 4 - 8 GHz \_\_\_\_\_ 1.30:1 MAX

INPUT POWER \_\_\_\_\_ 25 WATTS AVG. @ 25°C  
DERATED LINEARLY TO 10 WATTS @ 125°C

PEAK POWER \_\_\_\_\_ 500 WATTS  
(5µSec PULSE, 0.05 % DUTY CYCLE)

IMPEDANCE \_\_\_\_\_ 50 OHMS

OPERATING TEMP RANGE \_\_\_\_\_ -65°C TO +125°C

**MECHANICAL**

TYPE N CONNECTORS \_\_\_\_\_ BRASS, Ag OR WHITE BRONZE PLATED  
 CONDUCTORS \_\_\_\_\_ SILVER PLATED BERYLLIUM COPPER OR P. BRONZE  
 HOUSING \_\_\_\_\_ BLACK ANODIZED ALUMINUM

**ORDERING INFORMATION**

7601-6525-FQ-80 \_\_\_\_\_ DIN 7/16 MALE INPUT  
 7601-6525-FQ-80-C6 \_\_\_\_\_ DIN 7/16 MALE INPUT W/ 6" BEAD CHAIN  
 7602-6525-FQ-80 \_\_\_\_\_ DIN 7/16 FEMALE INPUT  
 7602-6525-FQ-80-C6 \_\_\_\_\_ DIN 7/16 FEMALE INPUT W/ 6" BEAD CHAIN

TO DESIGNATE MAX FREQUENCY REPLACE "FQ" WITH:  
 ".03" = 3 GHz; ".06" = 6 GHz; ".08" = 8 GHz

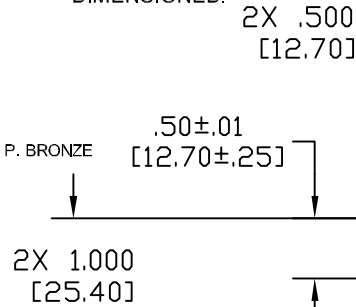
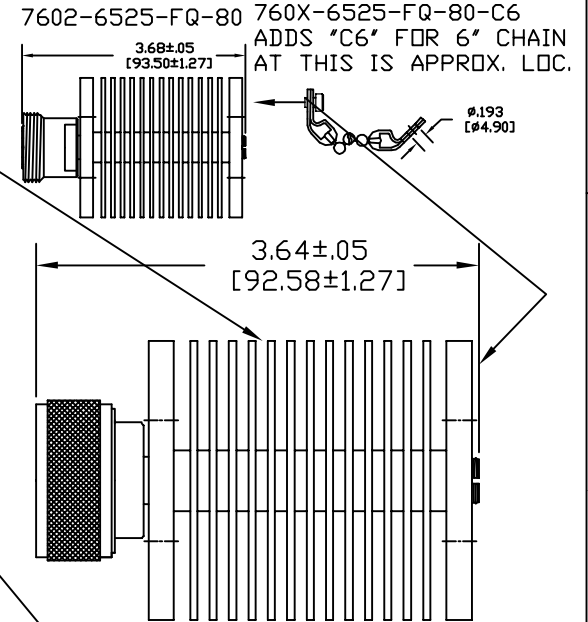
THIS 25 WATT UNIT IS AVAILABLE WITH:  
 SMA, TNC, AND TYPE N CONNECTORS  
 AND AS AN ATTENUATOR - CONTACT YOUR  
 REPRESENTATIVE FOR ORDERING INFORMATION

QUANTITY OF HEATSINK FINS, THICKNESS AND FIN  
 SPACING MAY VARY WITHOUT NOTICE. BASIC SHAPE  
 & OTHER PARAMETERS SHALL REMAIN AS  
 DIMENSIONED.

XMA OPTION TO PROVIDE  
 NUT WITH OR WITHOUT  
 WRENCH FLATS IN FUTURE

4X 4-40 UNC-2B  
 THRU ONE WALL ONLY  
 BOTH SIDES

Standard Is METALIZED  
 MYLAR LABEL (2 MIN.)  
 AFFIXED PERMANENTLY  
 FOR INFO & IDENTIFICATION



DRAWING PRACTICES PER ANSI-Y-14.5 NIL-STD-100 & 1000	
DIMENSIONS ARE IN INCHES AND APPLY BEFORE/AFTER PROCESSING	
SURFACE ROUGHNESS INCHES	✓
FINISH	SEE NOTES
MATERIAL	SEE NOTES

UNLESS OTHERWISE SPECIFIED TOLERANCES IN:		
DECIMALS	INCH	DWG
.X"	.1"	[2.5]
.XX"	.050"	[1.3]
.XXX"	.020	[.54]
.XXXX"		
ANGLES		
UNLESS OTHERWISE NOTED DIAS CONCENTRIC <.003 T.I.R.		

DRAWN	D. Saunders	DATE	07/14/2011
CHECKED	D. Saunders	DATE	07/14/2011
ENGINEER APPR.	D. Saunders	DATE	07/14/2011
THESE DRAWINGS AND SPECIFICATIONS ARE THE PROPERTY OF XMA CORP. OR OMNI SPECTRA AND SHALL NOT BE REPRODUCED, COPIED NOR USED - IN WHOLE OR IN PART - AS A BASIS FOR THE MANUFACTURE OR SALE OF OTHER ITEMS WITHOUT THE EXPRESS WRITTEN PERMISSION OF XMA CORP.			

**XMA** Powered by

Omni Spectra®  
 Phone: 603-222-2256 Fax: 603-222-2259  
 150 Dow Street, Manchester, NH 03101

TITLE  
**OUTLINE DRAWING TERMINATION**  
 25 W, DIN 7/16, Up To 8 GHz

SIZE	CAGE CODE	DRAWING NUMBER
B	3HT76	760X-6525-FQ-DB
SCALE 1:1	PLANT AREA SQ. IN	XXX
		SHEET 1 OF 1

BCSI