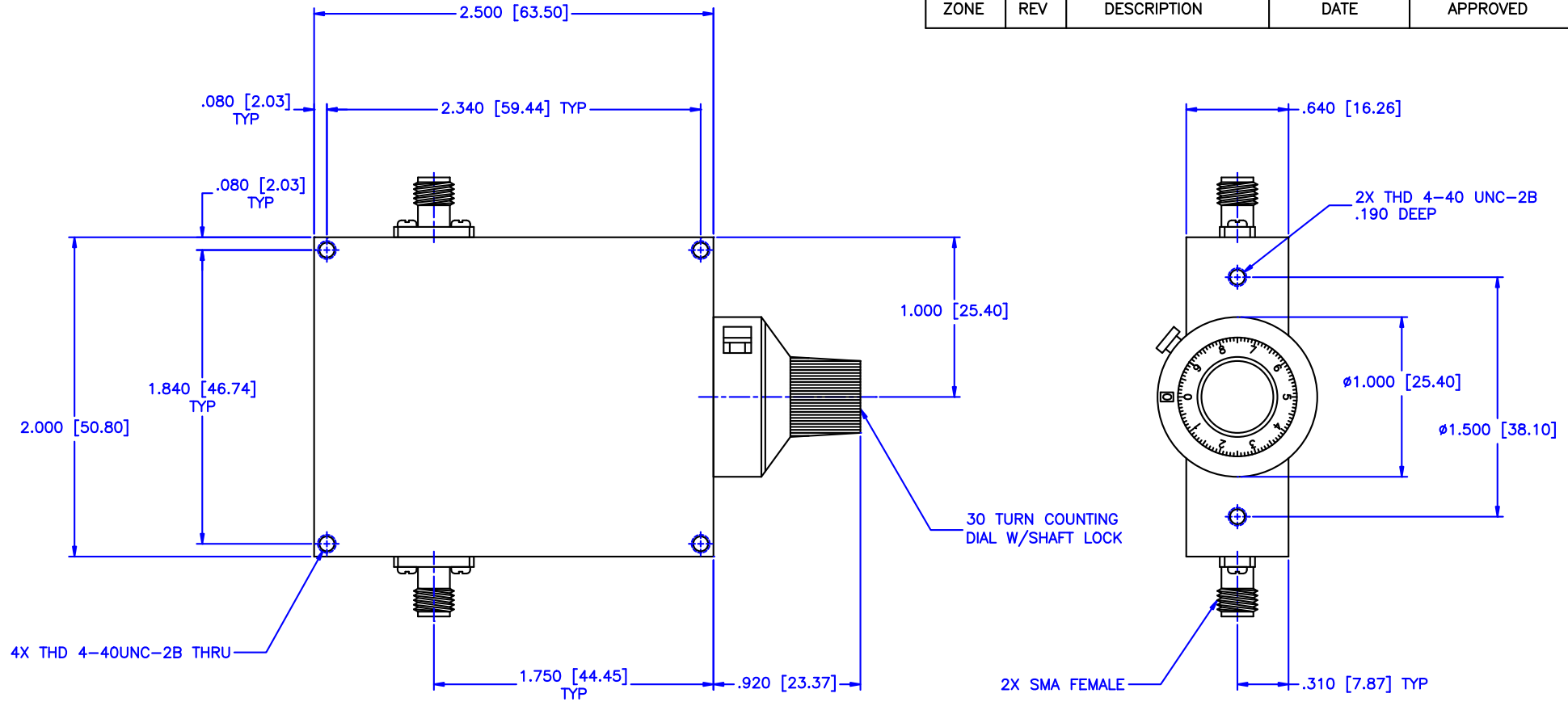


REVISIONS				
ZONE	REV	DESCRIPTION	DATE	APPROVED



**SPECIFICATION:**

Frequency Range: 2-4.2 GHz  
 Attenuation: 10dB  
 Insertion Loss: 0.5 Max.  
 VSWR: 1.50:1 Max.  
 RF Power: 7 W Average, 3kW Peak

**Environmental:**

Temperature range: -55°C to +110°C  
 Shock: 15 G's, 11mS, 1/2 sine  
 Vibration: 3 G's overall  
 Altitude: 40,000 ft. Survival  
 25,000ft Operating

MATERIAL:		MICROWAVE COMMUNICATIONS LABORATORIES INC. 7255 30TH AVE. N. SAINT PETERSBURG, FL 33710 TEL: (727) 344-6254 FAX: (727) 381-6116 http://WWW.MCLI.COM		SHEET:	N/A
		UNLESS OTHERWISE SPECIFIED: TOLERANCES IN (INCHES) OR [mm] (MILLIMETERS) FRACTIONS: ± 1/64 DECIMALS: ±.01 ±.005 ANGLE: ±1/2°		DRAWING TITLE:	CONTINUOUSLY VARIABLE ATTENUATOR WITH DIAL
DRAWN:	Paiboon Luekhamhan	DATE:	11-18-2001	PART NO.:	CVA5-10/D
APPROVED:	T. Nguyen	DATE:	11-18-2001	CAGE CODE:	OD2L5
PROPRIETARY NOTICE: THE INFORMATION IN THIS DRAWING IS PROPRIETARY AND SHALL NOT BE USED OR DISCLOSED WITHOUT WRITTEN PERMISSION FROM MICROWAVE COMMUNICATIONS LABORATORIES INC. (MCLI)		THIRD ANGLE PROJECTION 		SIZE:	A
				REV:	N/A
				DO NOT SCALE THE DRAWING	
				DWG NO.:	85402