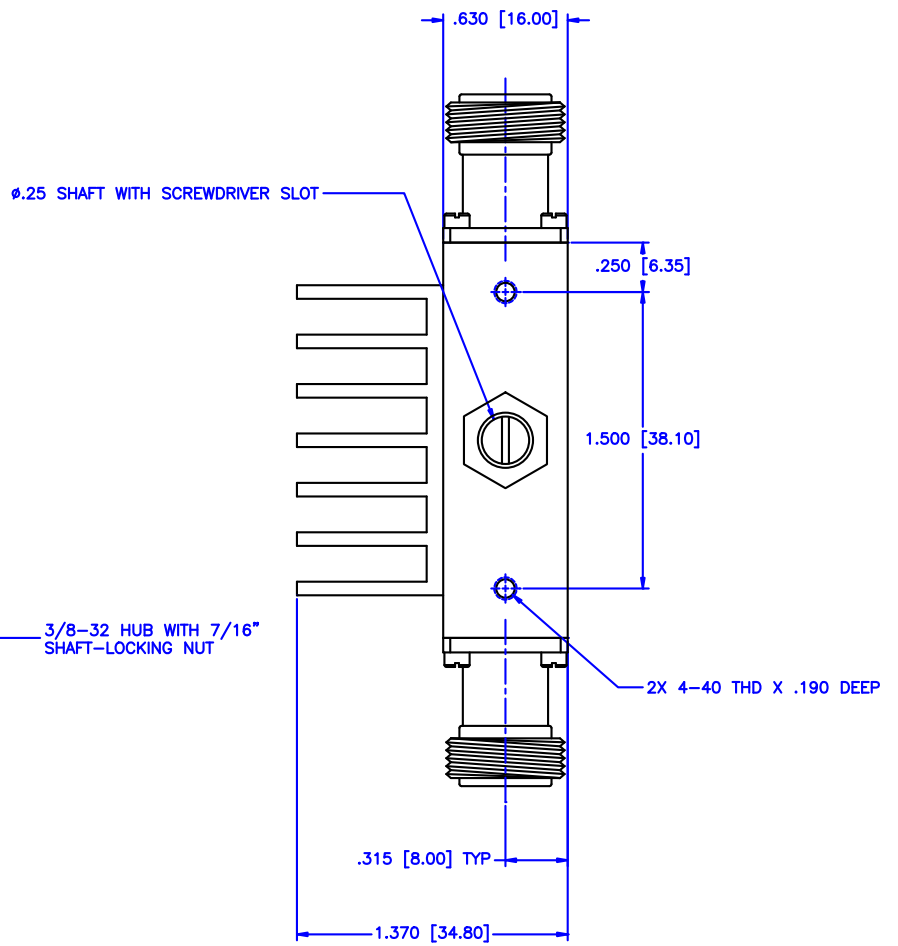
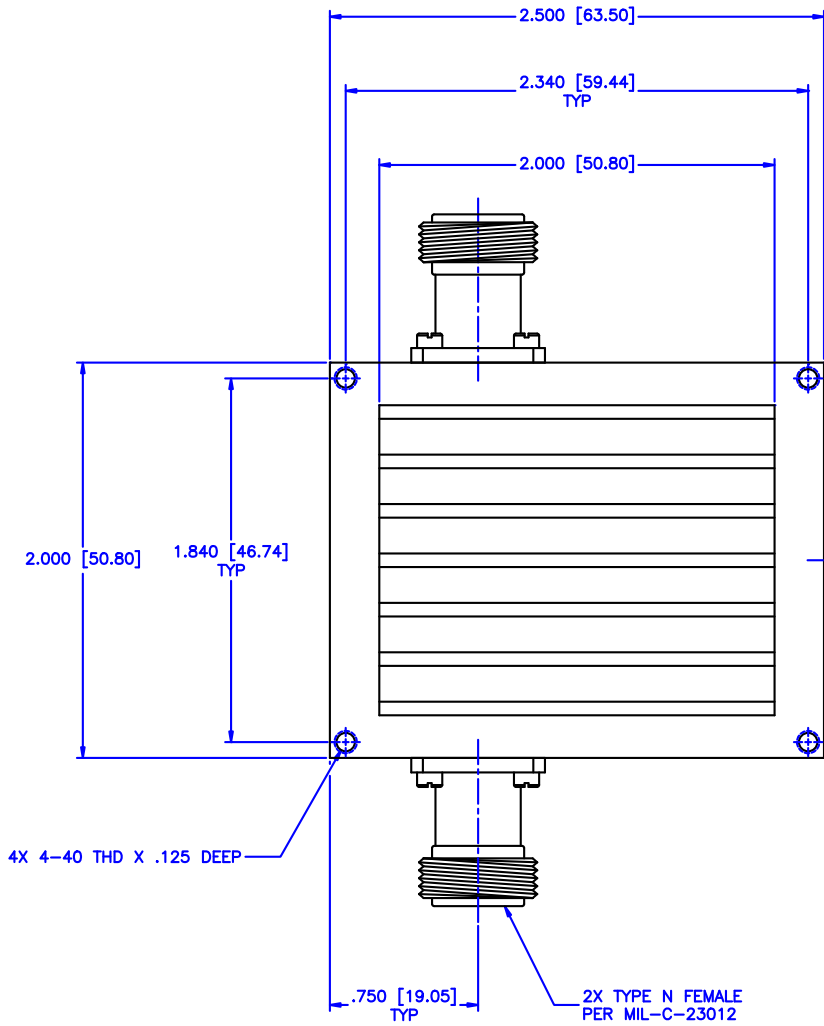


REVISIONS				
ZONE	REV	DESCRIPTION	DATE	APPROVED



Specifications:

Frequency Range: 1-2 GHz
 Attenuation: 10dB
 Insertion Loss: 0.5 Max.
 VSWR: 1.50:1
 Power Handling: 30W Average, 5kW Peak

Environmental:

Temperature range: -55°C to +110°C
 Shock: 15 G's, 11ms, 1/2 sine
 Vibration: 3 G's overall
 Operating Altitude: 25,000 ft
 Servival Altitude: 40,000 ft.

MATERIAL:		MCLI MICROWAVE COMMUNICATIONS LABORATORIES INC. 7255 30TH AVE. N. SAINT PETERSBURG, FL 33710 TEL: (727) 344-6254 FAX: (727) 381-6116 http://WWW.MCLI.COM	SCALE:	N/A
			SHEET:	N/A
UNLESS OTHERWISE SPECIFIED: TOLERANCES IN (INCHES) OR [mm] (MILLIMETERS) FRACTIONS: ± 1/64 DECIMALS: ± .015 ANGLE: ± 1/2°		DRAWING TITLE:	CONTINUOUSLY VARIABLE COAXIAL ATTENUATOR	
DRAWN: Paiboon Luekhamhan		DATE: 06-07-2005	PART NO. CVA25-10/NF/30	
APPROVED: T. Nguyen		DATE: 06-07-2005	CAGE CODE: 0D2L5	SIZE: A REV: N/A DWG NO. 82353
THIRD ANGLE PROJECTION		DO NOT SCALE THE DRAWING		

