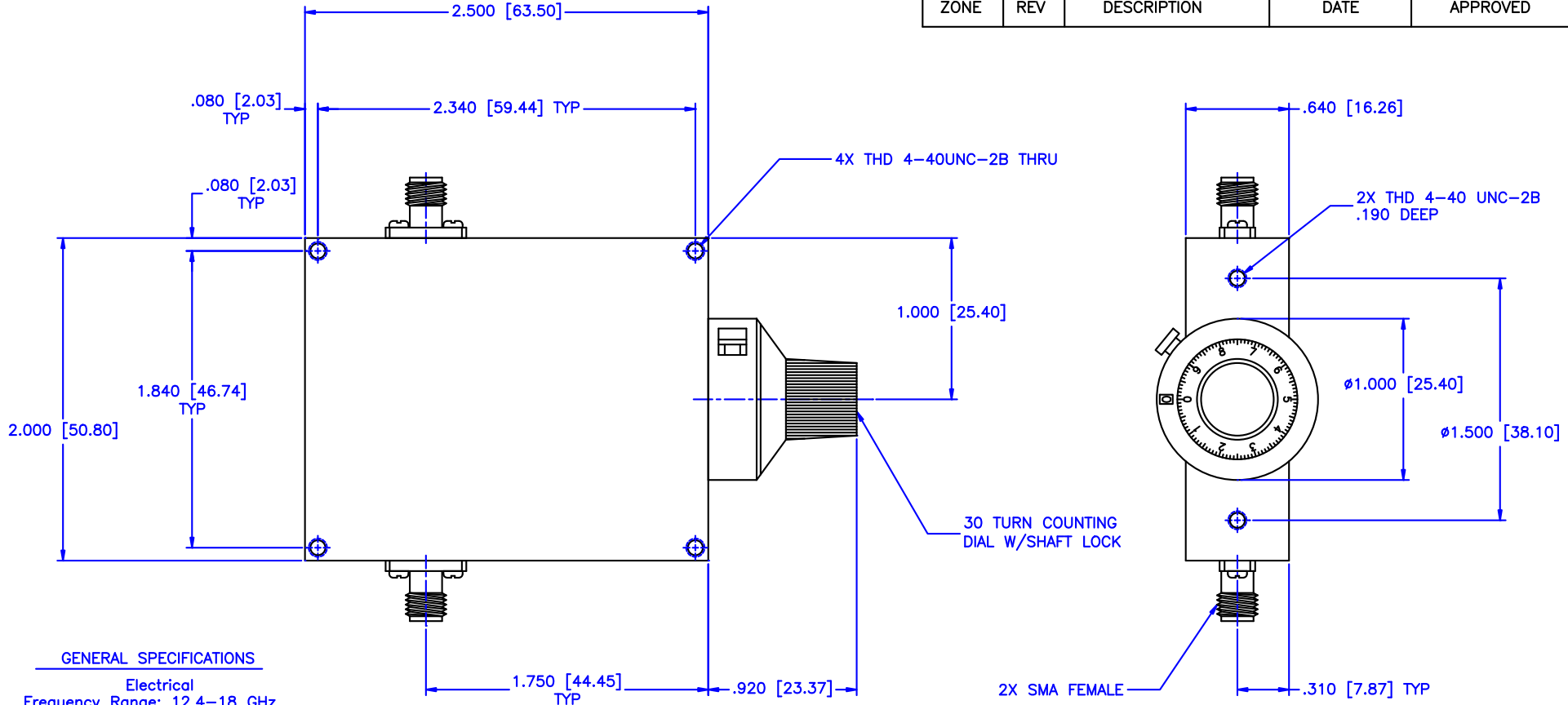


| REVISIONS |     |             |      |          |
|-----------|-----|-------------|------|----------|
| ZONE      | REV | DESCRIPTION | DATE | APPROVED |



**GENERAL SPECIFICATIONS**

**Electrical**  
 Frequency Range: 12.4–18 GHz  
 Attenuation: 20dB  
 Flatness: ±1.0dB  
 VSWR: 1.50:1 Max.  
 Insertion Loss per Frequency Band  
 to 18 GHz: 0.5dB max.  
 to 26 GHz: 0.75dB max.  
 to 40 GHz: 1.50dB max.  
 RF Power: 7W average, 3kW peak

**Mechanical**  
 Body: Aluminum  
 Connectors: Stainless Steel  
 Finish: Unique corrosion resistant 316 stainless steel epoxy coating IAW MIL-F-14072  
 Weight: 5.2oz / 150gm

**Environmental**  
 Operating Temperature: -55°C to +110 °C  
 Shock: 15 G's, 11ms, 1/2 sine  
 Vibration: 3 G's overall  
 Altitude: 40,000ft. Survival 25,000ft Operating

|  |                     |   |  |                  |
|--|---------------------|---|--|------------------|
| MATERIAL:  |                     | <b>MICROWAVE COMMUNICATIONS LABORATORIES INC.</b><br>7255 30TH AVE. N. SAINT PETERSBURG, FL 33710<br>TEL: (727) 344-6254 FAX: (727) 381-6116<br><a href="http://WWW.MCLI.COM">http://WWW.MCLI.COM</a> | SCALE:                                     | N/A              |
|  |                     |   | SHEET:                                     | N/A              |
| UNLESS OTHERWISE SPECIFIED:<br>TOLERANCES<br>IN (INCHES) OR [mm] (MILLIMETERS)<br>FRACTIONS: ± 1/64<br>DECIMALS: ±.01 ±.005<br>ANGLE: ±1/2°  |                     | DRAWING TITLE:  | CONTINUOUSLY VARIABLE ATTENUATOR WITH DIAL |                  |
| DRAWN:<br>Paiboon Luekhamhan   | DATE:<br>02-10-2011 | PART NO.<br>CA8-20/D  |  |                  |
| APPROVED:<br>T. Nguyen   | DATE:<br>02-10-2011 | CAGE CODE:<br>OD2L5   | SIZE: A<br>REV: N/A                        | DWG NO.<br>85465 |
| PROPRIETARY NOTICE:<br>THE INFORMATION IN THIS DRAWING IS PROPRIETARY AND SHALL NOT BE USED OR DISCLOSED WITHOUT WRITTEN PERMISSION FROM MICROWAVE COMMUNICATIONS LABORATORIES INC. (MCLI) |                     | DO NOT SCALE THE DRAWING  |  |                  |