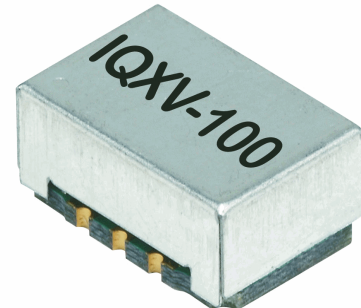




ISSUE 1; September 2014 - RoHS 2011/65/EU

Description

- Please note: This document is intended to illustrate the general capability and versatility of IQD's design. For specific enquiries please contact one of IQD's sales offices where we can tailor a unique specification to meet your needs.
Wide pulling ranges available.
Complementary output.
Enable/Disable function.



Frequency Parameters

- Frequency 1.0MHz to 800.0MHz
- Frequency Stability $\pm 15.00\text{ppm}$ to $\pm 100.00\text{ppm}$
- Nominal Frequency (f_0) reference:
Temperature = $25^\circ\text{C} \pm 3^\circ\text{C}$
Control Voltage = mid point
- Ageing (typical): $\pm 3\text{ppm}$ per year

Electrical Parameters

- Supply Voltage: Available in 5.0V and 3.3V
(Lower than 3.3V is available on request)
- Typical Supply Current Draw:
24.0MHz <25mA
800.0MHz <100mA

Frequency Adjustment

- Pulling ± 50 , ± 100 or $\pm 150\text{ppm}$

Operating Temperature Ranges

- -10 to 60°C
- -20 to 70°C
- -40 to 85°C

Output Details

- Output Compatibility LVPECL
- Drive Capability 50 Ω terminated to $V_s - 2V$
- Output Levels:
VoH $V_s - 1.025V$ min
VoL $V_s - 1.62V$ max

Output Control

- Enable/Disable Operation:
Logic '0' or no connection to pad 2 enables the oscillator output
Logic '1' to pad 2 disables the oscillator output
Or No connection

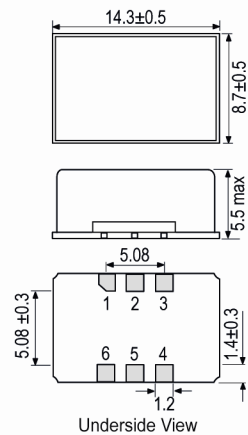
Noise Parameters

- Phase Jitter (RMS): 12kHz to 20MHz): 1.0ps max

Environmental Parameters

- Storage Temperature Range: -55 to 125°C
- Shock: MIL-STD-883C, Method 2002, Condition B
- Vibration: MIL-STD-883C, Method 2007, Condition A

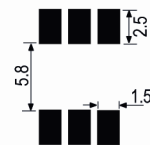
Outline (mm)



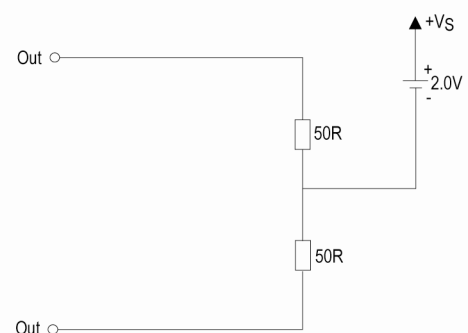
Pad Connections

1. N/C or Voltage Control
2. N/C or Enable/Disable
3. GND
4. Output
5. Complementary Output
6. +Vs

Solder Pad Layout



Test Circuit



Sales Office Contact Details:

UK: +44 (0)1460 270200

France: +33 (0)5 34 50 91 18

Email: info@iqdfrequencyproducts.com

Germany: +49 (0) 30 408 192 300

USA: +1 408.273.4530

Web: www.iqdfrequencyproducts.com



Ordering Information

- Minimum data needed to open an enquiry:-
Frequency
Model
Frequency Stability (over operating temperature range)
Operating Temperature Range
Pullability

Compliance

- RoHS Status Compliant
- REACH Status Compliant
- MSL Rating (JDEC-STD-033): 1

Packaging Details

- Pack Style: Reel Tape & reel in accordance with EIA-481-D
Pack Size: 600
- Pack Style: Bulk Supplied tube or box packaging
Pack Size: 1

Electrical Specification - maximum limiting values 0.0V

Frequency Min	Frequency Max	Temperature Range	Stability (min)	Current Draw	Rise & Fall (20 to 80%)	Duty Cycle
		°C	ppm	mA	ns	%
1.0MHz	800.0MHz	-10 to 60	±15.0	-	1	45/55
		-20 to 70	±20.0	-	1	45/55
		-40 to 85	±30.0	-	1	45/55

*This document was correct at the time of printing; please contact your local sales office for the latest version.
[Click to view latest version on our website.](#)*

Sales Office Contact Details:

UK: +44 (0)1460 270200

France: +33 (0)5 34 50 91 18

Email: info@iqdfrequencyproducts.com

Germany: +49 (0) 30 408 192 300

USA: +1 408.273.4530

Web: www.iqdfrequencyproducts.com