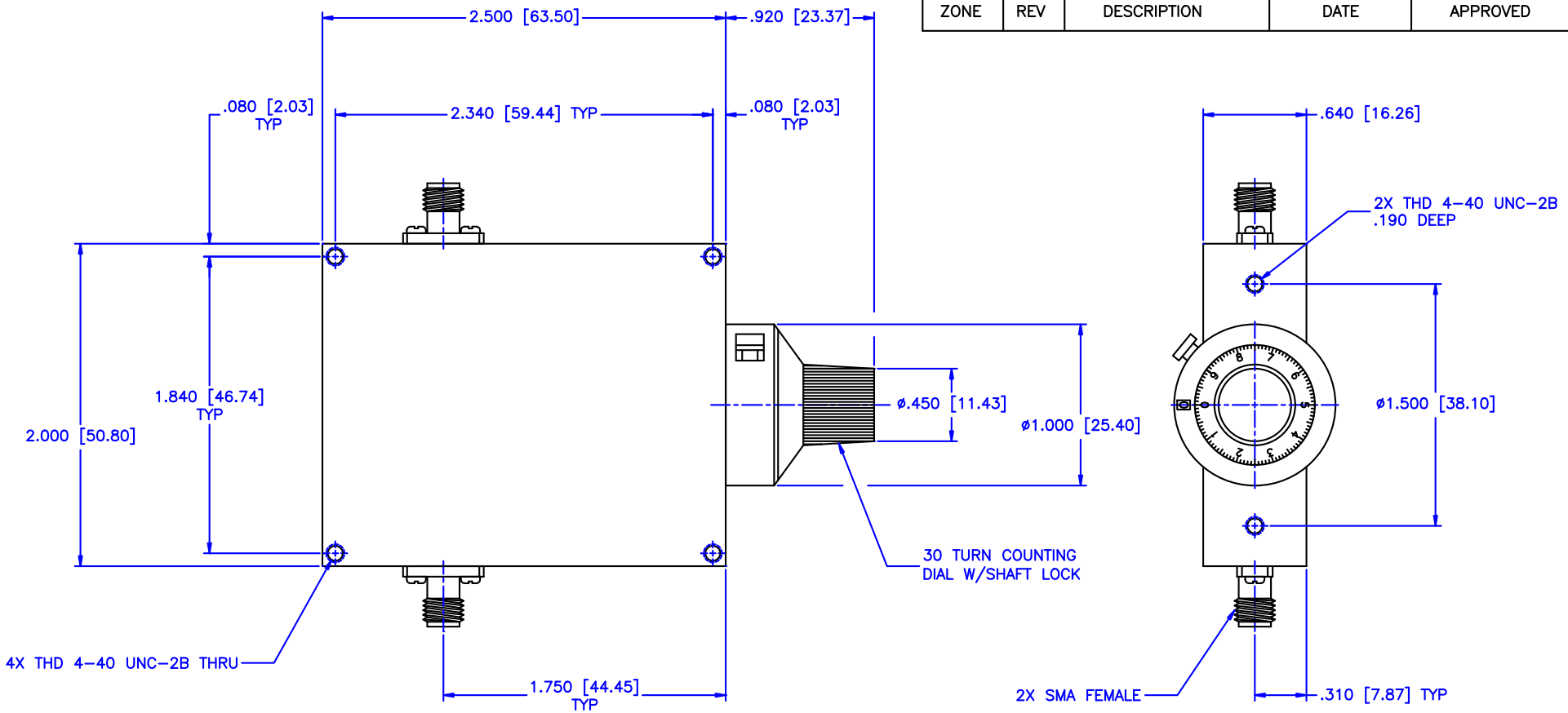


REVISIONS				
ZONE	REV	DESCRIPTION	DATE	APPROVED



Specifications:

Frequency Range: 1.7–2.7 GHz
 Attenuation: 40dB
 Insertion Loss: 0.5 Max.
 VSWR: 1.50:1
 RF Power: 7W Average, 3kW Peak

Environmental:

Temperature range: –55°C to +110°C
 Shock: 15 G's, 11mS, 1/2 sine
 Vibration: 3 G's overall
 Altitude: 40,000 ft. Survival 25,000ft Operating

MATERIAL:		 MICROWAVE COMMUNICATIONS LABORATORIES INC. 7255 30TH AVE. N. SAINT PETERSBURG, FL 33710 TEL: (727) 344-6254 FAX: (727) 381-6116 http://WWW.MCLI.COM	SCALE:		
			N/A		
		DRAWING TITLE:		CONTINUOUSLY VARIABLE ATTENUATOR WITH DIAL	
		PART NO.		CVA29-40/D	
DRAWN:		DATE:		CAGE CODE:	
Paiboon Luekhamhan		02-08-2011		OD2L5	
APPROVED:		DATE:		SIZE: A	
T. Nguyen		02-08-2011		REV: N/A	
		THIRD ANGLE PROJECTION		DWG NO.	
				85392	
				DO NOT SCALE THE DRAWING	