

# Low Pass Filter

## VLFX-400

50Ω DC to 400 MHz (40 dB Isolation up to 20 GHz)

### Maximum Ratings

Operating Temperature	-55°C to 100°C
Storage Temperature	-55°C to 100°C
RF Power Input*	10W max. at 25°C

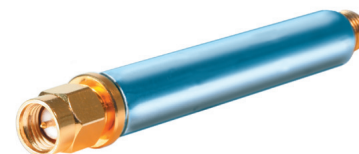
\*Passband rating, derate linearly to 3.5W at 100°C ambient. Permanent damage may occur if any of these limits are exceeded.

### Features

- very good isolation, 40 dB up to 20 GHz
- 21 sections
- excellent power handling, 10W
- temperature stable LTCC internal structure
- re-entry frequency > 20 GHz
- rugged unibody construction
- protected by US patent 6,943,646

### Applications

- harmonic rejection
- transmitters/receivers
- lab use
- test instrumentation



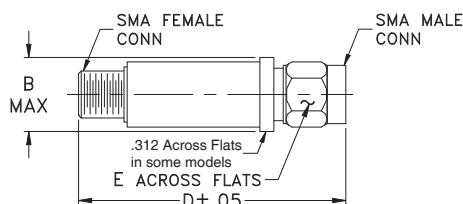
CASE STYLE: FF1118

Connectors	Model	Price	Qty.
SMA	VLFX-400	\$39.95 ea.	(1-9)

**+RoHS Compliant**

The +Suffix identifies RoHS Compliance. See our web site for RoHS Compliance methodologies and qualifications

### Outline Drawing



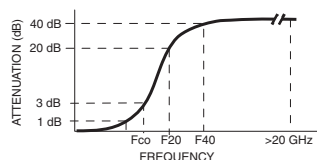
### Outline Dimensions (inch mm)

B	D	E	wt. grams
.410	2.67	.312	17.0
10.41	67.82	7.92	

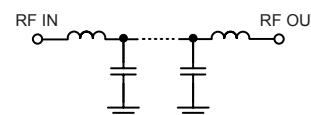
### Low Pass Filter Electrical Specifications @ 25°C

MODEL NO.	PASSBAND (MHz) (Loss < 1.2dB Max.)	Fco, MHz Nom (Loss 3 dB Typ)	STOPBAND (MHz) (Loss, dB)		VSWR (:1)		NO. OF SECTIONS
			F20 Min.	F40 Typ.	Stopband Typ.	Passband Typ.	
VLFX-400	DC-400	540	670	700-20000	10	1.15	21

### Typical Frequency Response

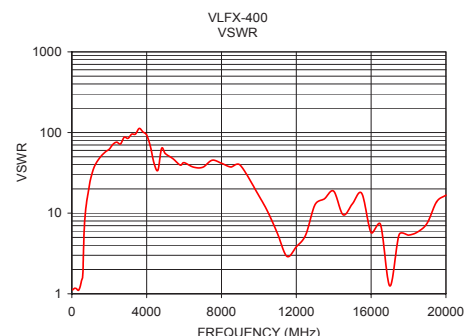
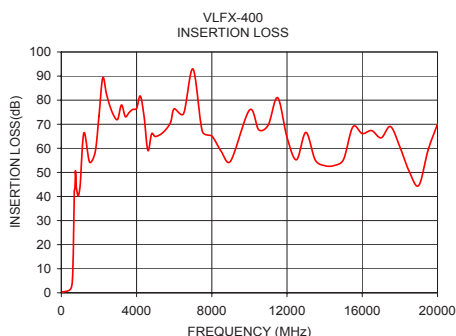


### Functional Schematic



### Typical Performance Data @ 25°C

Frequency (MHz)	Insertion Loss (dB)	VSWR (:1)
50	0.22	1.12
100	0.38	1.15
200	0.55	1.17
400	0.97	1.15
450	1.23	1.24
500	1.67	1.39
540	2.42	1.51
600	6.73	2.09
670	32.49	6.86
700	42.85	8.74
800	43.74	14.22
1000	44.36	26.35
3000	72.09	84.69
5000	64.87	54.70
7500	67.01	45.36
10000	75.88	16.45
12500	55.24	5.36
15000	55.32	13.07
17500	69.03	5.42
20000	70.03	16.72



**Mini-Circuits**  
ISO 9001 ISO 14001 AS 9100 CERTIFIED  
P.O. Box 350166, Brooklyn, New York 11235-0003 (718) 934-4500 Fax (718) 332-4661 The Design Engineers Search Engine Provides ACTUAL Data Instantly at [minicircuits.com](http://minicircuits.com)  
IF/RF MICROWAVE COMPONENTS

For detailed performance specs & shopping online see web site

REV. B  
M131810  
VLFX-400  
EDU-0399  
ED-11930A/3  
URJ/AD/CP  
130319  
Page 1 of 1

Notes: 1. Performance and quality attributes and conditions not expressly stated in this specification sheet are intended to be excluded and do not form a part of this specification sheet. 2. Electrical specifications and performance data contained herein are based on Mini-Circuit's applicable established test performance criteria and measurement instructions. 3. The parts covered by this specification sheet are subject to Mini-Circuit's standard limited warranty and terms and conditions (collectively, "Standard Terms"); Purchasers of this part are entitled to the rights and benefits contained therein. For a full statement of the Standard Terms and the exclusive rights and remedies thereunder, please visit Mini-Circuit's website at [www.minicircuits.com/MCLStore/terms.jsp](http://www.minicircuits.com/MCLStore/terms.jsp).