

Passband 1: DC to 1000 MHz

Diplexer (LP/HP)

Passband 1 Isolation: 75 dB

Passband 2: 1300 to 15000 MHz

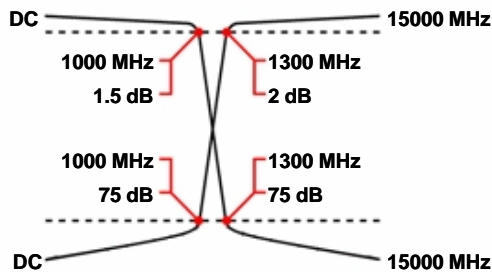
WDK11+10-DC-1000/1300-15000-75

Passband 2 Isolation: 75 dB

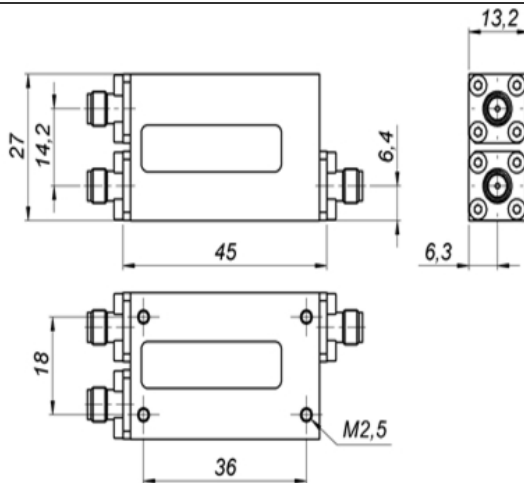
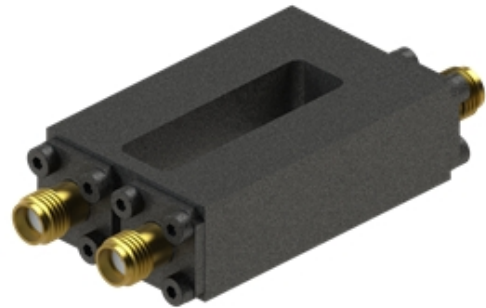
Specifications

	Band 1 (Lowpass)	Band 2 (Highpass)
Passbands:	DC to 1000 MHz	1300 to 15000 MHz
Passband Insertion Loss:	1.5 dB max.	2 dB max.
Passband Return Loss:	12 dB min.	12 dB min.
Stopbands:	1300-15000 MHz	DC-1000 MHz
Stopband Attenuation:	75 dB min.	75 dB min.
Operating Temperature:	15 °C to 45 °C	
Power Handling:	max. 1 W CW into a 2:1 VSWR (Please see our warranty in this regard)	
Dimensions (L x W x H):	45 x 27 x 13.2 mm (plus connectors)	
Approx. Weight:	0.07 kg	
Mounting Provision:	4 x M2.5 threaded holes in base	
Connector Common:	- Please choose -	
Connector Band 1:	- Please choose -	
Connector Band 2:	- Please choose -	

Typical Performance



11+10 Section LC Design



©2015 Wainwright Instruments. All rights reserved.

Euro Prices

(USD Prices will be quoted for US-based customers only)

1 - 4 pcs:	€ 1180
5 - 9 pcs:	€ 1062
10 - 24 pcs:	€ 956

Delivery Terms

FCA Andechs (free carrier) according to **Incoterms 2010**
 In Deutschland liefern wir frachtfrei gemäß CPT **Incoterms 2010** (unversichert).
 Regarding payment terms and warranty see [Terms and Conditions](#).
Delivery time: normally 3 to 4 weeks - depending on quantity ordered and on our work load.

Customer is responsible for observing all applicable export laws in regard to filter application and location of end user



Wainwright Instruments GmbH
 www.wainwright-filters.com

Tel: +49 8152 918230
 Fax: +49 8152 918255
 info@wainwright-filters.com