

Waveguide Isolators

Part Number: KTWI84-36

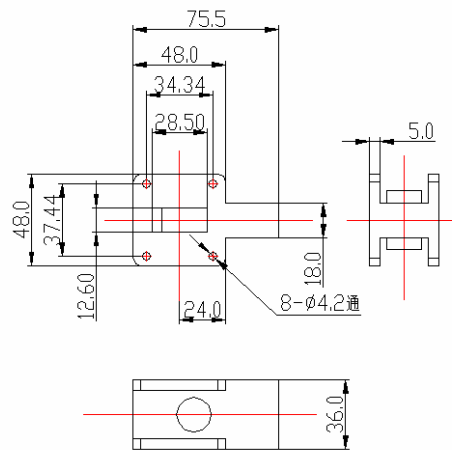
Main Features:

- Broad Frequency Range: 6.57GHz - 9.99GHz
- High Isolation, Low Insertion Loss, Small Size
- Wide Operating Temperature Range: -40°C ~ +80°C
- Commercial, Military and Space Applications

Electrical Specifications at Room Temperature:

Part Number	Freq. Range (GHz)	Bandwidth Max. (MHz)	Insertion Loss Max. (dB)	Isolation Min. (dB)	VSWR Max.	Waveguide Type
KTWI84-36	6.57 - 9.99	500	0.3	23	1.20	WR112
KTWI84-36	6.57 - 9.99	1000	0.4	20	1.25	WR112

Mechanical Dimensions (mm):



HOW TO ORDER

