

Passband 1: DC to 180 MHz

Passband 2: 260 to 1000 MHz

# Diplexer (LP/HP) WDG5+5-DC-180/260-1000-40

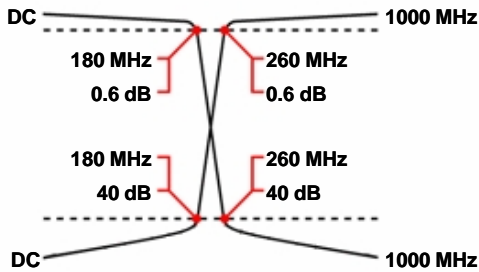
Passband 1 Isolation: 40 dB

Passband 2 Isolation: 40 dB

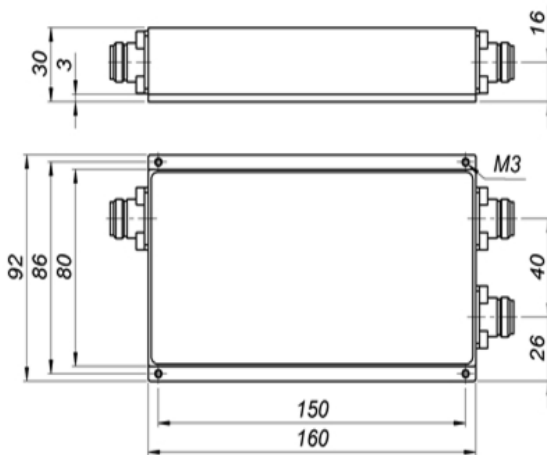
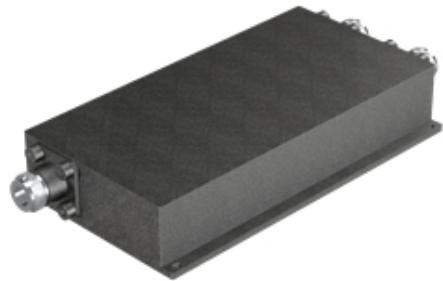
## Specifications

	Band 1 (Lowpass)	Band 2 (Highpass)
Passbands:	DC to 180 MHz	260 to 1000 MHz
Passband Insertion Loss:	0.6 dB max.	0.6 dB max.
Passband Return Loss:	17 dB min.	17 dB min.
Stopbands:	260-1000 MHz	DC-180 MHz
Stopband Attenuation:	40 dB min.	40 dB min.
Operating Temperature:	15 °C to 45 °C	
Power Handling:	max. 300 W CW into a 2:1 VSWR (Please see our <u>warranty</u> in this regard)	
Dimensions (L x W x H):	160 x 80 x 30 mm (plus connectors and flanges)	
Approx. Weight:	0.8 kg	
Mounting Provision:	6 mm flanges on both ends	
Connector Common:	- Please choose -	
Connector Band 1:	- Please choose -	
Connector Band 2:	- Please choose -	

## Typical Performance



## 5+5 Section LC Design



©2015 Wainwright Instruments. All rights reserved.

## Euro Prices

(USD Prices will be quoted for US-based customers only)

1 - 4 pcs:	€ 1339
5 - 9 pcs:	€ 1205
10 - 24 pcs:	€ 1085

## Delivery Terms

FCA Andechs (free carrier) according to **Incoterms 2010**  
 In Deutschland liefern wir frachtfrei gemäß CPT **Incoterms 2010** (unversichert).  
 Regarding payment terms and warranty see [Terms and Conditions](#).  
**Delivery time:** normally 3 to 4 weeks - depending on quantity ordered and on our work load.

Customer is responsible for observing all applicable export laws in regard to filter application and location of end user



**Wainwright Instruments GmbH**  
 www.wainwright-filters.com

Tel: +49 8152 918230  
 Fax: +49 8152 918255  
 info@wainwright-filters.com