

WAVEGUIDE ADAPTER WR19-1.85mm/F 40-60GHZ

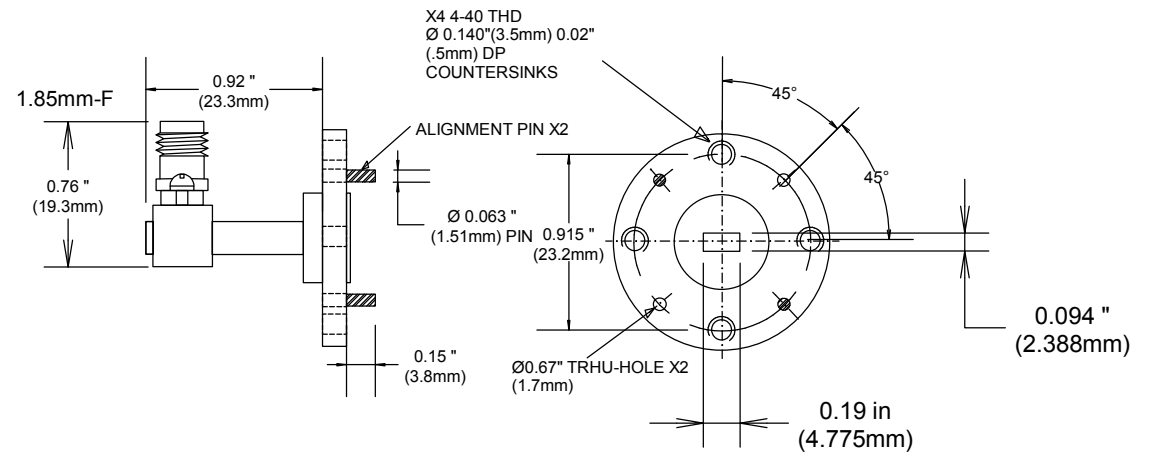
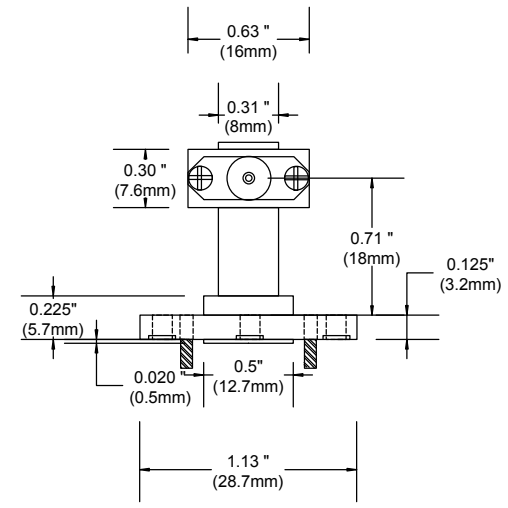
19AC206

SPECIFICATIONS

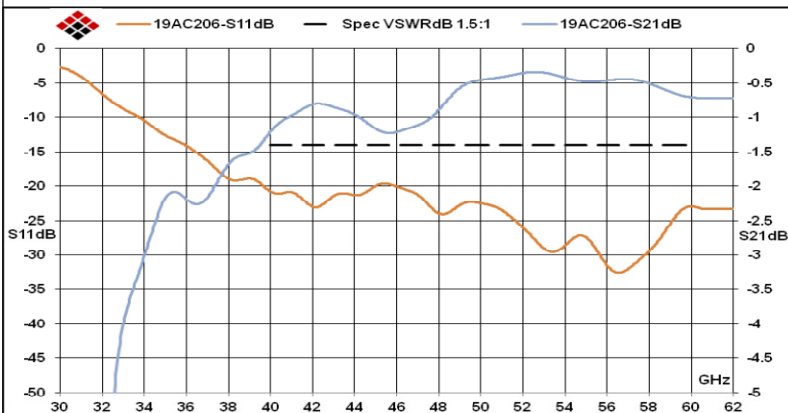
ELECTRICAL:
 FREQUENCY: 40-60 GHZ
 1.85mm-F INTERFACE
 VSWR: 1.5:1 MAX

MECHANICAL:
 HOUSING FLANGE AND WAVEGUIDE Au PLATED
 FEMALE CONTACT: BeCu PER ASTM-B-196
 CONTACT PLATING: Au PER MIL-G-45204
 INTERFACE MIL-STD-348A
 FLANGE WR19

ROHS COMPLIANT



MEASUREMENTS BELOW ARE TYPICAL



ALL DIMENSIONS IN inches(mm) Typical

FAIRVIEW MICROWAVE INC.				
ALLEN, TX 75013 WWW.FAIRVIEWMICROWAVE.COM				
TITLE WG ADAPTER WR19-1.85mm/F 40-60GHZ				
SIZE A	CAGE CODE 3FKR5	DWG NO 19AC206	REV A	
SCALE			SHEET	