

PART NO.	FREQ. (GHz)	W/G SIZE	DIM. A
WD1	1.12-1.7	WR430	7.5
WD2	1.7-2.6	WR340	7.5
WD3	2.6-3.95	WR284	7.5
WD4	3.3-4.9	WR229	7.0
WD5	3.95-5.85	WR187	6.5
WD6	4.9-7.05	WR159	6.0
WD7	5.85-8.2	WR137	6.0
WD8	7.05-10	WR112	4.2
WD9	8.2-12.4	WR90	4.0
WD10	10-15	WR75	3.75
WD11	12.4-18	WR62	3.5
WD12	15-22	WR51	3.1
WD13	18-26.5	WR42	2.2
WD14	22-33	WR34	2.2
WD15	26.5-40	WR28	2.0

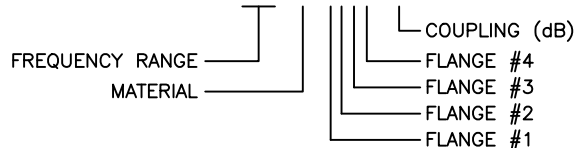
GENERAL SPECIFICATIONS

Coupling: 30dB, 40dB, or 50dB
 Nominal Coupling: +/- 0.5dB
 Frequency Sensitivity: +/- 1.00dB max.
 Directivity: 20dB min.
 VSWR Waveguide: 1.05 max.

Mechanical

Construction: -A = Aluminum, -B = Brass-Copper
 Pressure: 10psi WR28 thru WR430
 Flange Type: Multiple Type Available, See Table
 Finishing: Corrosion resistant 316 stainless steel epoxy coating

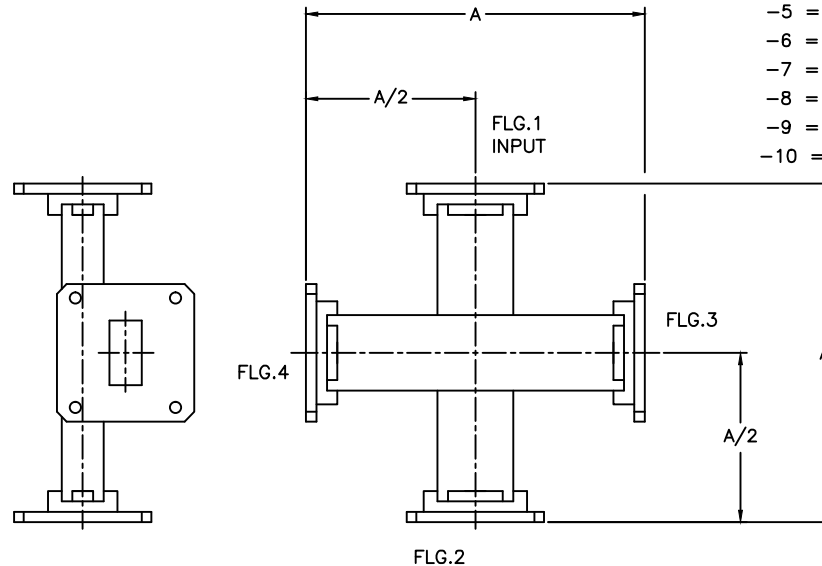
EXAMPLE PART NUMBER: WD3-A-6666-30



REVISIONS				
ZONE	REV	DESCRIPTION	Date	APPROVED

F = FLANGE TYPES

- 1 = CPRG
- 2 = CPRF
- 3 = CMR STANDARD
- 4 = CMR THRU
- 5 = CMR TAP
- 6 = UG-COVER
- 7 = UG-CHOKE
- 8 = UG-COVER/GROOVE
- 9 = PDR
- 10 = UDR



MATERIAL:		MICROWAVE COMMUNICATIONS LABORATORIES INC. 7255 30TH AVE. N. SAINT PETERSBURG, FL 33710 TEL: (727) 344-6254 FAX: (727) 381-6116 http://WWW.MCLI.COM	SCALE:	N/A
UNLESS OTHERWISE SPECIFIED: TOLERANCES IN (INCHES) OR [mm] (MILLIMETERS) FRACTIONS: ± 1/64 DECIMALS: ± .01 ± .005 ANGLE: ± 1/2°			SHEET:	N/A
DRAWING TITLE:		CROSSGUIDE DIRECTIONAL COUPLER, 4 WAVEGUIDE PORTS		
PART NO.:		WD1 to WD15		
DRAWN:	DATE:	PROPRIETARY NOTICE: THE INFORMATION IN THIS DRAWING IS PROPRIETARY AND SHALL NOT BE USED OR DISCLOSED WITHOUT WRITTEN PERMISSION FROM MICROWAVE COMMUNICATIONS LABORATORIES INC. (MCLI)	CAGE CODE:	SIZE:
APPROVED:	DATE:		OD2L5	A
		DO NOT SCALE THE DRAWING	DWG. NO.:	84978