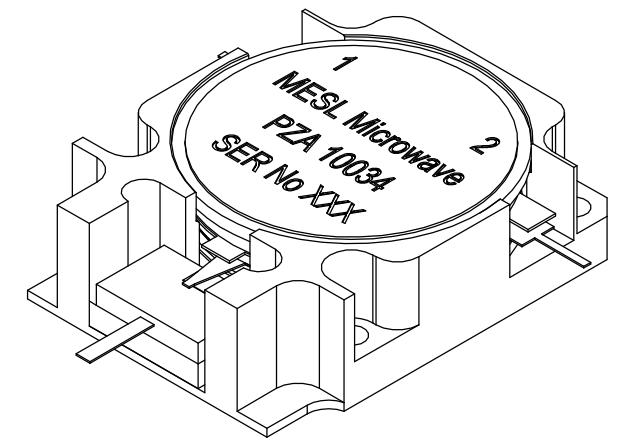
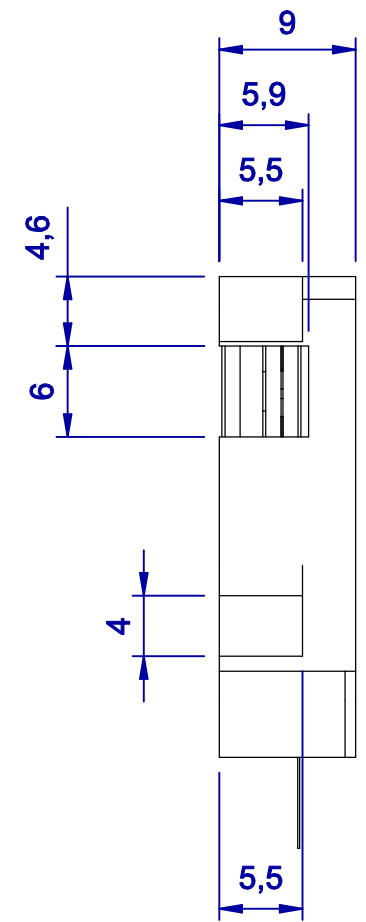
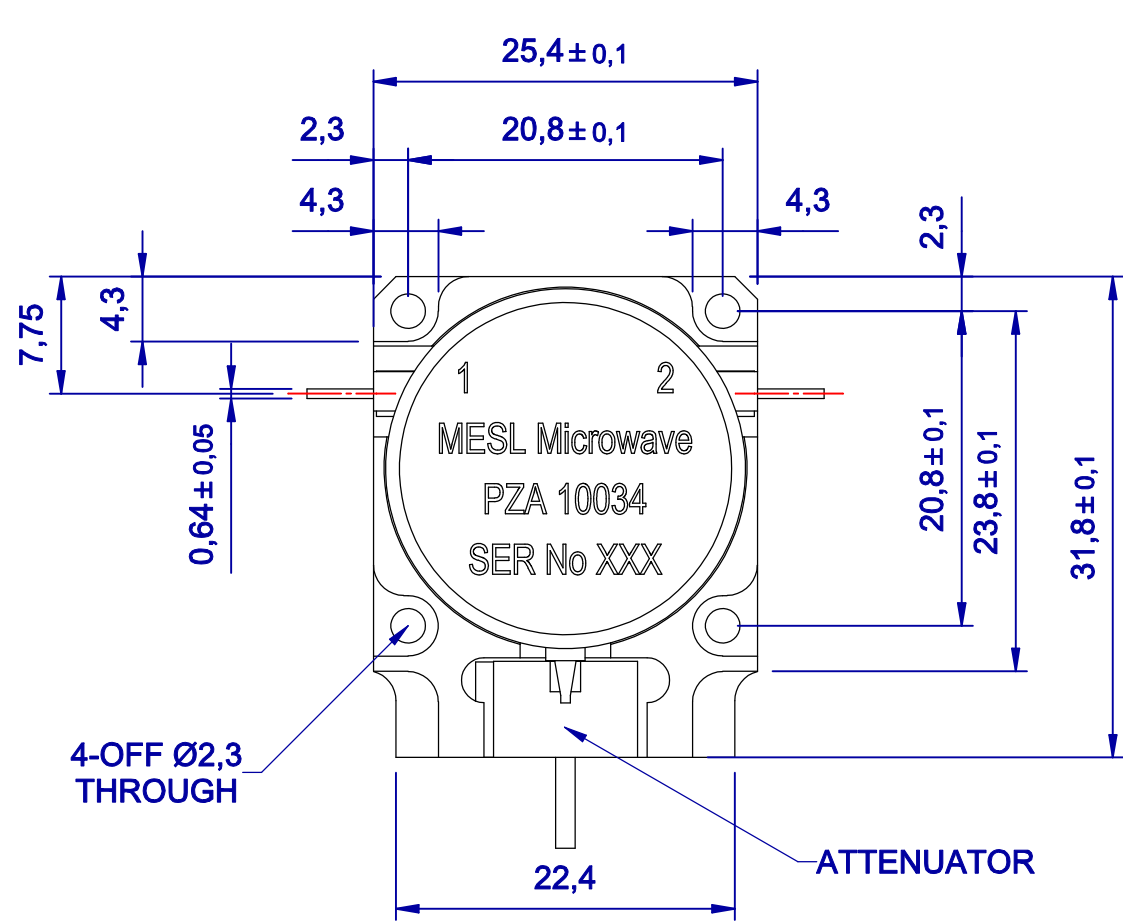


|                         |  |   |                           |
|-------------------------|--|---|---------------------------|
| SERVICE DRAWING NUMBER  | 3rd ANGLE PROJECTION                           | THIS DRAWING IS MESL Microwave Ltd. PROPERTY. IT MAY NOT BE COPIED OR EXHIBITED WITHOUT WRITTEN PERMISSION. | <b>MESL Microwave Ltd</b> |
| SECURITY CLASSIFICATION | DRAWING TO BE READ IN CONJUNCTION WITH BS 8888 |   |                           |



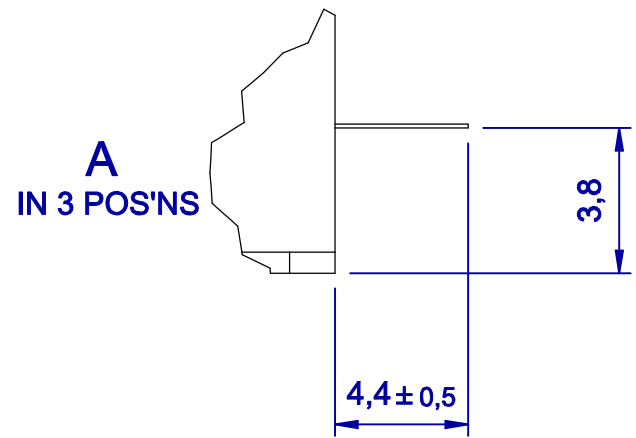
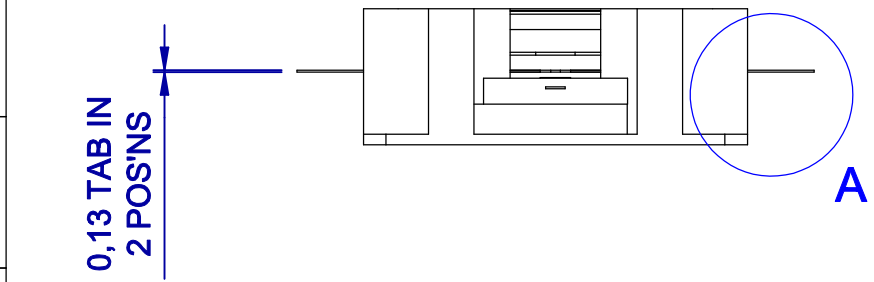
**ELECTRICAL SPECIFICATIONS:**

Frequency Range: 815 To 894MHz  
 Insertion Loss: 0.3dB max  
 Return Loss INPUT/OUTPUT: 20dB max  
 Isolation: 20dB min  
 Operating Temperature: -40°C to +85°C  
 Attenuator: 30dB ±1dB.  
 IMD. Two Carriers of 41dBm @ 1MHz spacing  
 >80dBc @ 25°C Anywhere in the Frequency Band.

**NOTES:**

1. THIS UNIT IS ROHS COMPLIANT BY DESIGN.

|            |
|------------|
| Q.A.       |
| DATE       |
| PROD.REL.  |
| DATE       |
| ENG.APP.   |
| J.G.       |
| DATE       |
| 19/02/2008 |
| MECH. ENG. |
| DATE       |
| 14.11.07   |



LIGHTLY REMOVE ALL BURRS AND SHARP EDGES U.O.S.

|                    |     |                     |               |
|--------------------|-----|---------------------|---------------|
| ORIGINAL SCALE     | 2:1 | MATERIAL            | SPECIFICATION |
| DO NOT SCALE PRINT |     |                     |               |
| DIMENSION IN       | mm  | FINISH              | SPECIFICATION |
| CERTIFIED AT ISSUE |     | BODY: SILVER PLATED |               |

| REF                                       | DESCRIPTION | No OFF  | CHAR. | POS.TOL.                   | ISSUE | DATE       | MOD NUMBER |
|---|-------------|---|-------|----------------------------|-------|------------|------------|
| <b>GREEN (Fully Released)</b>             |             |   |       |                            |       |            | A 3        |
| GENERAL TOLERANCE UNLESS OTHERWISE STATED |             | CONTRACTOR  |       | SECURITY CLASSIFICATION    |       |            |            |
| ISO 2768-fH Symmetry ± 0,05               |             | MESL Microwave Ltd                                |       |                            |       |            |            |
| FINISH TO BE                              |             | RESPONSIBLE AUTHORITY                             |       | CONTRACTORS DRAWING NUMBER |       |            |            |
| UNLESS OTHERWISE STATED                   |             | J. Gillies  |       | 10034-000-OL               |       |            |            |
| 1.6                                       |             | TITLE   |       | SERVICE DRAWING NUMBER     |       | SHEET      |            |
|   |             | PZA 10034 900MHz DROP-IN ISOLATOR WITH ATTENUATOR |       |                            |       | No 1 OFF 1 |            |

A  
B  
C  
D  
E