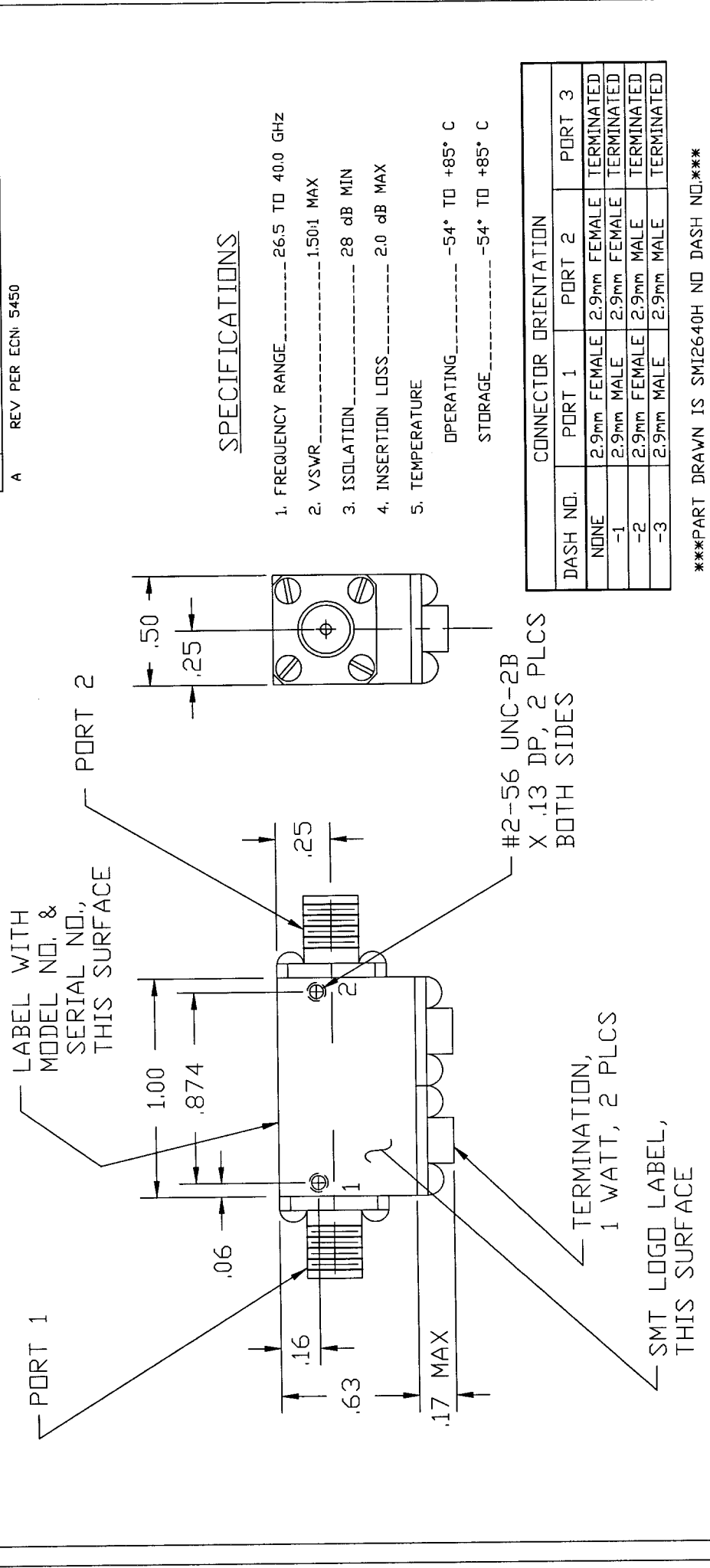


REVISIONS		
REV.	DESCRIPTION	DATE
NC	INITIAL RELEASE	
A	REV PER ECN: 5450	



**SPECIFICATIONS**

1. FREQUENCY RANGE----- 26.5 TO 40.0 GHZ
2. VSWR----- 1.50:1 MAX
3. ISOLATION----- 28 dB MIN
4. INSERTION LOSS----- 2.0 dB MAX
5. TEMPERATURE  
 OPERATING----- -54\* TO +85\* C  
 STORAGE----- -54\* TO +85\* C

CONNECTOR ORIENTATION			
DASH NO.	PORT 1	PORT 2	PORT 3
NONE	2.9mm FEMALE	2.9mm FEMALE	TERMINATED
-1	2.9mm MALE	2.9mm FEMALE	TERMINATED
-2	2.9mm FEMALE	2.9mm MALE	TERMINATED
-3	2.9mm MALE	2.9mm MALE	TERMINATED

\*\*\*PART DRAWN IS SMI2640H NO DASH NO.\*\*\*

QTY	FSCM RECD. NO.	PART OR IDENTIFYING NO.	NOMENCLATURE OR DESCRIPTION	MATERIAL SPECIFICATION
PARTS LIST				
FRACTIONS DECIMALS ANGLES ± .xxx± .02 ± .xxx± .010		APPROVALS	DATE	
MATERIAL		DRAWN		
FINISH		CHECKED		
NEXT ASSY		ISSUED		
204-0277-001		SIERRA MICROWAVE TECHNOLOGY		
SMI2640H-		OUTLINE FOR SMI2640H-		
USED ON		SIZE	FSCM NO.	DRG. NO.
APPLICATION		B	1CY63	205-1986-001
		SCALE		SHEET