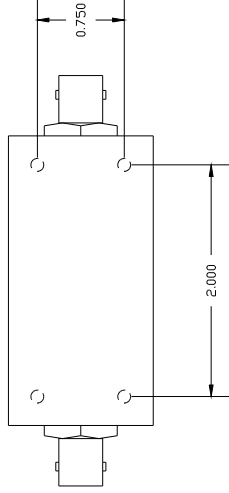
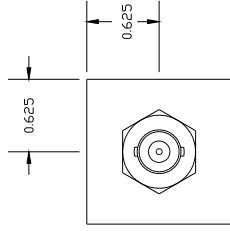
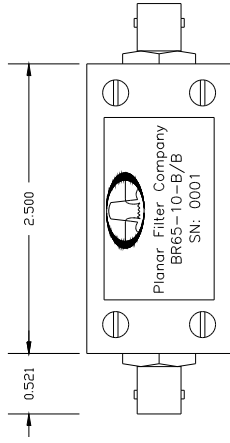
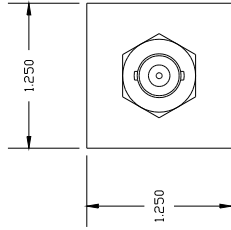


REVISIONS		
ZONE	REV.	DATE
	-	8/18/99

SPECIFICATIONS:

- BANDREJECT FILTER
- CENTER OF NOTCH: 65 MHz
- PASSBAND: 30 TO 1000 MHz
- 3dB BANDWIDTH: 9 MHz
- REJECTION: @ 61 MHz < -30dB
- REJECTION: @ 69 MHz < -30dB
- PASSBAND RIPPLE: 0.25 dB
- INPUT VSWR: 2.1:1
- INPUT/OUTPUT: 50 OHMS
IMPEDANCE
- INSERTION LOSS: <1.5 dB
- INPUT POWER: 5 WATTS
- SIZE 2.500(L) x 1.250(W) x 1.250(H) EXCLUDING CONNECTORS
- WEIGHT 3.7 OZ. TYP.



ALL DIMENSIONS ARE IN INCHES
TOLERANCES: ±0.010
 ±0.005

NOTE: THE ABOVE SPECIFICATIONS ARE SUBJECT TO CHANGE OR REVISION

PART NO.		APPROVALS		DATE
		F. HOYDS		9/21/99
		CHECKED		
		ISSUED		

PLANAR FILTER COMPANY 7311G GROVE RD., FREDERICK, MARYLAND		TITLE	
		OUTLINE DRAWING BR65-10-B/B	
SIZE	FSCM NO.	DWG. NO.	REV.
A	OZZX8	HOUSING	-
SCALE N/A		SHEET 1 OF 1	