

Features

- Frequency Range: 20~200MHz
- Active Bias Design Supply Temperature Compensation
- Standard Hermetic Package SP-1A
- Operating Temperature Range: -55°C~+85°C

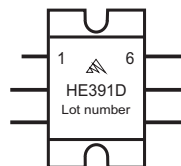
Electrical (50 Ω, V_{cc}=+15V, T_A=-55°C~+85°C)

Parameter	Symbol	Unit	Guaranteed	Typical
Frequency Range	f _L ~f _H	MHz	20~200	--
Gain	G _p	dB	≥10.0	11.0
Gain Flatness	Δ G _p	dB	≤1.0 Δ	0.6
Noise Figure	F _n	dB	≤6.0 Δ	4.5
Input VSWR	VSWR _{io}	--	≤2.0:1 Δ	1.7:1
Output VSWR	VSWR _o	--	≤2.0:1 Δ	1.7:1
For 1dB Compression	P ₋₁	dBm	≥25.0* Δ	26.0
Supply Current	I _{cc}	mA	--	160

Note: “*” f=400 MHz. “Δ” T_A=24±1°C.

Maximum Ratings

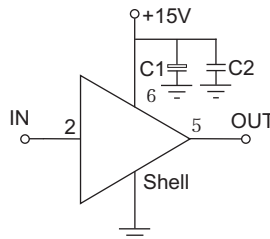
- Power supply: +16V_{DC}
- RF input: +10dBm
- Storage Temp: +125°C



SP-1A

Application Notes

1. Typical application shown as right, C₁=3.3~22 μF ; C₂=3300~6800pF;
2. Pay attention to heat dispersion.
3. Connectorized package (SMA-3) available.
4. See assembly section for outline and mounting information.



Typical Curves

