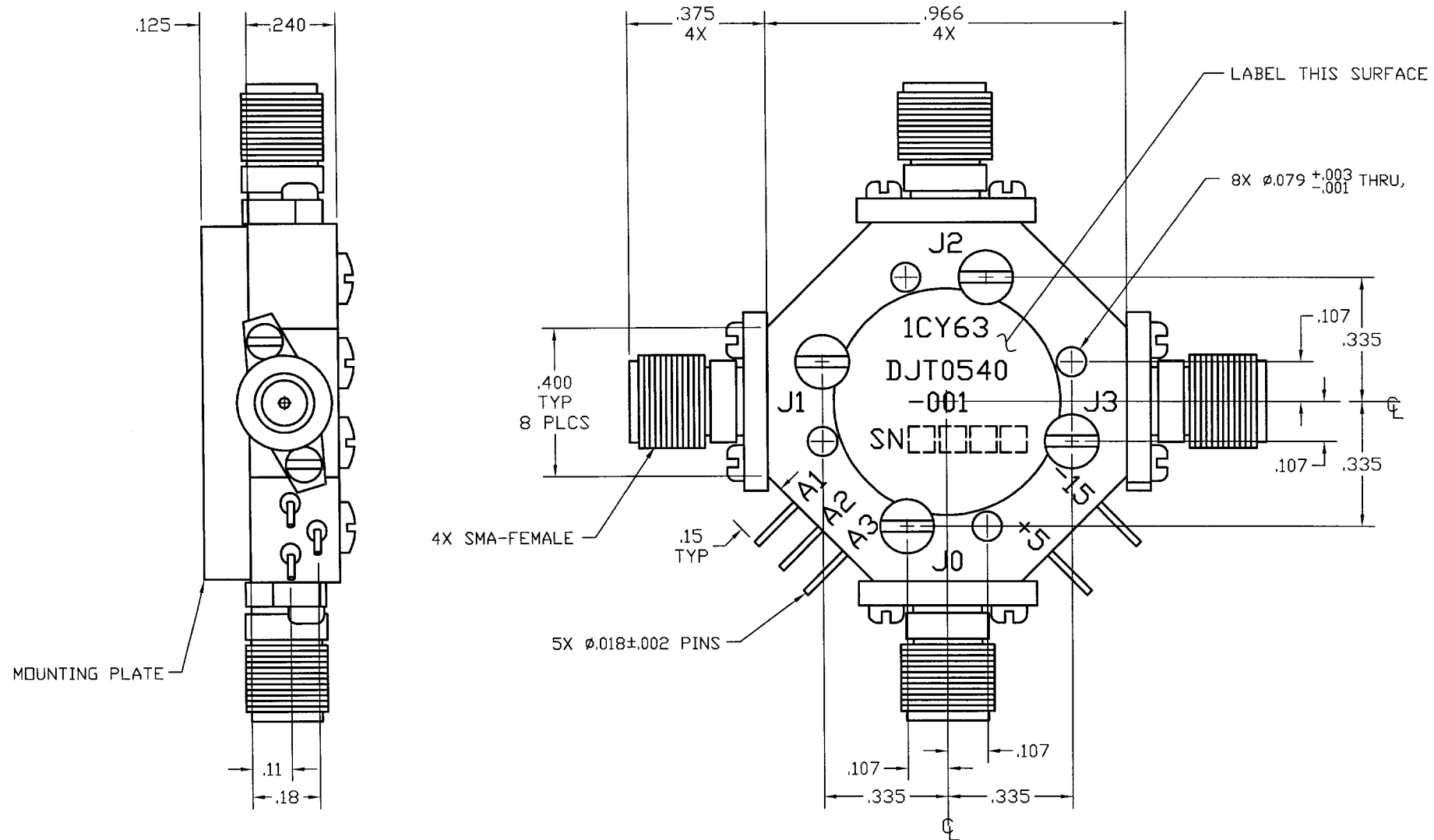


**COMPUTER GENERATED DRAWING
MANUAL CHANGES NOT AUTHORIZED**


REVISIONS

REV.	DESCRIPTION	DATE	RELEASED BY
NC	INITIAL RELEASE	5-09-05	R.J3



SPECIFICATIONS:

FREQUENCY:	0.5 - 4.0 GHz
INSERTION LOSS:	1.4 dB MAX
VSWR:	2.0:1 MAX
ISOLATION:	60 dB MIN
SWITCHING SPEED:	75nSEC
CONTROL:	
	TTL LOW - INSERTION LOSS
	TTL HI - ISOLATION
TEMPERATURE:	
OPERATING:	-54° TO +100° C
STORAGE:	-54° TO +100° C
BIAS CONDITIONS:	+5V @ 100 mA MAX
	-15V @ 50 mA MAX

ITEM	QTY REQ'D	FSCM NO.	PART OR IDENTIFICATION NO.	NOMENCLATURE OR DESCRIPTION				MATERIAL SPECIFICATION						
PARTS LIST														
UNLESS OTHERWISE SPECIFIED DIMENSIONS ARE IN INCHES TOLERANCES ARE: FRACTIONS DECIMALS ANGLES ± .XX± .02 ± .XXX± .010			CONTRACT NO.		<div> SIERRA MICROWAVE TECHNOLOGY</div>									
			APPROVALS								DATE			
MATERIAL:			DRAWN:		DS RENFROW		4-07-05		TITLE: OUTLINE FOR DJT0540-001					
			CHECKED:											
			DESIGN ENG.											
FINISH:			MAT. & PROCESSES		SIZE		FSCM NO.				DWG NO.		REV	
			Q.A.											
DO NOT SCALE DRAWING					BRDR SCALE				SHEET		OF			