

ISOLATOR 26.5-40 GHZ

SFI2640

SPECIFICATIONS

ELECTRICAL

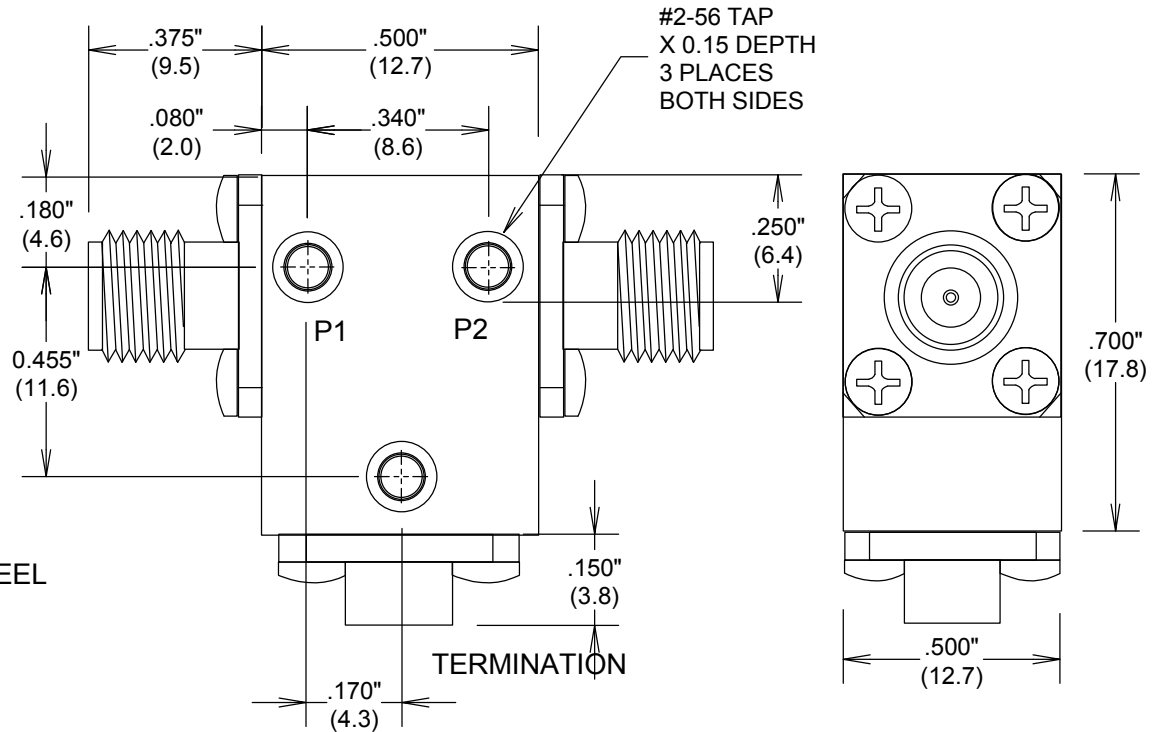
FREQUENCY: 26.5-40 GHZ
IMPEDANCE: 50 OHMS
VSWR: 1.45:1 TYP; 1.50:1 MAX
LOSS: 0.80 DB TYP; 1.00 DB MAX
POWER: AVG(P1 TO P2) :5W
REFLECTIVE POWER(TERM): 2W
PEAK: 30 W
ISOLATION: 15 DB TYP; 14 DB MIN

MECHANICAL

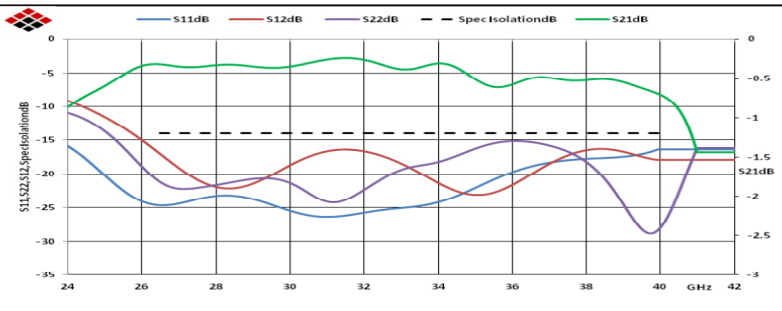
MATERIAL CONNECTORS: PASSIVATED STAINLESS STEEL
MATERIAL CONTACTS: BeCu
CONTACT PLATING: Au PER MIL-G-45204

-20°C TO +65°C

ROHS COMPLIANT



MEASUREMENTS BELOW ARE TYPICAL



FAIRVIEW MICROWAVE INC.

ALLEN, TX 75013 WWW.FAIRVIEWMICROWAVE.COM

TITLE

ISOLATOR 26.5-40 GHZ

SIZE

A

CAGE CODE

3FKR5

DWG NO

SFI2640

REV

A

SCALE

SHEET

ALL DIMENSIONS IN inches(MM) Typical