

Low Pass Filter

VLFX-450

50Ω DC to 450 MHz (40 dB Isolation up to 20 GHz)

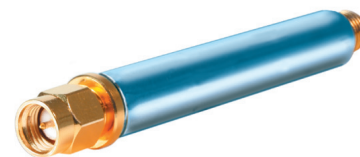
Maximum Ratings

Operating Temperature	-55°C to 100°C
Storage Temperature	-55°C to 100°C
RF Power Input*	10W max. at 25°C

*Passband rating, derate linearly to 3.5W at 100°C ambient. Permanent damage may occur if any of these limits are exceeded.

Features

- very good isolation, 40 dB up to 20 GHz
- 21 sections
- excellent power handling, 10W
- temperature stable LTCC internal structure
- re-entry frequency > 20 GHz
- rugged unibody construction
- protected by US patent 6,943,646



CASE STYLE: FF1118

Connectors	Model	Price	Qty.
SMA	VLFX-450	\$39.95 ea.	(1-9)

+RoHS Compliant

The +Suffix identifies RoHS Compliance. See our web site for RoHS Compliance methodologies and qualifications

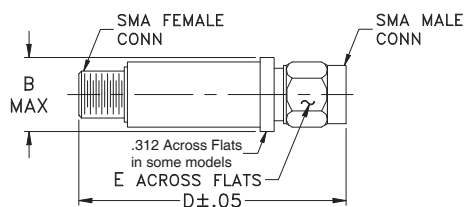
Applications

- harmonic rejection
- transmitters/receivers
- lab use
- test instrumentation

Low Pass Filter Electrical Specifications @ 25°C

MODEL NO.	PASSBAND (MHz) (Loss < 1.2dB) Max.	F _{co} , MHz Nom (Loss 3 dB) Typ	STOPBAND (MHz) (Loss, dB)		VSWR (:1)		NO. OF SECTIONS
			F20 Min.	F40 Typ.	Stopband Typ.	Passband Typ.	
VLFX-450	DC-450	640	800	900-20000	10	1.15	21

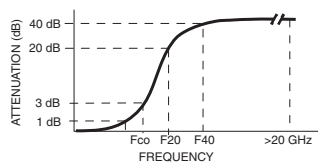
Outline Drawing



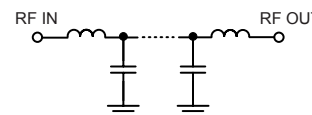
Outline Dimensions (inch/mm)

B	D	E	wt. grams
.410	2.67	.312	17.0
10.41	67.82	7.92	

Typical Frequency Response

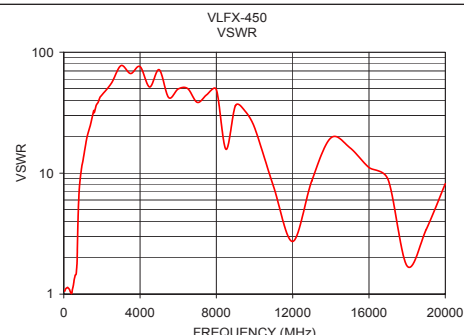
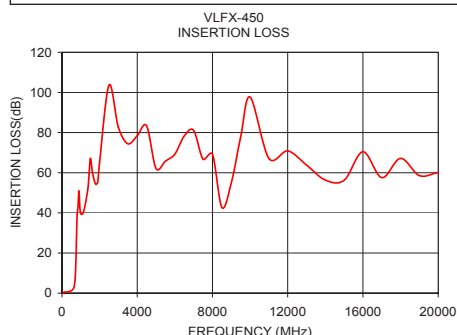


Functional Schematic



Typical Performance Data @ 25°C

Frequency (MHz)	Insertion Loss (dB)	VSWR (:1)
50	0.31	1.06
175	0.45	1.13
300	0.71	1.09
450	1.00	1.09
500	1.21	1.18
575	1.84	1.38
640	2.93	1.45
685	5.85	1.71
780	30.23	5.85
850	42.71	8.60
900	50.99	10.10
2000	65.26	44.38
4000	78.45	76.01
6000	69.29	49.69
8000	69.23	49.14
10000	97.72	23.84
12000	70.90	2.73
16000	70.44	11.13
18000	67.17	1.71
20000	60.16	8.17



For detailed performance specs & shopping online see web site

P.O. Box 350166, Brooklyn, New York 11235-0003 (718) 934-4500 Fax (718) 332-4661 The Design Engineers Search Engine



Provides ACTUAL Data Instantly at minicircuits.com

IF/RF MICROWAVE COMPONENTS

Notes: 1. Performance and quality attributes and conditions not expressly stated in this specification sheet are intended to be excluded and do not form a part of this specification sheet. 2. Electrical specifications and performance data contained herein are based on Mini-Circuit's applicable established test performance criteria and measurement instructions. 3. The parts covered by this specification sheet are subject to Mini-Circuits standard limited warranty and terms and conditions (collectively, "Standard Terms"); Purchasers of this part are entitled to the rights and benefits contained therein. For a full statement of the Standard Terms and the exclusive rights and remedies thereunder, please visit Mini-Circuits' website at www.minicircuits.com/MCLStore/terms.jsp.

REV. C
M131810
VLFX-450
EDU-0399
ED-11930A/6
URJ/AD/CP
130319
Page 1 of 1