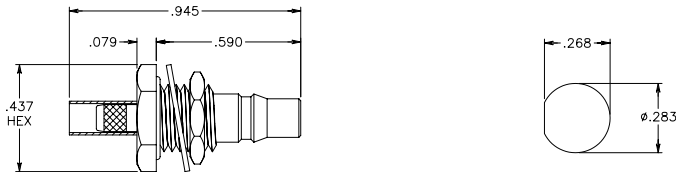


QMA CONNECTORS



*Add "NC" as a prefix to P/N to order W/Out Captivation.

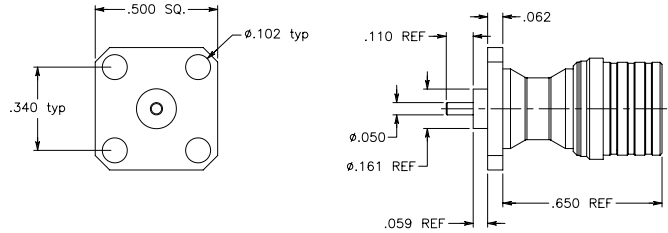
(QMA Jack Bulk Head) Crimp RG174, RG188 & RG316



PART #
QMA 9000-1001

Captive Contact

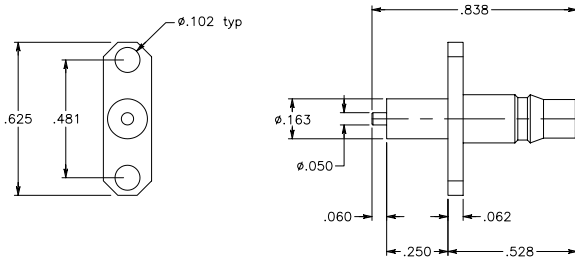
(QMA Plug) 4-Hole Flange Receptacle



PART #
QMA 9000-2001

Captive Contact

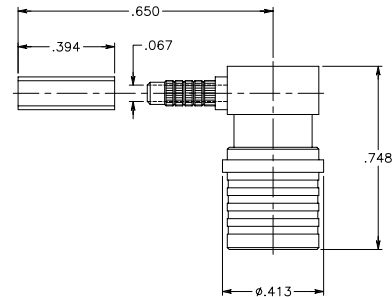
(QMA Jack) 2-Hole Flange Receptacle



PART #
QMA 9000-1002

Captive Contact

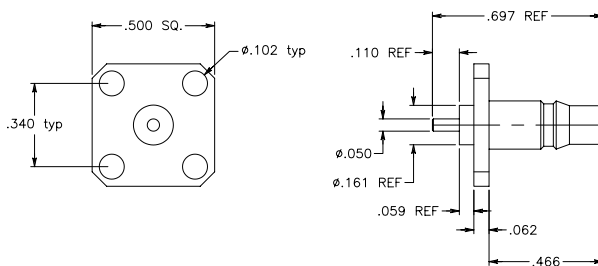
(QMA Plug) Right Angle Right Angle RG316



PART #
QMA 9000-2002

Captive Contact

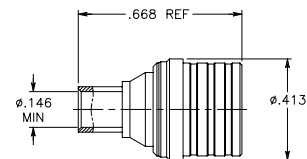
(QMA Jack) 4-Hole Flange Receptacle



PART #
QMA 9000-1003

Captive Contact

(QMA Plug) For .141 Semi-Rigid



PART #
QMA 9000-2003

Captive Contact