

GENERAL SPECIFICATIONS

PART NUMBER	FREQUENCY GHz	W/G SIZE DESIGN	DIM. -A-	DIM. -B-	DIM. -C-
WS-2S	1.7-2.6	WR430	7.5	5	8
WS-3S	2.6-3.95	WR284	7.5	3.75	5
WS-4S	3.3-4.9	WR229	7	3.5	4.75
WS-5S	3.95-5.85	WR187	6.5	3.25	4.5
WS-6S	4.9-7.05	WR159	6	3	4
WS-7S	5.85-8.2	WR137	6	3	4
WS-8S	7.05-10	WR112	4.2	2.1	3
WS-9S	8.2-12.4	WR90	4	2	2.75
WS-10S	10-15	WR75	3.75	1.87	2.5
WS-11S	12.4-18	WR62	3.5	1.75	2.37
WS-12S	15-22	WR51	3.1	1.5	2.25
WS-13S	18-26.5	WR42	2.2	1.1	1.5
WS-14S	22-33	WR34	2.2	1.1	1.5
WS-15S	26.5-40	WR28	2	1	2.5

PERFORMANCE SPECIFICATIONS

Coupling: 30dB, 40dB, or 50dB
 Nominal Coupling: +/- 0.5dB
 Frequency Sensitivity: +/- 1.00dB max.
 Directivity: 20dB min.
 VSWR Waveguide: 1.05 max.

Mechanical

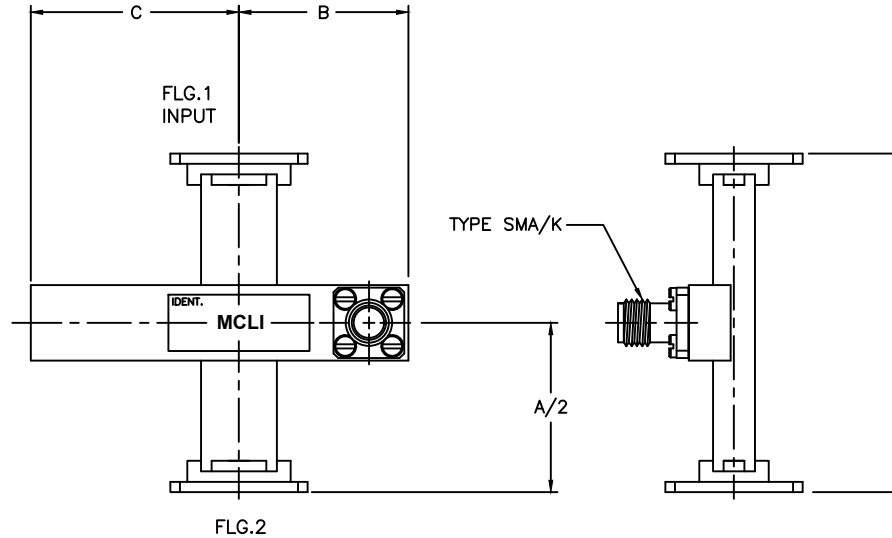
Construction: -A = Aluminum, -B = Brass-Copper
 Pressure: 30psi WR28 thru WR137, otherwise 10psi
 Flange Type: Multiple Type Available, See Table
 Finishing: Corrosion resistant 316 stainless steel epoxy coating

ORDERING INFORMATION

EXAMPLE PART NUMBER: WS-9S-A-6-6-30
 W/G SIZE (WR28 to WR430)
 MATERIAL (-A, -B)
 FLANGE 1 (Type)
 FLANGE 2 (Type)
 COUPLING (dB)

REVISIONS				
ZONE	REV	DESCRIPTION	Date	APPROVED

- F = FLANGE TYPES
- 1 = CPRG
 - 2 = CPRF
 - 3 = CMR STANDARD
 - 4 = CMR CLEAR
 - 5 = CMR TAP
 - 6 = UG-COVER
 - 7 = UG-CHOKE
 - 8 = COVER/GROOVE
 - 9 = PDR
 - 10 = UDR



MATERIAL:	
DRAWN: Paiboon luekhamhan APPROVED: T. Nguyen	DATE: 01-19-2012 DATE: 01-19-2012

MICROWAVE COMMUNICATIONS LABORATORIES INC. 7255 30TH AVE. N. SAINT PETERSBURG, FL 33710 TEL: (727) 344-6254 FAX: (727) 381-6116 http://WWW.MCLI.COM	SCALE: N/A
	SHEET: N/A
UNLESS OTHERWISE SPECIFIED: TOLERANCES IN (INCHES) OR [mm] (MILLIMETERS) FRACTIONS: ± 1/64 DECIMALS: ±.01 ±.005 ANGLE: ±1/2°	DRAWING TITLE: 2 PORTS CROSSGUIDE DIRECTIONAL COUPLER, SMA
PART NO. WS-2S to WS-15S	CAGE CODE: OD2L5 SIZE: A REV: N/A DWG NO.: 85978
THIRD ANGLE PROJECTION	DO NOT SCALE THE DRAWING