

Passband 1: 2500 to 2570 MHz

Diplexer (BP/BP)

Passband 1 Isolation: 100 dB

Passband 2: 2620 to 2690 MHz

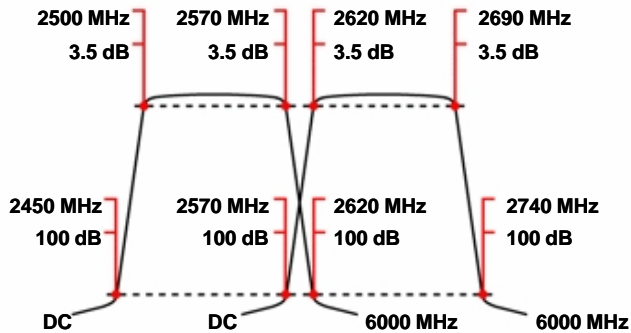
WDCGV12+12-2500-2570/2620-2690-100

Passband 2 Isolation: 100 dB

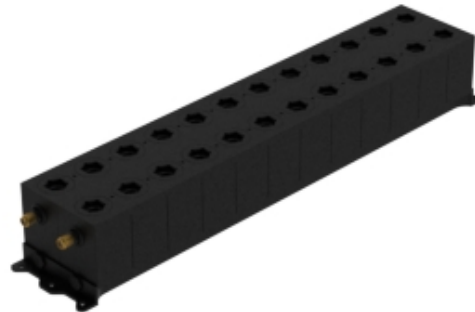
Specifications

	Band 1 (Bandpass)	Band 2 (Bandpass)
Passbands:	2500 to 2570 MHz	2620 to 2690 MHz
Passband Insertion Loss:	3.5 dB max.	3.5 dB max.
Passband Return Loss:	14 dB min.	14 dB min.
Stopbands:	DC-2450 & 2620-6000 MHz	DC-2570 & 2740-6000 MHz
Stopband Attenuation:	100 & 100 dB min.	100 & 100 dB min.
Operating Temperature:	15 °C to 45 °C	
Power Handling:	max. 50 W CW into a 2:1 VSWR (Please see our warranty in this regard)	
Dimensions (L x W x H):	305 x 60 x 49 mm (plus connectors and flanges)	
Approx. Weight:	2.1 kg	
Mounting Provision:	10 mm flanges on both ends with 3.3 mm holes	
Connector Common:	- Please choose -	
Connector Band 1:	- Please choose -	
Connector Band 2:	- Please choose -	

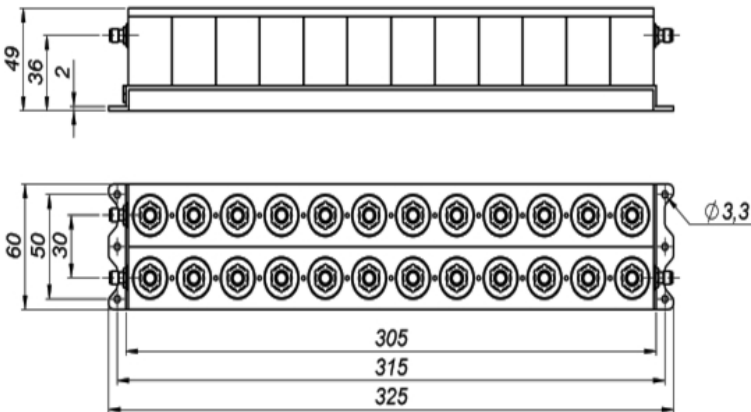
Typical Performance



12+12 Section Cavity Design



©2013 Wainwright Instruments. All rights reserved.



Euro Prices

(USD Prices will be quoted for US-based customers only)

1 - 4 pcs:	€ 2586
5 - 9 pcs:	€ 2392
10 - 24 pcs:	€ 2213

Delivery Terms

FCA Andechs (free carrier) according to **Incoterms 2010**
 In Deutschland liefern wir frachtfrei gemäß CPT **Incoterms 2010** (unversichert).
 Regarding payment terms and warranty see [Terms and Conditions](#).
Delivery time: normally 3 to 4 weeks - depending on quantity ordered and on our work load.

Customer is responsible for observing all applicable export laws in regard to filter application and location of end user



Wainwright Instruments GmbH
 www.wainwright-filters.com

Tel: +49 8152 918230
 Fax: +49 8152 918255
 info@wainwright-filters.com