

KR 2562 Bandpass Filter

General Description

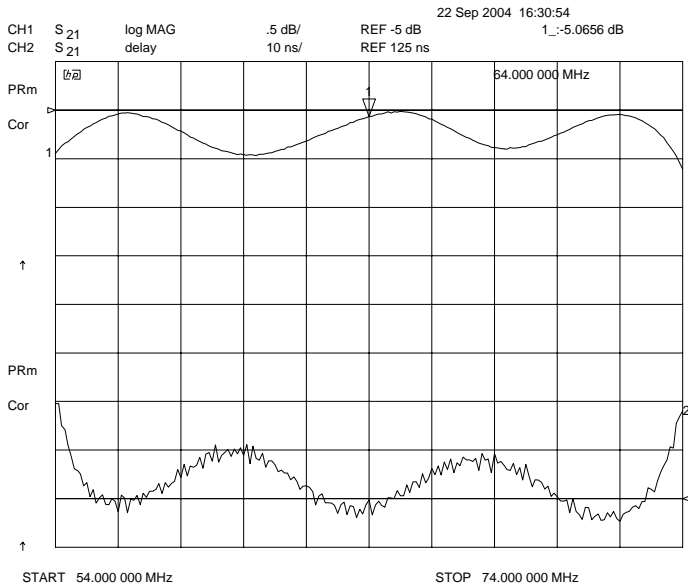
KR 2562 is a 64 MHz group delay equalized surface mount bandpass filter. Other center frequencies and bandwidths available. Please consult the factory.

Features

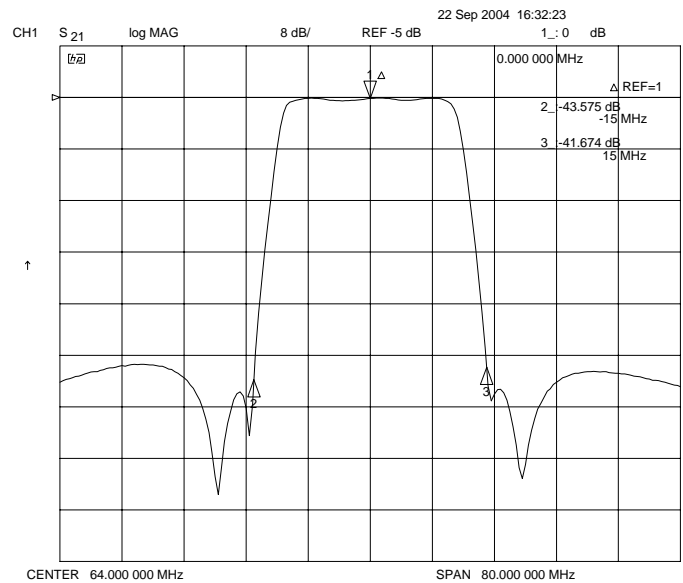
- Surface Mount Package
- Sharp Transition to Stopband
- >40 dB Stopband
- 50 Ω Source and Load

Typical Performance

Passband Amplitude & Group Delay
(0.5 dB/div & 10 nsec/div)



Overall Response
(8 dB/div)



KR Electronics, Inc.
91 Avenel Street
Avenel, NJ 07001

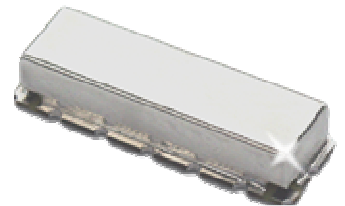
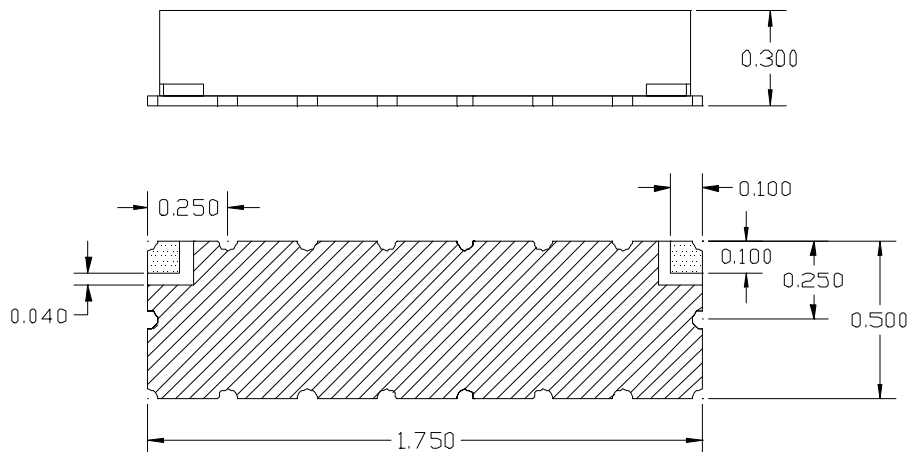
Web www.krfilters.com
 Email sales@krfilters.com
 Phone (732) 636-1900
 Fax (732) 636-1982

KR 2562 Bandpass

Specifications

Parameter	Specification
Filter type	Bandpass
Center Frequency	64 MHz
Insertion Loss	< 6 dB
Min 1 dB Bandwidth	20 MHz
Max 40 dB Bandwidth	30 MHz
Source and Load	50 Ω
Group Delay Ripple ± 8 MHz	< 30 nsec

Physical Dimensions



Notes:

1. Surface mount package — Metal cover, open frame
2. Dimensions in inches
3. Use SN60 or SN63 solder during installation
4. If boards are cleaned after installation, units must be completely dried to remove any entrapped moisture that will effect electrical performance