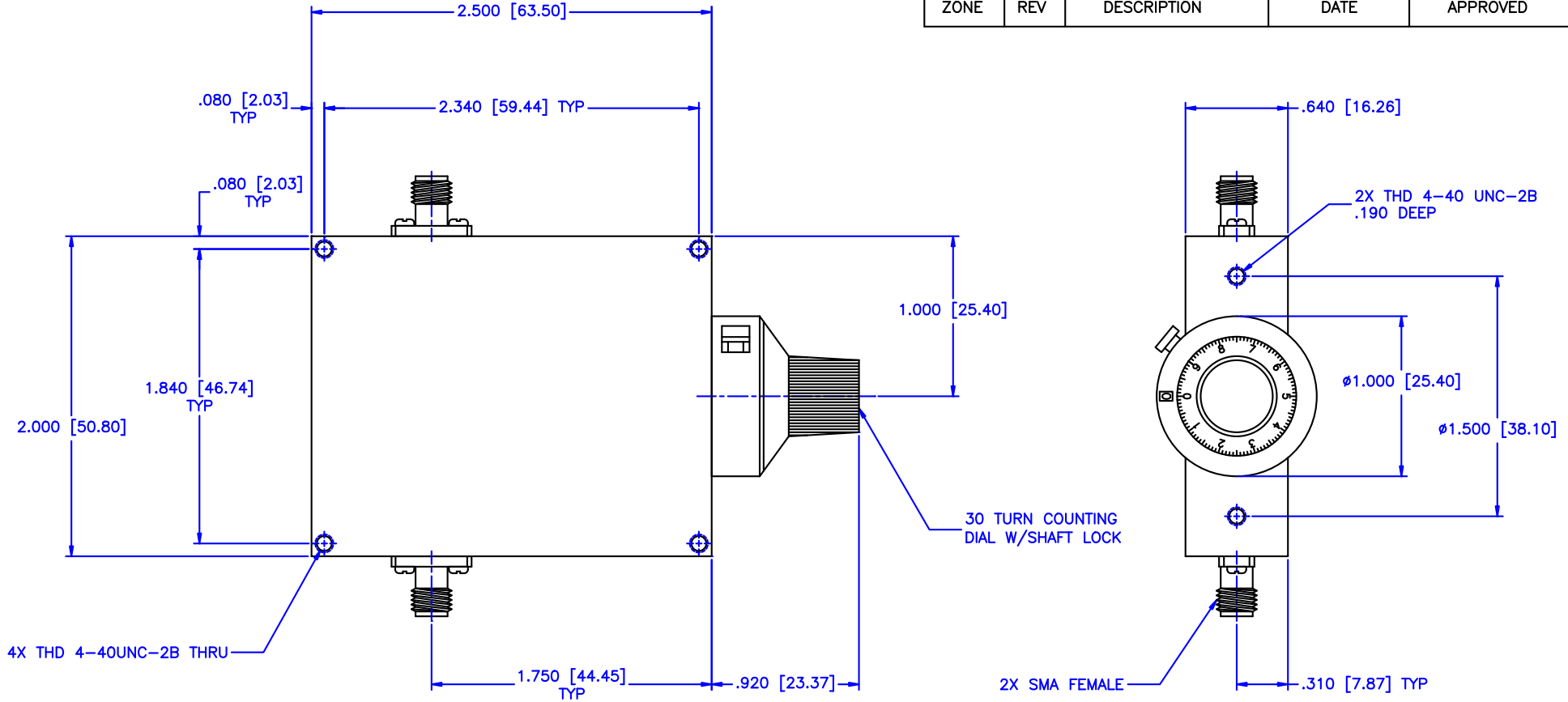


REVISIONS				
ZONE	REV	DESCRIPTION	DATE	APPROVED



**SPECIFICATION:**

Frequency Range: 2-4.2 GHz  
 Attenuation: 20dB  
 Insertion Loss: 0.5 Max.  
 VSWR: 1.50:1 Max.  
 RF Power: 7 W Average, 3kW Peak

**Environmental:**

Temperature range: -55°C to +110°C  
 Shock: 15 G's, 11mS, 1/2 sine  
 Vibration: 3 G's overall  
 Altitude: 40,000 ft. Survival  
 25,000ft Operating

MATERIAL:		<b>MCLI</b> MICROWAVE COMMUNICATIONS LABORATORIES INC. 7255 30TH AVE. N. SAINT PETERSBURG, FL 33710 TEL: (727) 344-6254 FAX: (727) 381-6116 http://WWW.MCLI.COM	SCALE:		N/A
UNLESS OTHERWISE SPECIFIED: TOLERANCES IN (INCHES) OR [mm] (MILLIMETERS) FRACTIONS: ± 1/64 DECIMALS: ±.01 ±.005 ANGLE: ±1/2°			DRAWING TITLE:		CONTINUOUSLY VARIABLE ATTENUATOR WITH DIAL
DRAWN: Paiboon Luekhamhan		DATE: 11-18-2001		PART NO. CVA5-20/D	
APPROVED: T. Nguyen		DATE: 11-18-2001		CAGE CODE: OD2L5	
THIRD ANGLE PROJECTION		SIZE: A		REV: N/A	
		DO NOT SCALE THE DRAWING		DWG NO. 85404	