

Specifications

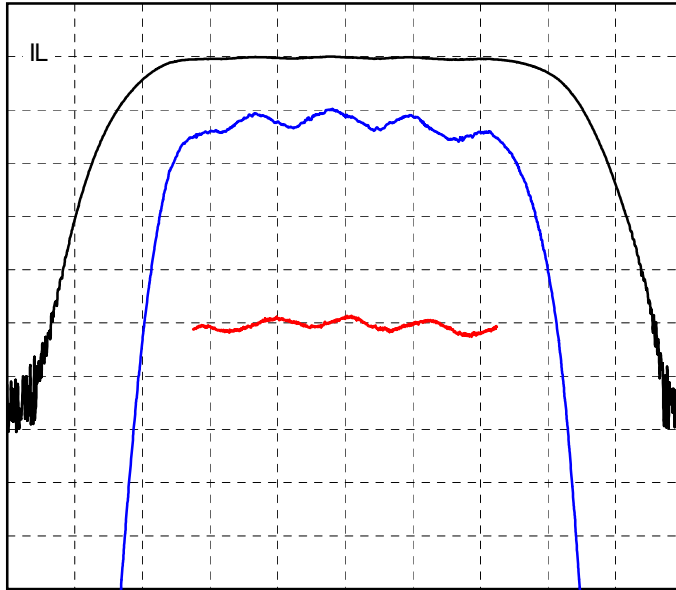
Parameter	Unit	Min	Typical	Max
Center Frequency (F0)	MHz		100	
Bandwidth (B)	MHz		30	
Delay (T0)	μsec	5.08	5.103	5.12
Insertion Loss (IL)	dB		25.1	26
Amplitude Ripple	dB p-p		0.6	0.8
Phase Ripple	deg p-p		4.3	6
Spurious for t-T0 >.9T0	dB		-59	-58
Substrate Material		YZ-LN		

Notes:

- Center Frequency (F0) and Bandwidth (B) are defined, not measured.
- Insertion Loss is the minimum loss for $|f-F0| < .5B$
- Ripple spec applies to $|f-F0| < .4B$, and is doubled for $.4B < |f-F0| < .5B$
- Specifications are at 22C only. Unit will operate undamaged from -54C to 125C with shifts $dF0 = -x \cdot F0$, $dT0 = x \cdot T0$, where $x = 94E-6 \cdot (\text{temperature} - 22C)$

Typical Performance

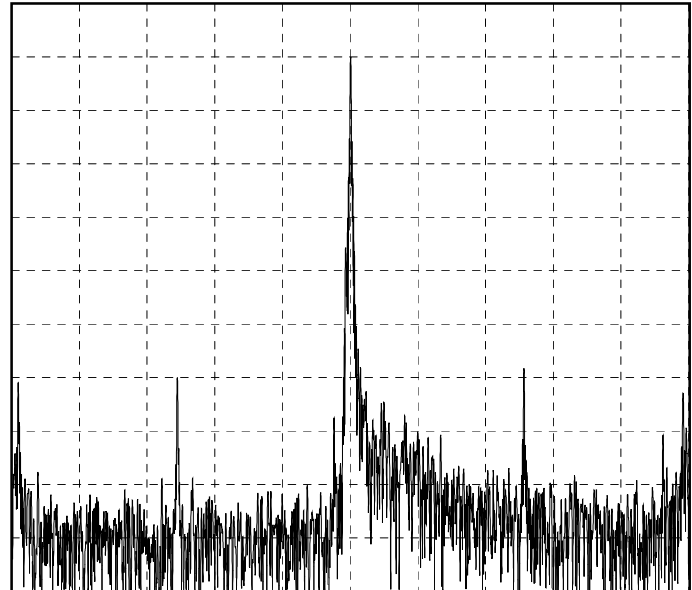
Frequency Response
(Best Fit Linear Phase Removed)



10 dB/div, 1 dB/div, 10 deg/div, 6 MHz/div

Impulse Response

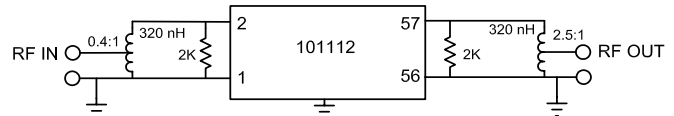
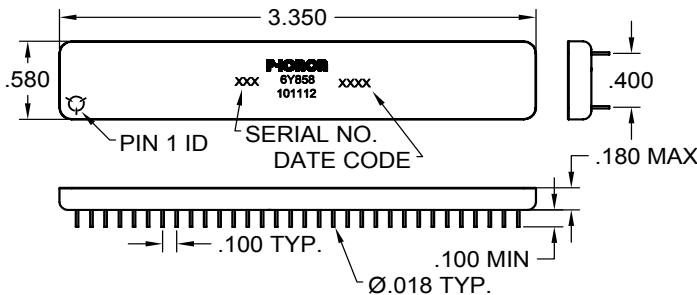
$FFT(\text{Frequency Response} \cdot \cos(0.5 \cdot \pi \cdot \min(1, \max(0, |f-F0| \cdot 2.0/35 - 1.0)))^2)$



10 dB/div, 2 us/div

Package Outline

Matching



Matched S-parameters available at www.phonon.com