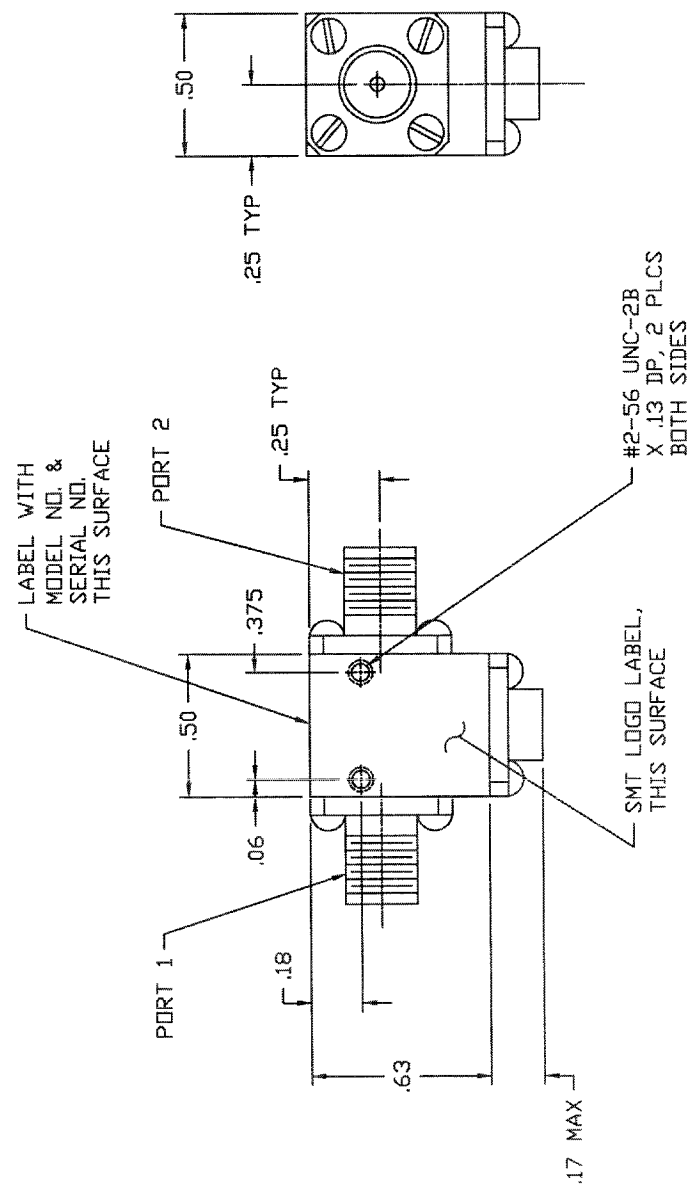


REVISIONS		
REV.	DESCRIPTION	DATE
NC	INITIAL RELEASE	
		APPROVED

SPECIFICATIONS

1. FREQUENCY RANGE.....25.0 TO 31.0 GHz
2. VSWR.....1.35:1 MAX
3. ISOLATION.....17 dB MAX
4. INSERTION LOSS.....0.7 dB MAX
5. TEMPERATURE:  
 OPERATING.....-20° TO +65°C  
 STORAGE.....-55° TO +100°C

CONNECTOR ORIENTATION			
DASH NO.	PORT 1	PORT 2	PORT 3
NONE	2.9mm FEMALE	2.9mm FEMALE	TERMINATION
-1	2.9mm MALE	2.9mm FEMALE	TERMINATION
-2	2.9mm FEMALE	2.9mm MALE	TERMINATION
-3	2.9mm MALE	2.9mm MALE	TERMINATION



NOTE: PART DRAWN IS SMI2531 NO DASH NO.

QTY	FSCM	PART OR IDENTIFYING NO.	NOMENCLATURE OR DESCRIPTION	MATERIAL SPECIFICATION
REQD NO.				

PARTS LIST		SIERRA MICROWAVE TECHNOLOGY	
FRACCTIONS DECIMALS ANGLES ±	DATE	OUTLINE FORM SMI2531-X	
XXX .02 ±	APPROVALS	SIZE	FSCM NO.
.XXXX .010	DRAWN	B	1CY63
	CHECKED	DWG. NO.	205-2226-001
	ISSUED	SCALE	SHEET
MATERIAL			
FINISH			
204--	-001	SMI2531-X	
NEXT ASSY	USED ON		
APPLICATION			