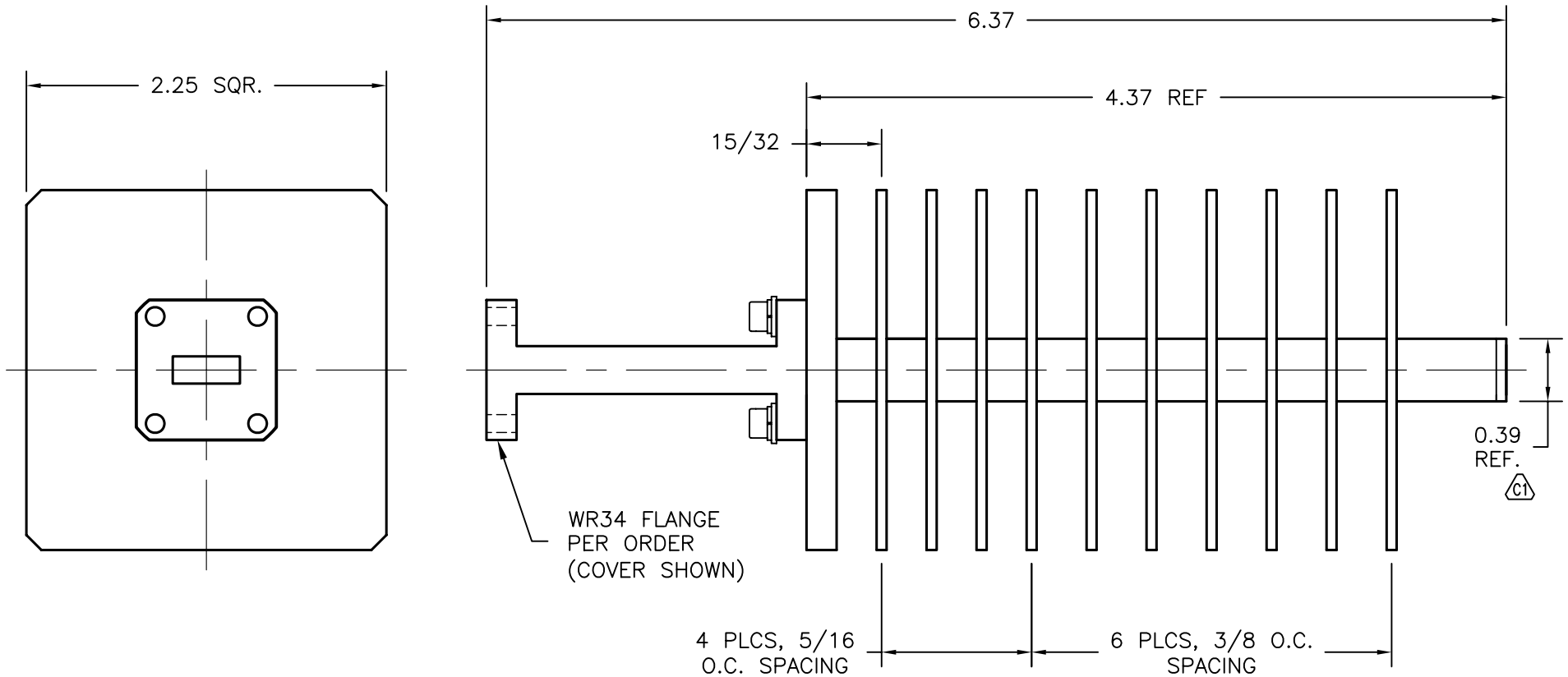


REV A	AUTH M.R.	DATE 11/05/09	INITIAL RELEASE
REV B	AUTH M.R.	DATE 2/12/10	ADDED FIN SPACING DIMS
REV C	AUTH M.R.	DATE 4/8/10	ADDED 0.39 REF. DIMENSION (C1)



PERFORMANCE SPECIFICATIONS

MODEL CODE: 34-760-FLANGE TYPE*
 WG SIZE: WR34 ALUM.
 FREQ. RANGE: 22-33 GHz
 POWER: 700W AVG.
 MAX. VSWR: 1.15 MAX.
 FLANGE TYPE: SEE TABLE

*ATM MODEL # DESIGNATION FOR COMMON FLANGE TYPES
6 = UG COVER
7 = UG CHOKE
8 = UG COVER GROOVE

THIRD ANGLE PROJECTION:		APPROVALS	DATE		ADVANCED TECHNICAL MATERIALS, INC. TEL: (631) 289-0363 FAX: (631) 289-0358 www.atmmicrowave.com		THE INFORMATION IN THIS DRAWING IS PROPRIETARY AND SHALL NOT BE USED OR DISCLOSED WITHOUT THE PRIOR WRITTEN CONSENT OF ATM, INC. DO NOT SCALE DWG.
UNLESS OTHERWISE NOTED, DIMENSIONS ARE IN INCHES, TOLERANCES ARE: FRACTIONS: ±1/64 ANGLES: ±1/2°		DRAWN M.R.	11/05/09		CAGE CODE 0R8N4		
BASIC DIMENSION		CHKD.	APRVD.	OUTLINE WR34 VHP TERMINATION		ATM DWG # 9957	REVISION C
UNDER 6"	DECIMALS 2 PLACE 3 PLACE ±.02 ±.005	MATERIAL ALUMINUM		SCALE 1 : 1	MODEL # 34-760-X	SHEET 1/1	
6" - 12"	±.03 ±.010	TREATMENT CHEM FILM					
OVER 12"	±.06 ±.015	FINISH HI-TEMP BLACK					