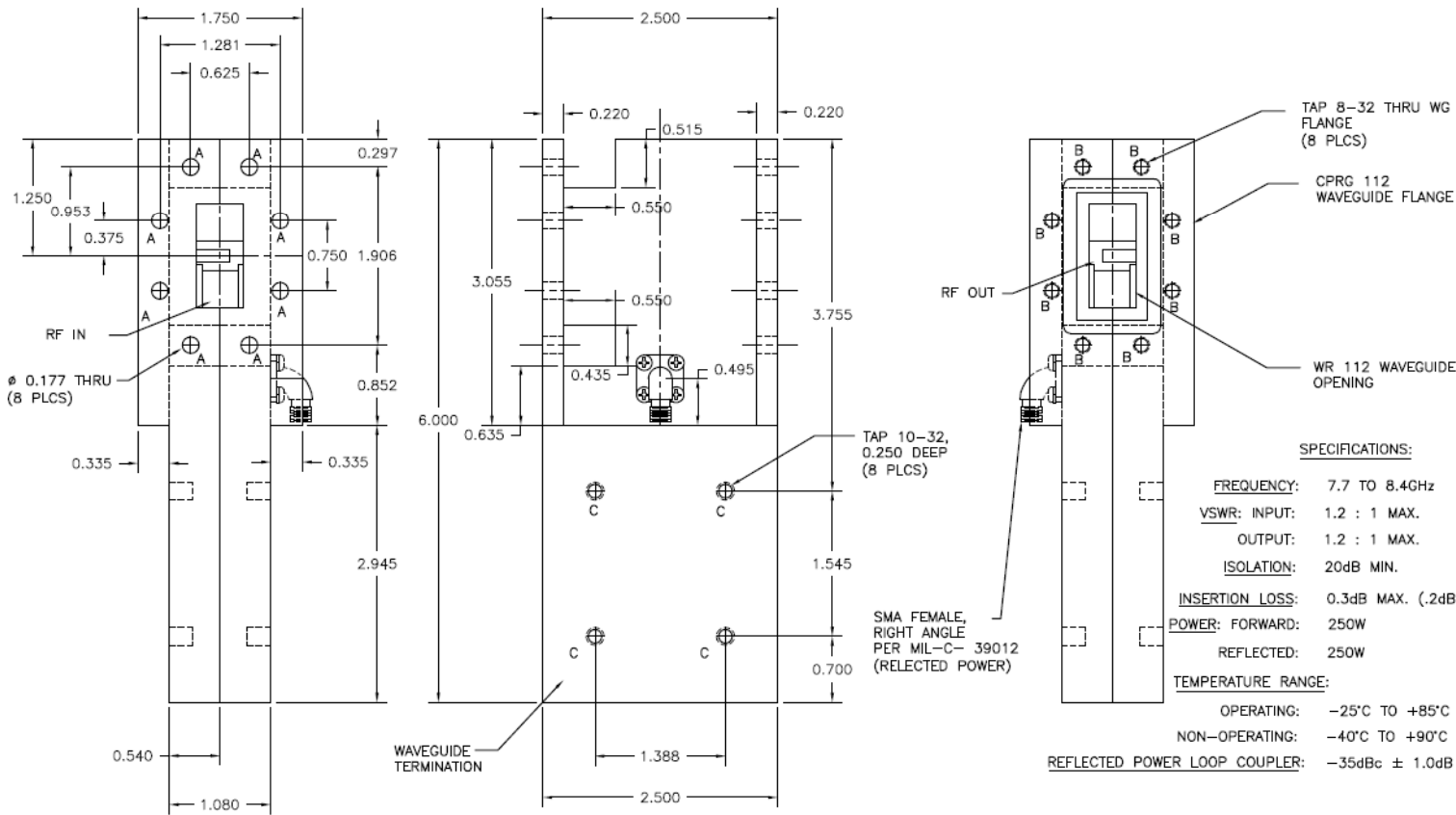


250W CW WAVEGUIDE WR112 CIRCULATOR --- RFW112A

2.0	Environment specifications	
2.1	Operation Temp.	-40°C~+85°C
2.2	Storage Temp.	-50°C~+125°C
2.3	Altitude	15000 ft
2.4	Vibration	10g rms (15 degree 2KHz)
2.5	Humidity	90% RH at 35c, 95%RH at 40 deg c
2.6	Shock	20G for 11msc

1.0	Mechanical Specifications	
1.1	Waveguide type	Rectangular Waveguide WR112
1.2	Flange type	CPRG, CPRF, COVER, CHOKE available
1.3	Flange Holes	Through or tapped holes
1.4	Basis-material	Aluminum
1.5	External Body Finish	NO PAINT OR BLUE PAINT



SPECIFICATIONS:

FREQUENCY:	7.7 TO 8.4GHz
VSWR: INPUT:	1.2 : 1 MAX.
OUTPUT:	1.2 : 1 MAX.
ISOLATION:	20dB MIN.
INSERTION LOSS:	0.3dB MAX. (.2dB TYP.)
POWER: FORWARD:	250W
REFLECTED:	250W
TEMPERATURE RANGE:	
OPERATING:	-25°C TO +85°C
NON-OPERATING:	-40°C TO +90°C
REFLECTED POWER LOOP COUPLER:	-35dBc \pm 1.0dB

PAGE 1 OF 1	DATE Jun 17 th 2009
PROPRIETARY INFORMATION THE INFORMATION CONTAINED IN THIS DOCUMENT IS THE PROPERTY OF RF-LAMBDA EXCEPT AS SPECIFICALLY AUTHORIZED IN WRITING BY RF-LAMBDA. THE HOLDER OF THIS DOCUMENT SHALL KEEP ALL INFORMATION CONTAINED HEREIN CONFIDENTIAL AND SHALL PROTECT SAME IN THE WHOLE OR IN PART FROM DISCLOSURE AND DISSEMINATION OF ALL THIRD PARTIES AND SHALL USE SAME FOR OPERATING AND MAINTENANCE PURPOSES ONLY	DESIGN RFPFC
	RF-LAMBDA RFPFC
	CAD MODEL REVISION 02
	ASSEMBLY REVISION VS2
	ASSEMBLY NAME RFLVR42
	DRAWING NUMBER D02-3
www.rflambda.com	
RF-LAMBDA	SIZE LT SHEETS 1 OF 1